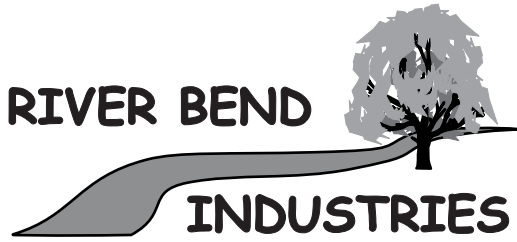
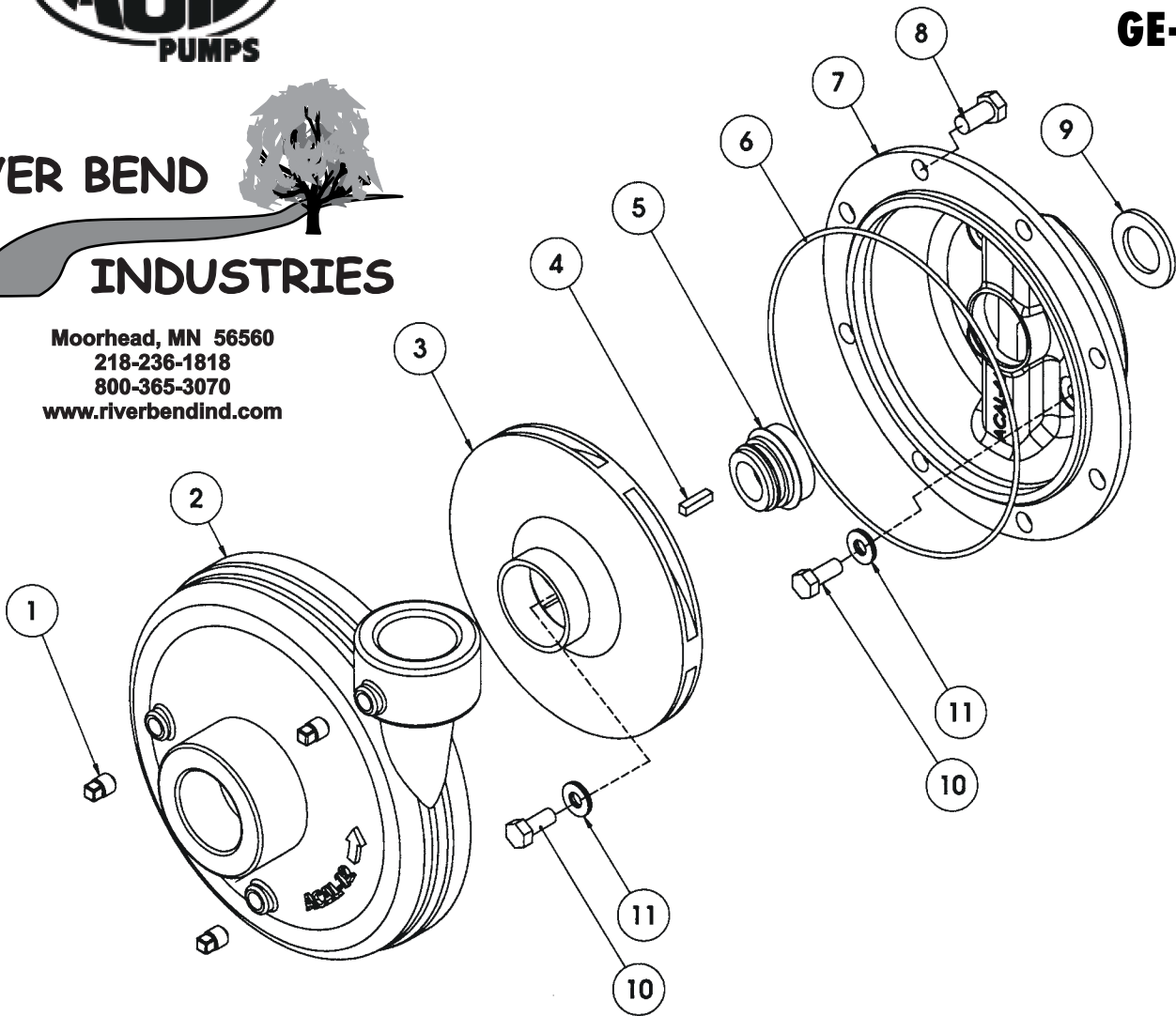




GE-660



Moorhead, MN 56560
 218-236-1818
 800-365-3070
 www.riverbendind.com



REF. #	PART NUMBER	EDP #	DESCRIPTION	REQ.
1	BAC-53	41110	Pipe plug, 1/8" NPT	3
1	41120	41120	Pipe plug, 1/8" NPT Stainless steel (optional)	3
2	ACAL-12	30161	Volute, 1 1/2" x 1 1/4", clockwise rotation	1
3	ACAL-28-660	30171	Impeller, cast iron, 3/4" keyed shaft	1
4	41081	41081	Key, Impeller, 3/16" x 3/16" x 3/4"	1
5*	BAC-7-660V	30225	Seal, Type 6A-3/4, carbon/ceramic/Viton	1
5+	BAC-7SC-660V	30226	Seal, Type 6A-3/4, silicon carbide/Viton	1
6*+	BAC-4-150	40015	O-Ring, volute seal	1
7	ACAL-66	30186	Bracket, GE-660 keyed shaft	1
8	40950	40950	Cap screw, 3/8" NC x 3/4" hex head	8
8	40930	40930	Cap screw, 3/8" NC x 3/4" stainless steel (optional)	8
9	GE-54-660	42222	Slinger	1
10	GE-60-SS	42235	Cap Screw, 5/16" NF x 3/4" stainless steel	5
11*+	30028	30028	Washer, sealing, 5/16" ID	5
#	42062	42062	Engine, 5.5 HP Honda, Pull Start (GX160UT1QX2)	1
#	42064	42064	Engine, 5.5 HP Honda, electric start, (GX160K1QXE2)	1
*	RK-GE-660	61162	Repair Kit	-
+	RK-GESC-660	61167	Repair Kit	-