

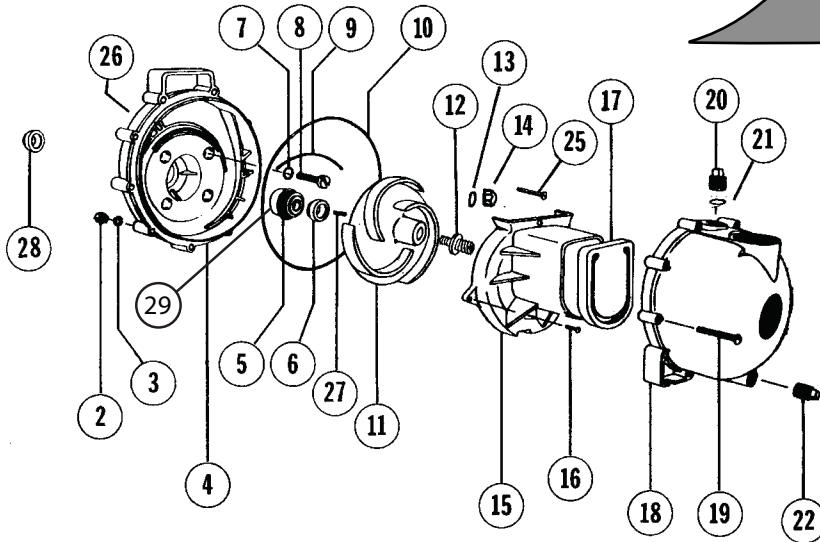
# Banjo 1-1/2" and 2" Poly Pump OLD STYLE

## RIVER BEND



## INDUSTRIES

Moorhead, MN 56560  
 218-236-1818  
 800-365-3070  
[www.riverbendind.com](http://www.riverbendind.com)



### POLY PUMP REPAIR PARTS LIST FOR PUMPS MANUFACTURED PRIOR TO SEPT. 1996

REF. NO.	DESCRIPTION	PER PUMP	PART	
			1 1/2"	2"
2	Body Nuts	10	V07019	V07019
3	Lock Washer	10	V07018	V07018
4	Rear Bracket	1	NLA	NLA
5&6	Seal Assembly*+	1	12713	12713
7	O-Ring for Screw Heads*+	4	12717	12717
8	Bracket Screws	4	12715	12715
9	O-Ring Segment*+	1	12754	12754
10	Body O-Ring*+	1	12719A	12719A
11	Impeller+	1	NLA	NLA
12	Impeller Stud	1	12765	12765
13	O-Ring Acorn Nut*+	1	12774V	12774V
14	Acorn Nut	1	12775	12775
15	Volute	1	NLA	NLA
16	Volute Screws	2	12725	12725
17	Check Valve+	1	12705	12705
18	Body	1	12711A	12712A
19	Body Screws	10	12720	12720
20	Prime Plug	1	12777	12777
21	O-Ring Prime Plug*+	1	12722	12722
22	Drain Plug	1	12723	12723
25	Upper Volute Screw	1	12900	12900
26	1/4" S.S. Washer	4	12901	12901
27	Impeller Key	1	12902	12902
28	Slinger O-Ring*+	3	12722	12722
29	Sea D-Ring*+	1	12710	12710
N/S	Complete Pedestal Assembly	1	12882A	12882A
	Pump Repair Kit (Consists Of Items Marked With +)	1	12000	12000
	Pump Seal/O-Ring Kit (Consists Of Items Marked With *)	1	12999	12999

NLA - No Longer Available