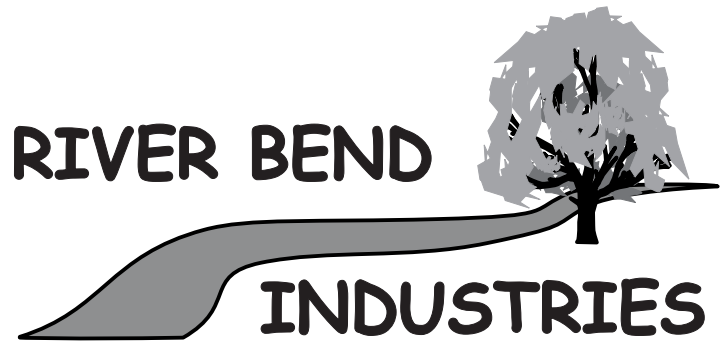
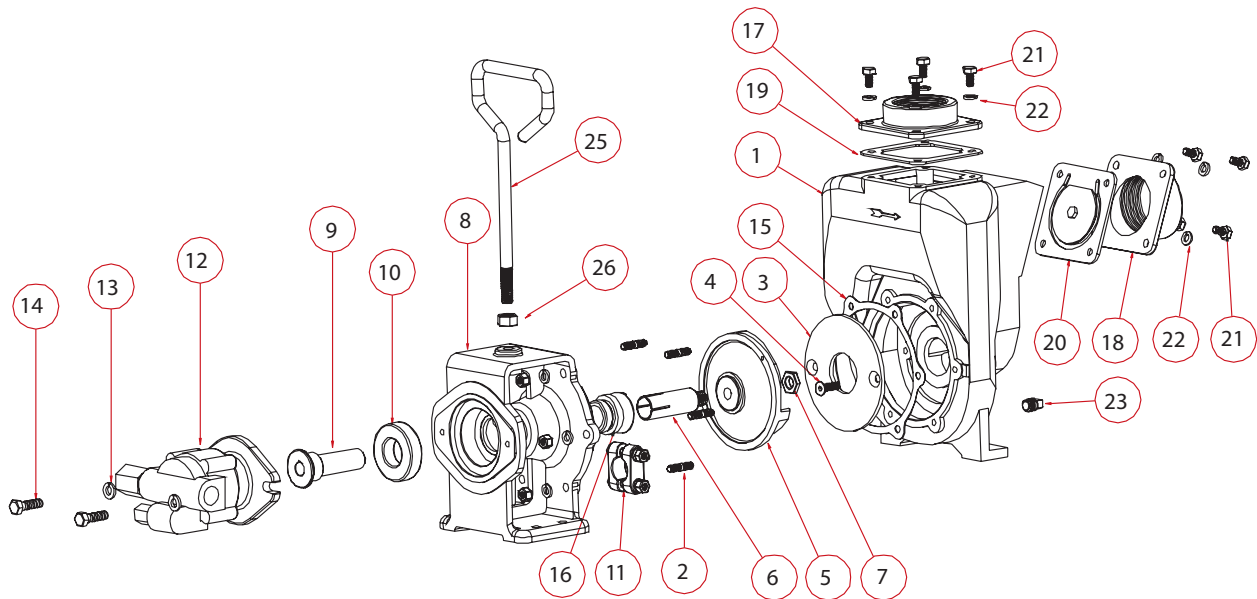


Banjo 1-1/2" and 2" Hydraulic Cast Pump



Moorhead, MN 56560
218-236-1818
800-365-3070
www.riverbendind.com



REPLACEMENT PARTS 1 1/2" & 2" CAST IRON HYDRAULIC PUMPS									
REF. NO	PART NO.	DESCRIPTION	QTY PER PUMP		REF. NO	PART NO.	DESCRIPTION	QTY PER PUMP	
1	17026	Pump Housing	1		16	17028	Seal Assy. (EPDM)	1(1 Per Pump)	
2	17042	Pump Housing Stud	6		16	17035*	Seal Assy. FKM (viton type)	1(1 Per Pump)	
3	*17011	Wear Plate	1		16	17035SD	Severe Duty Seal	1(1 Per Pump)	
4	17130	Capscrew 5/16" - 18 x 1"	2		17	17000	Flange-Outlet 2"	1 (2" Only)	
5	*17008	Impeller - 5" (Standard)	1		17	17001	Flange-Outlet 1 1/2"	1 (1 1/2" Only)	
6	17007	Sleeve Drive 7/8" for hydraulic motor	(1 Per Pump)		18	17002	Flange-Inlet 20° 2"	1 (2" Only)	
7	17009B	Nut, Hex 5/8" - 18 UNF	1		18	17003	Flange-Inlet 20° 1 1/2"	1 (1 1/2" Only)	
8	17049A	2" Cast Iron Hydraulic Adapter	1		19	17013	EPDM Gasket	1	
9	17055A	2" Cast Iron Hydraulic Adapter Shaft	1		20	17016	Gasket-Check Valve Assy.	1	
10	17056	SKF 6206-2RS1 Bearing	1		21	17019	Capscrew 5/16" - 18 x 3/4"	8	
11	17024	7/8" Clamp, no key	1		22	V10118	5/16" Split Lockwasher	14	
12	HY1013	MGG@0 025BC1D3 Hyd.Motor Assy.	1		23	17032	1/4" Drain Plug	1 (Not Shown)	
13	V20018	3/8" Lockwasher	2		24	V10119	5/16" - 18 Hex Nut	6	
14	18010SS	3/8" - 16 x 1.25" HHCS	2		25	15022	Handle	1	
15	*17018	Gasket Adapter	1		26	17010	Hex Nut 1/2" - 13UNF-RH	1	
					N/S	17100	Pump Repair Kit (1 1/2" & 2") (Consists of items marked *)	1	