

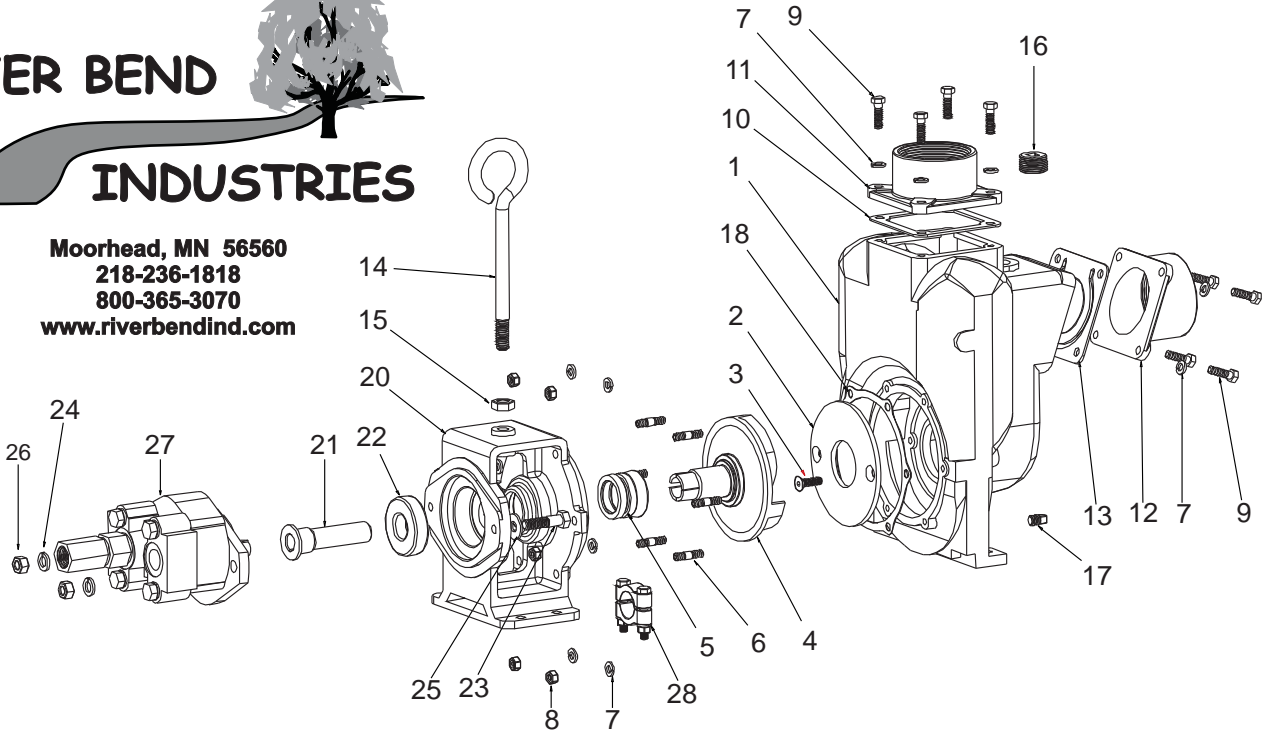
Banjo 3" Cast Iron Hydraulic Driven

RIVER BEND



INDUSTRIES

Moorhead, MN 56560
218-236-1818
800-365-3070
www.riverbendind.com



REPLACEMENT PARTS 3" CAST IRON HYDRAULIC PUMPS

| REF. NO. | PART NO. | DESCRIPTION PER PUMP | QTY. |
|----------|----------|----------------------------------|------|
| 1 | 18001 | Pump Housing | 1 |
| 2* | 18004 | Wear Plate | 1 |
| 3* | 18106 | 3/8" - 16 x 1.25" HHCS | 2 |
| 4* | 18023 | Impeller & Drive Shaft | 1 |
| 5* | 18025 | Mechanical Seal FKM (viton type) | 1 |
| 5 | 18025SD | Severe Duty Seal | 1 |
| 6 | 18218 | Pump Housing Stud | 6 |
| 7 | V20018 | 3/8" Split Lockwasher | 14 |
| 8 | V20019 | 3/8" - 24 Hex Nut | 6 |
| 9 | 18010SS | 3/8" - 16 x 1.25" HHCS | 8 |
| 10 | 18009 | Outlet Gasket EPDM | 1 |
| 11 | 18008 | Outlet Flange | 1 |
| 12 | 18012 | 3" Inlet Flange | 1 |
| 13 | 18013 | 3" Inlet/Check Gasket EPDM | 1 |
| 14 | 18033 | Pump Handle 5/8" - 11 Thread | 1 |

| REF. NO. | PART NO. | DESCRIPTION PER PUMP | QTY. |
|----------|----------|--|------|
| 15 | 18034 | 5/8" - 11 Hex Nut | 1 |
| 16 | 18002 | 1" NPT Plug | 1 |
| 17 | 18003 | 1/2" NPT Plug | 1 |
| 18* | 18021 | 3" Pump Adapter Gasket | 1 |
| 20 | 18049 | Hydraulic Motor Adapter | 1 |
| 21 | 18055 | Hydraulic Adapter Shaft | 1 |
| 22 | 18502 | Bearing SKF 66306-2RS1/C3 | 1 |
| 23 | 18056 | 1/2" - 13 x 2" HHCS | 2 |
| 24 | 18058 | 1/2" Split Washer | 2 |
| 25 | 18059 | 1/2" Flat Washer | 2 |
| 26 | 17010 | 1/2" - 13 Hex Nut | 2 |
| 27 | HY1012 | UM16-45A-HX Hydraulic Motor Assy | 1 |
| 28 | 18029 | 3" Clamp Assembly, Unkeyed | 1 |
| N/S | 18100 | Pump Repair Kit (3") (Consists of items marked *) | 1 |
| N/S | HY-1001 | Hydraulic Motor Seal Kit, Cast Pump Model Only | |

REPLACEMENT PARTS 3" HYDRAULIC ADAPTER

| REF. NO. | PART NO. | DESCRIPTION PER PUMP | QTY. |
|----------|----------|-------------------------------------|------|
| 1 | 18049 | 3" C-Flange Hydraulic Motor Adapter | 1 |
| 2 | 18021 | Gasket Adapter | 1 |
| 3 | 18025 | Seal Assembly | 1 |
| 4 | 18502 | Bearing SKF 66306-2RS1/C3 | 1 |
| 5 | 18055 | Hydraulic Shaft Sleeve Adapter | 1 |
| 6 | HY1012 | Tyrone UM16 Hydraulic Motor | 1 |
| 7 | 18059 | 1/2" Flat Washer | 2 |
| 8 | 18058 | 1/2" Split Lock Washer | 2 |
| 9 | 18056 | 1/2" - 13" x 2" HHCS Bolt | 2 |
| 10 | 17010 | 1/2" - 13" Full Hex Nut | 2 |
| 11 | 18600 | Hydraulic Motor Adapter Assy. | 1 |

