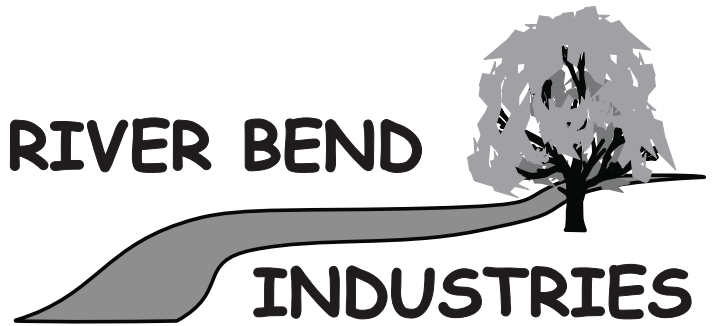


Banjo 3" Poly Hydraulic Pump

RIVER BEND



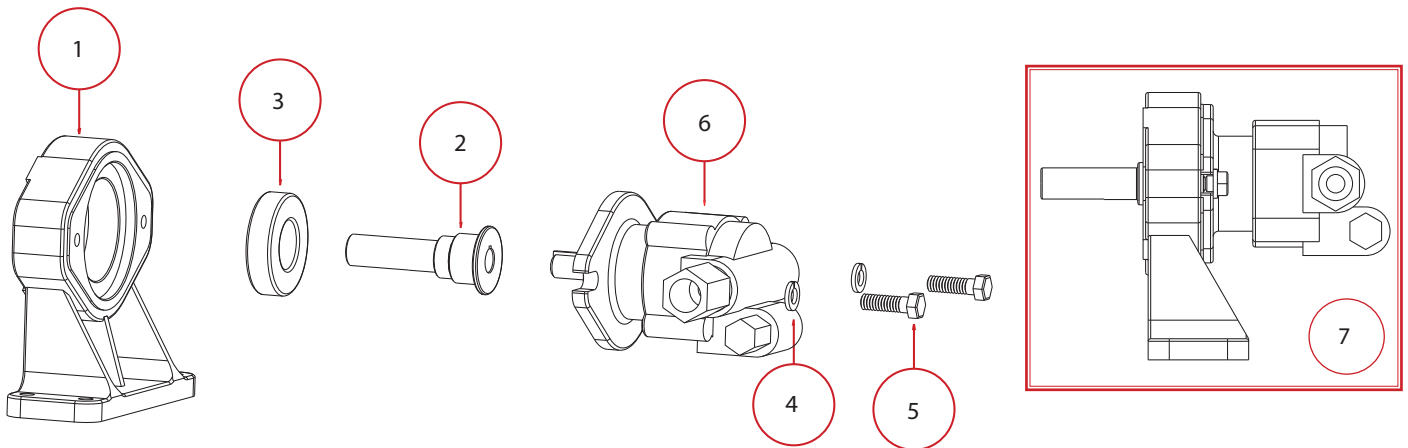
Moorhead, MN 56560

218-236-1818

800-365-3070

www.riverbendind.com

Click Here For Pump Breakdown



FOR HYDRAULIC UNITS MANUFACTURED AFTER JANUARY 25, 2002

REPLACEMENT PARTS 3" HYDRAULIC ADAPTER			
REF. NO.	PART NO.	DESCRIPTION	QTY. PER PUMP
1	12049B	Hydraulic Pedestal Housing	1
2	12055B	Adapter Shaft	1
3	17056	Bearing	1
4	V20018	3/8" Lockwasher	2
5	18010SS	3/8" - 16 x1.25" HHCS	2
6	HY1013	Gresen Hydraulic Motor	2
7	12600B	Complete Hydraulic Assembly	1
N/S	HY-1003	Hydraulic Motor Seal Kit, Poly Pump Model Only	