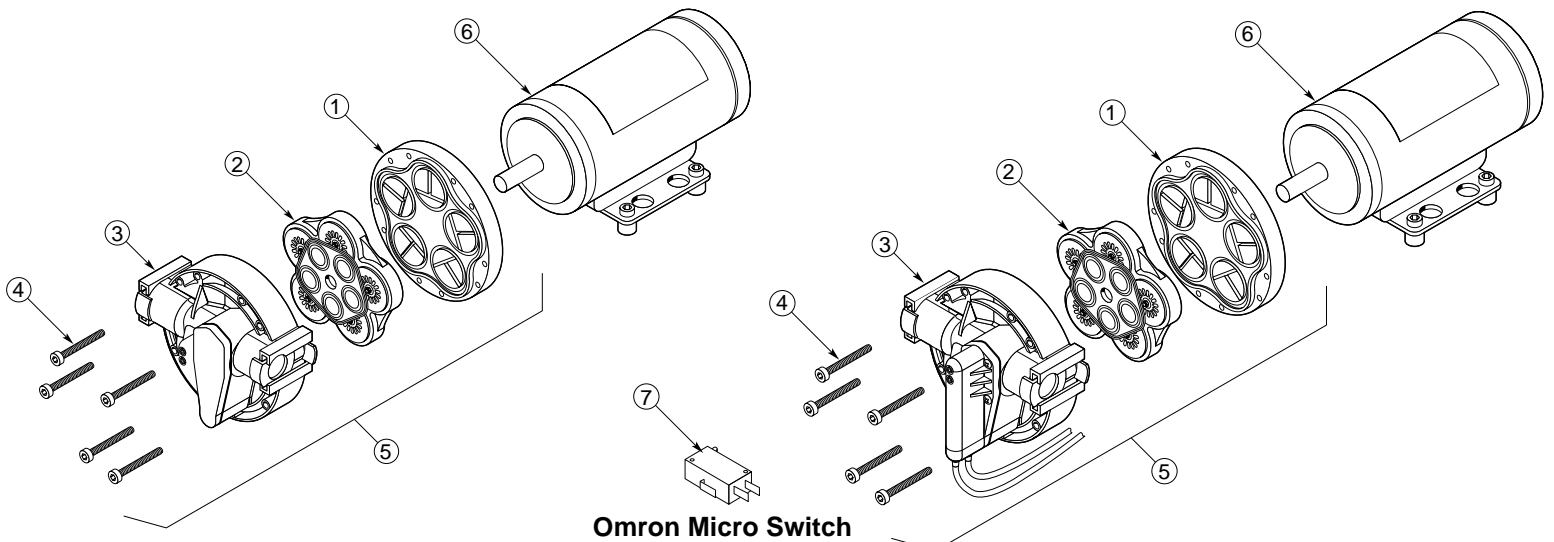


PowerFlow Models 5800/5900/FatBoy Series

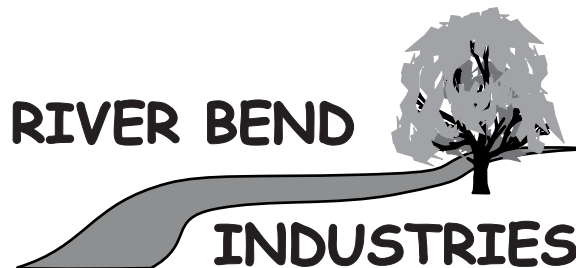


Bypass Models

Demand Models

| Ref No. | Part No. | Description | Qty. |
|---------|---------------|---|------|
| 1 | LHA-5510-1E77 | Lower Housing (5830, 5836, 5930, 5936) | 1 |
| | LHA-5512-1E77 | Lower Housing (5840, 5940) | 1 |
| | LHA-5513-1E77 | Lower Housing (5850, 5950) | 1 |
| 2 | VHA-5513-1E77 | Valve Assembly (All) | 1 |
| 3 | UHA-5513-2E77 | 5800 with Bypass Threaded | 1 |
| | UHA-5503-2E77 | 5900 with Bypass Quick Attach | 1 |
| 4 | MB-5500-1 | Mounting Bolt | 4 |
| 5 | 5510-2X77 | Complete Pump Heads 5830/5836 Bypass with Threaded Ports | 1 |
| | 5512-2X77 | 5840 Bypass with Threaded Ports | 1 |
| | 5513-2X77 | 5850 Bypass with Threaded Ports | 1 |
| | 5500-2X77 | 5930/5936 Bypass with Quick Attach | 1 |
| | 5502-2X77 | 5940 Bypass with Quick Attach | 1 |
| | 5503-2X77 | 5950 Bypass with Quick Attach | 1 |
| 6 | M70-563-MO | 5800/5900 12VDC with Bypass | 1 |
| | M70-565-BO | 5800/5900 115 VAC Lead Wires, Bypass | 1 |
| | M70-568-JO | 5800/5900 115 VAC with Plug | 1 |

| Ref No. | Part No. | Description | Qty. |
|---------|---------------|--|------|
| 1 | LHA-5510-1E77 | Lower Housing (5830, 5836, 5930, 5936) | 1 |
| | LHA-5512-1E77 | Lower Housing (5840, 5940) | 1 |
| | LHA-5513-1E77 | Lower Housing (5850, 5950) | 1 |
| 2 | VHA-5513-1E77 | Valve Assembly (All) | 1 |
| 3 | UHA-5513-1E77 | 5800 with Pressure Switch Threaded | 1 |
| | UHA-5503-1E77 | 5900 with Pressure Switch Quick Attach | 1 |
| 4 | MB-5500-1 | Mounting Bolt | 4 |
| 5 | 5510-1X77 | Complete Pump Heads 5830/5836 Pressure Switch with Threaded Ports | 1 |
| | 5512-1X77 | 5840 Pressure Switch with Threaded Ports | 1 |
| | 5513-1X77 | 5850 Pressure Switch with Threaded Ports | 1 |
| | 5500-1X77 | 5930/5936 Bypass with Quick Attach | 1 |
| | 5502-1X77 | 5940 Pressure Switch with Quick Attach | 1 |
| | 5503-1X77 | 5950 Pressure Switch with Quick Attach | 1 |
| 6 | M12-58A | 5800/5900 12VDC, Demand, w/No Connector, No Switch | 1 |
| | M12-58B | 5800/5900 12VDC, Demand, w/Connector, Switch | 1 |
| | M70-568-JO | 5800/5900 115 VAC, Demand, Lead Wires | 1 |
| | S-5800/5900 | Switch Only V-15-2C26-K | 1 |



Moorhead, MN 56560
218-236-1818
800-365-3070
www.riverbendind.com

PowerFLO™ 5900/FatBoy Series Quick Attach Fittings

| Item Number | Size | Fitting Type | Material | Qty. |
|-------------|---------------|-------------------------------|----------|------|
| 5DFA38 | 3/4"QA x 3/8" | HB Straight Fitting w/ O-Ring | Nylon | 1 |
| 5DFA12 | 3/4"QA x 1/2" | HB Straight Fitting w/ O-Ring | Nylon | 1 |
| 5DFA34 | 3/4"QA x 3/4" | HB Straight Fitting w/ O-Ring | Nylon | 1 |
| 5DFE38 | 3/4"QA x 3/8" | HB Elbow Fitting w/ O-Ring | Nylon | 1 |
| 5DFE12 | 3/4"QA x 1/2" | HB Elbow Fitting w/ O-Ring | Nylon | 1 |
| 5DFE34 | 3/4"QA x 3/4" | HB Elbow Fitting w/ O-Ring | Nylon | 1 |



5DFA38



5DFE38



5DFA12



5DFE12