

*(Read carefully before installation and operation)*

## GENERAL

Delavan roller pumps are available with a variety of options, such as a choice of roller numbers (4-roller, 5-roller, 6-roller, 7-roller, 8-roller), seal materials (Viton-A or Teflon), and a direction of rotation. Also, Ni-Resist and Diamond Cast pump bodies are available on all Delavan roller pumps. Stainless steel shaft is standard on all models.

## 4-ROLLER SIDE PORT PUMP

### Series 4400

#### FEATURES:

- Max. flow: 9.2 gpm at 2600 rpm
- Max. fluid temperature: 140°F/60°C
- Port size: 3/4" NPT
- Shaft size: 5/8" Solid or 1/2" Hollow
- Cast iron, Ni-Resist or Diamond Series housing
- Pump shaft rotation: CW Standard/CCW Optional
- Weight: 5 lbs.
- Rollers: Ultra Rollers standard
- Shaft Seals: Viton standard
- Available PTO adapters



## 5-ROLLER SIDE PORT PUMP

### Series 5500

#### FEATURES:

- Max. flow: 46.5 gpm at 1000 rpm
- Max. fluid temperature: 140°F/60°C
- Port size: 1" NPT
- Shaft size: 15/16" Solid Shaft
- Cast iron, Ni-Resist or Diamond Series housing
- Pump shaft rotation: CCW (CW available)
- Weight: 19 lbs.
- Rollers: Ultra Rollers standard
- Shaft Seals: Viton standard
- Available PTO adapters



## 6-ROLLER SIDE PORT PUMP

### Series 6600

#### FEATURES:

- Max. flow: 19.6 gpm at 1000 rpm
- Max. fluid temperature: 140°F/60°C
- Port size: 3/4" NPT
- Shaft size: 5/8" Solid
- Cast iron, Ni-Resist or Diamond Series housing
- Pump shaft rotation: CCW (CW available)
- Weight: 9 lbs.
- Rollers: Ultra Rollers standard
- Shaft Seals: Viton standard
- Available PTO adapters



## 6-ROLLER BACK PORT PUMP

### Series 6601

#### FEATURES:

- Max. flow: 19.6 gpm at 1000 rpm
- Max. fluid temperature: 140°F/60°C
- Port size: 3/4" NPT
- Shaft size: 5/8" Solid
- Cast iron, Ni-Resist or Diamond Series housing
- Pump shaft rotation: CCW (CW available)
- Weight: 9 lbs.
- Rollers: Ultra Rollers standard
- Shaft Seals: Viton standard
- Available PTO adapters
- Rear Ports



## 7-ROLLER SIDE PORT PUMP

### Series 7000

#### FEATURES:

- Max. flow: 22.5 gpm at 850 rpm max.
- Max. fluid temperature: 140°F/60°C
- Port size: 3/4" NPT
- Shaft size: 15/16" Solid
- Cast iron, Ni-Resist or Diamond Series housing
- Pump shaft rotation: CCW (CW available)
- Weight: 14 lbs.
- Rollers: Ultra Rollers standard
- Shaft Seals: Viton standard
- Available PTO adapters



## 8-ROLLER SIDE PORT PUMP

### Series 8800

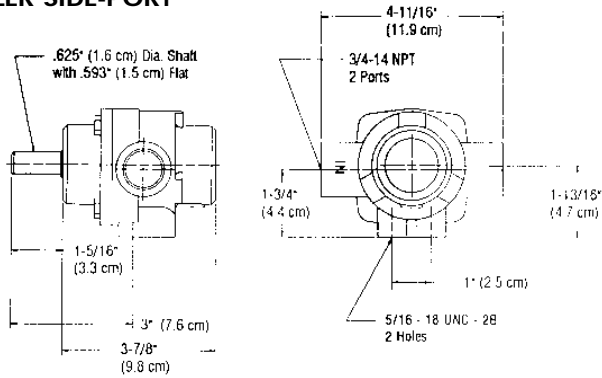
#### FEATURES:

- Max. flow: 24 gpm at 1000 rpm
- Max. fluid temperature: 140°F/60°C
- Port size: 3/4" NPT
- Shaft size: 15/16" Solid
- Cast iron, Ni-Resist or Diamond Series housing
- Pump shaft rotation: CCW (CW available)
- Weight: 14 lbs.
- Rollers: Ultra Rollers standard
- Shaft Seals: Viton seals standard
- Available PTO adapters

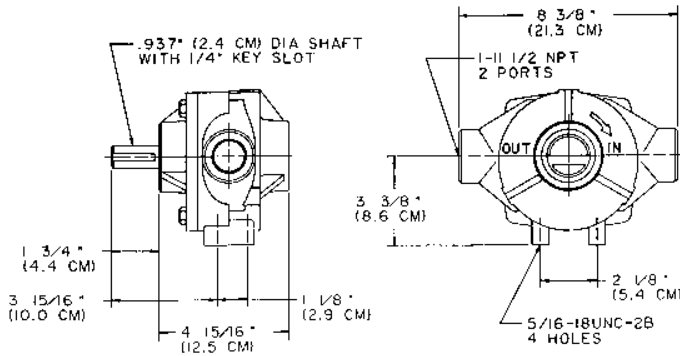


Figure 2. Dimensional Drawings

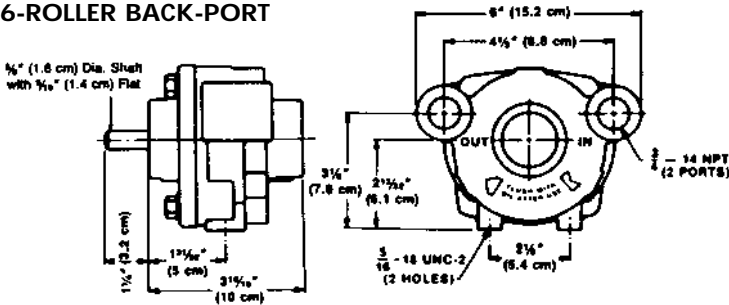
4-ROLLER SIDE-PORT



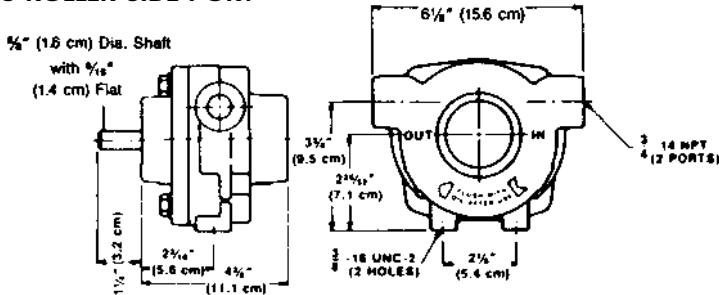
5-ROLLER SIDE-PORT



6-ROLLER BACK-PORT



6-ROLLER SIDE-PORT



Flow Rates and Horsepower Requirements for 4-Roller Pump 4400 Series (44-5111)

PRESSURE	1800 RPM GPM (HP)	2200 RPM GPM (HP)	2600 RPM GPM (HP)
0 psig	6.5 (.12)	7.7 (.15)	9.2 (.19)
25 psig	5.4 (.24)	6.7 (.31)	8.4 (.36)
50 psig	4.7 (.35)	5.9 (.42)	7.7 (.54)
75 psig	4.0 (.43)	5.3 (.54)	7.1 (.70)
100 psig	3.5 (.50)	4.8 (.65)	6.7 (.84)
125 psig	3.0 (.55)	4.3 (.75)	6.3 (1.02)
150 psig	2.6 (.60)	3.9 (.85)	5.9 (1.17)

**Note:** Horsepower listed above is for electric motor drives. For gas engine drives, follow gas engine manufacturers' recommendations. (As an estimate for gas engines, double the horsepower requirements for electric motors listed above.)

Flow Rates and Horsepower Requirements for 5-Roller Pump 5500 Series (55-5110)

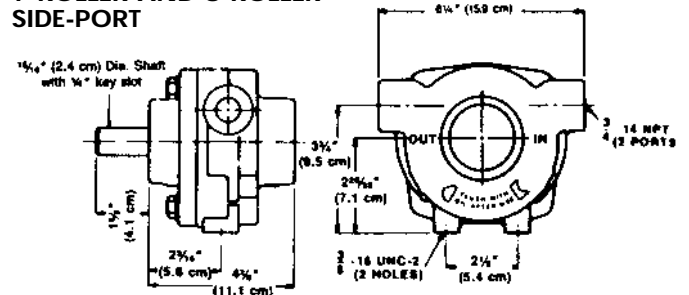
PRESSURE RPM	0 psi GPM (HP)	50 psi GPM (HP)	100 psi GPM (HP)	150 psi GPM (HP)	200 psi GPM (HP)
450°	20.8 (.18)	16.4 (.98)	14.4 (1.74)	11.4 (2.31)	7.5 (2.71)
540°	25.1 (.27)	20.5 (1.16)	17.8 (2.03)	15.4 (2.74)	12.2 (3.44)
650°	30.4 (.39)	25.7 (1.45)	22.6 (2.41)	20.3 (3.42)	17.3 (4.26)
750°	34.7 (.49)	30.7 (1.68)	26.6 (2.73)	24.4 (4.00)	22.0 (5.11)
850°	39.7 (.79)	35.1 (1.93)	31.0 (3.00)	28.1 (4.60)	26.2 (5.95)
1000°	46.5 (1.62)	42.5 (2.93)	38.5 (4.11)	35.1 (5.42)	—

**Note:** To achieve rated capacity 1" suction and pressure hose should be used.

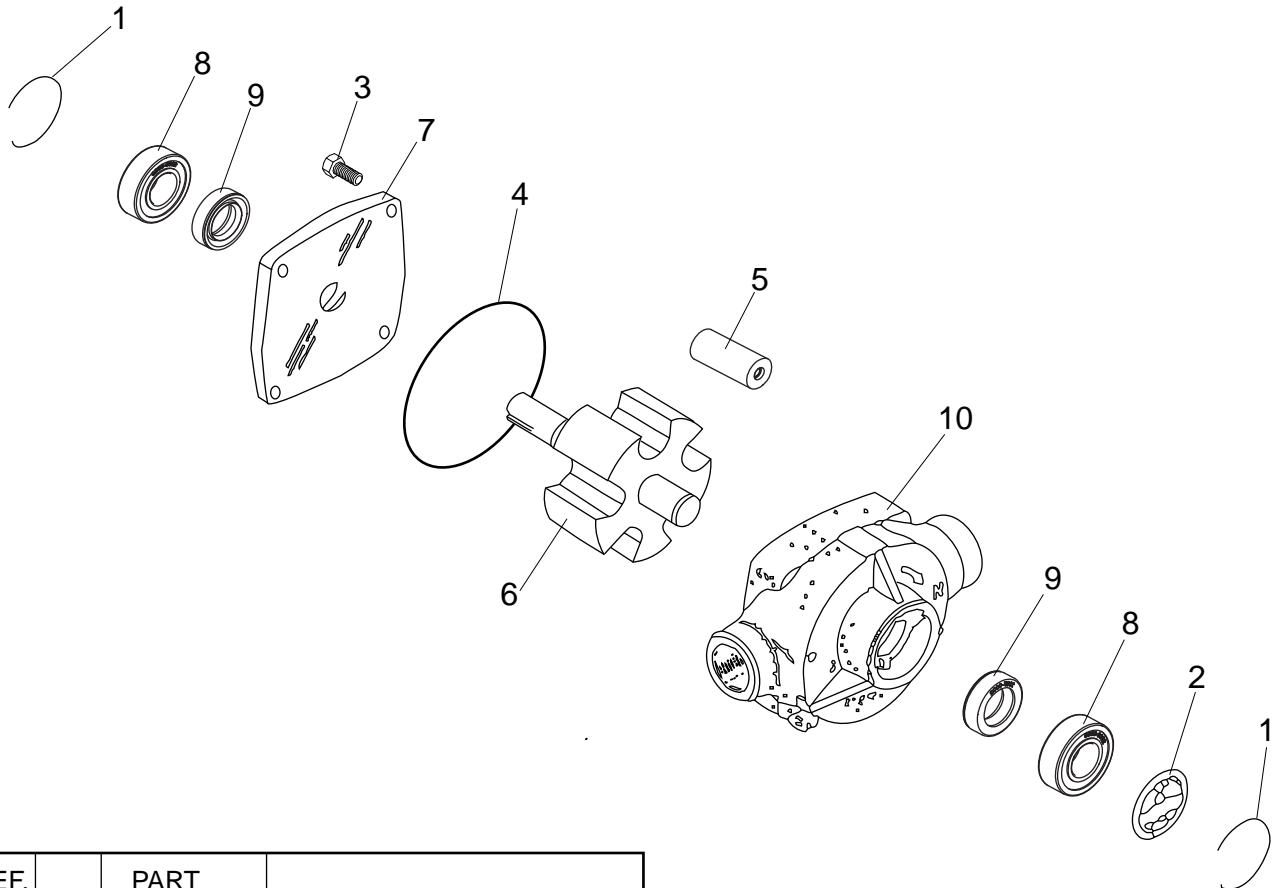
Flow Rates in GPM for 6-7-8-Roller Pumps - 6600, 6601, 7000 and 8800 Series (66-5110, 77-5110, 88-5110)

MODEL	SPEED (RPM)	0 psig	25 psig	50 psig	100 psig	150 psig	200 psig
6-Roller Side & Back (11/16" Rollers)	540	10.8	9.6	8.5	6.9	5.6	4.6
	1000	19.5	18.6	17.8	16.3	15.0	13.8
7-Roller Side-Port (11/16" Rollers)	540	15.0	14.0	13.2	12.0	10.8	9.9
	750	20.0	19.2	18.4	17.2	16.1	15.2
8-Roller Side-Port (11/16" Rollers)	540	13.0	12.1	11.3	10.0	8.7	7.6
	1000	24.0	23.2	22.4	21.0	19.8	18.7

7-ROLLER AND 8-ROLLER SIDE-PORT



Delavan Models 4400C, 4400N, 4400D, 4401C, 4401N, 4401D



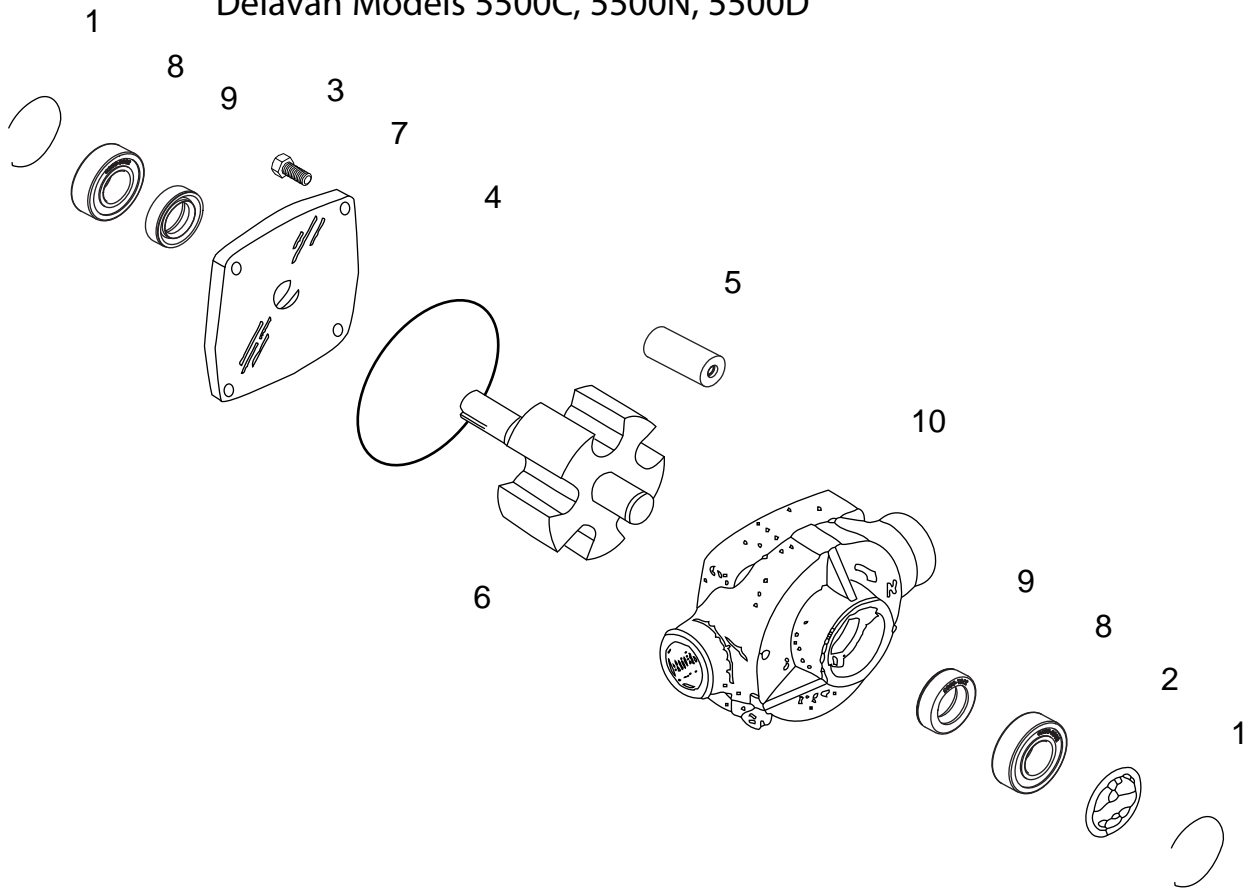
REF. NO.	QTY.	PART NO.	DESCRIPTION
1	2	15070	Snap Ring
2	1	48237	Nameplate 4400C
		48237-1	Nameplate 4400N
		48237-2	Nameplate 4400D
3	4	48236	Cap Screw
4	1	31350-142	Seal Ring
5	4	48234	Ultra Rollers 1/2"
6	1	31661-14	Shaft & Rotor Assy. Cast Iron
		31661-14	Shaft & Rotor Assy. Ni-Resist
		31661-17	Shaft & Rotor Assy. Diamond
		31661-18	Hollow Shaft & Rotor Assy. Cast Iron
	1	31661-18	Hollow Shaft & Rotor Assy. Ni-Resist
1	31661-23	Hollow Shaft & Rotor Assy. Diamond	
7	1	46231-1	Endplate Cast Iron
		46231-2	Endplate Ni-Resist
		46231-3	Endplate Diamond
8	2	15072	Bearing STD#6203ZZ
9	2	20468	Lip Seal Viton
10	1	48229-1	Pump Body Cast Iron
		48229-2	Pump Body Ni-Resist
		48229-3	Pump Body Diamond

**Universal Repair Kit**  
**44-4000 RK**  
**4-Roller Pump Repair Kit for 4400 Pump**

PART NO.	DESCRIPTION	QUANTITY PER KIT
48234	Roller, Polypropylene, 1/2" diameter	4
20468	Lip Seal, Fluorocarbon (Viton)	4
31350-142	Seal Ring	2

Note: Repairs 44-XXXX

# Delavan Models 5500C, 5500N, 5500D



REF. NO.	QTY.	PART NO.	DESCRIPTION
1	2	15334	Snap Ring
2	1	48255	Nameplate 5500C
	1	48255-1	Nameplate 5500N
	1	48255-2	Nameplate 5500D
3	4	15341	Cap Screw
4	1	48252	Seal Ring
5	5	48253	Ultra Rollers 1"
6	1	31661-15	Shaft & Rotor Assy. Cast Iron
	1	31661-15	Shaft & Rotor Assy. Ni-Resist
	1	31661-20	Shaft & Rotor Assy. Diamond
7	1	48248-1	Endplate Cast Iron
	1	48248-2	Endplate Ni-Resist
	1	48248-3	Endplate Diamond
8	2	16228	Bearing STD#6705ZZ
9	2	47927	Lip Seal Viton
10	1	48246-1	Pump Body Cast Iron
	1	48246-2	Pump Body Ni-Resist
	1	48246-3	Pump Body Diamond

## Universal Repair Kit

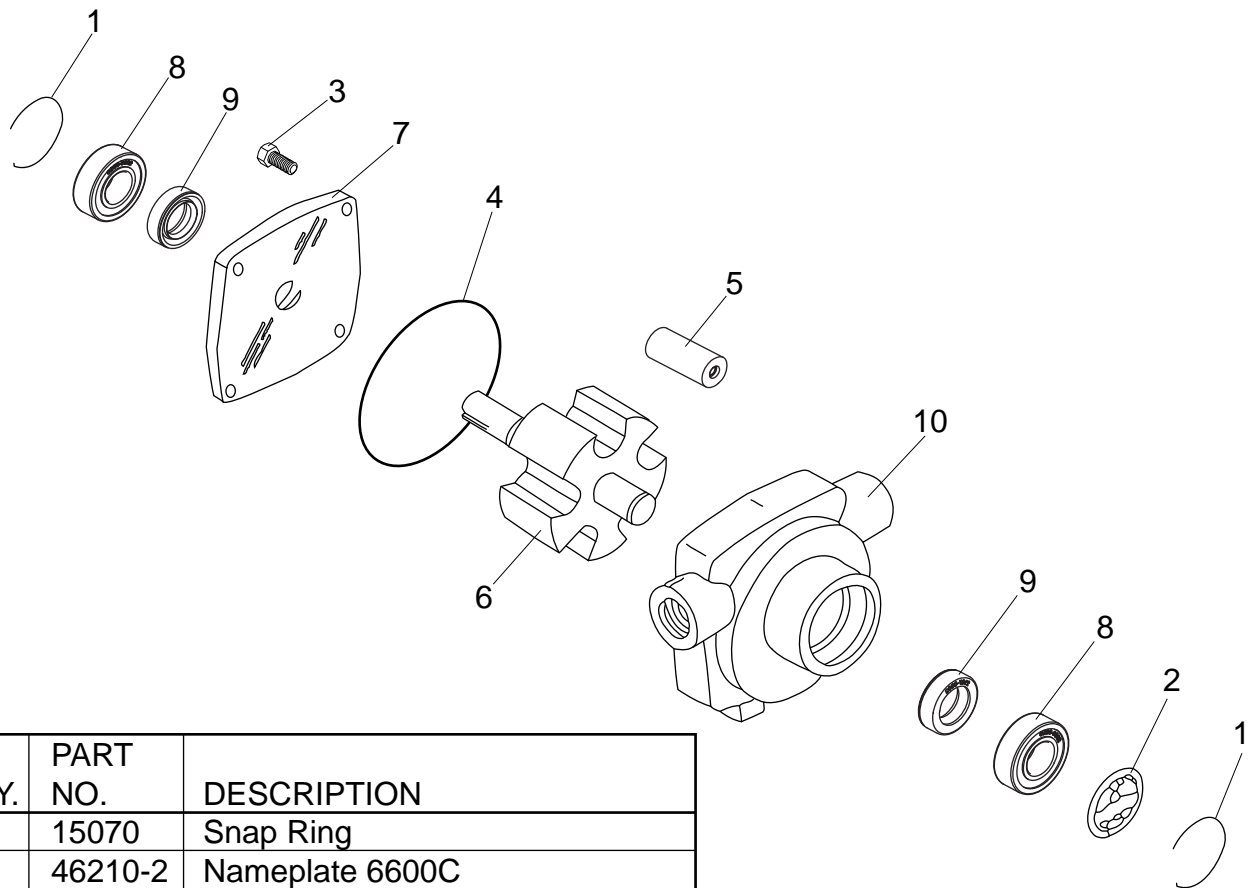
**55-1700 RK**

**5-Roller Pump Repair Kit for 5500 Pump**

PART NO.	DESCRIPTION	QUANTITY PER KIT
48253	Ultra Roller, 1" Diameter	5
47927	Lip Seal, Viton	2
48252	Seal Ring	2

Note: Repairs 55-XXXX

Delavan Models 6600C, 6600N, 6600D, 6601C, 6601N, 6601D



REF. NO.	QTY.	PART NO.	DESCRIPTION
1	2	15070	Snap Ring
2	1	46210-2	Nameplate 6600C
	1	46210-7	Nameplate 6600N
	1	46210-3	Nameplate 6600D
	1	46210-1	Nameplate 6601C
	1	46210-8	Nameplate 6601N
	1	46210-9	Nameplate 6601D
3	4	15077	Capscrew
4	1	24819	Seal Ring
5	6	19341	Ultra Rollers 11/16"
6	1	31661-8	Shaft & Rot(Coarst Iron/Ni-Resist)
	1	31661-9	Shaft & R(oDtiaomrond)
7	1	31664-1	End Plate Cast Iron
	1	31664-2	End Plate Ni-Resist
	1	31664-3	End Plate Diamond
8	2	15072	Bearing (STD#6203ZZ)
9	2	20468	Lip Seal Viton
10	1	50073-1	Pump Body Cast Iron Side
	1	50073-2	Pump Body Ni-Resist Side
	1	50073-3	Pump Body Diamond Side
	1	24817-1	Pump Body Cast Iron Rear
	1	24817-2	Pump Body Ni-Resist Rear
1	24817-3	Pump Body Diamond	

**Universal Repair Kit**

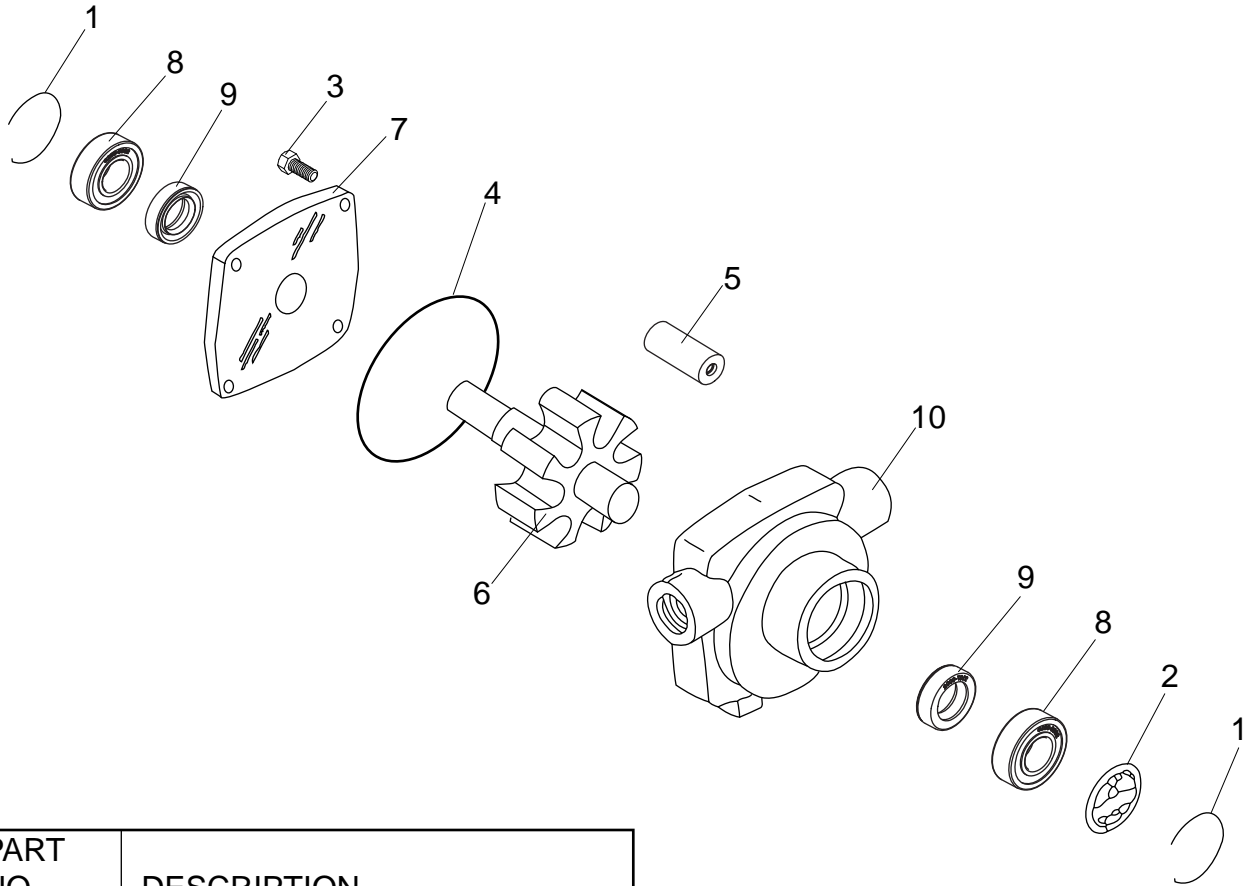
66-6500 RK

6-Roller Pump Repair Kit for 6600 & 6601 Pumps

PART NO.	DESCRIPTION	QUANTITY PER KIT
19341	Ultra Roller 11/16" Diameter	6
20468	Lip Seal, Viton	4
24819	Seal Ring	2

Note: Repairs 66-XXXX

Delavan Models 7000C, 7000N, 7000D



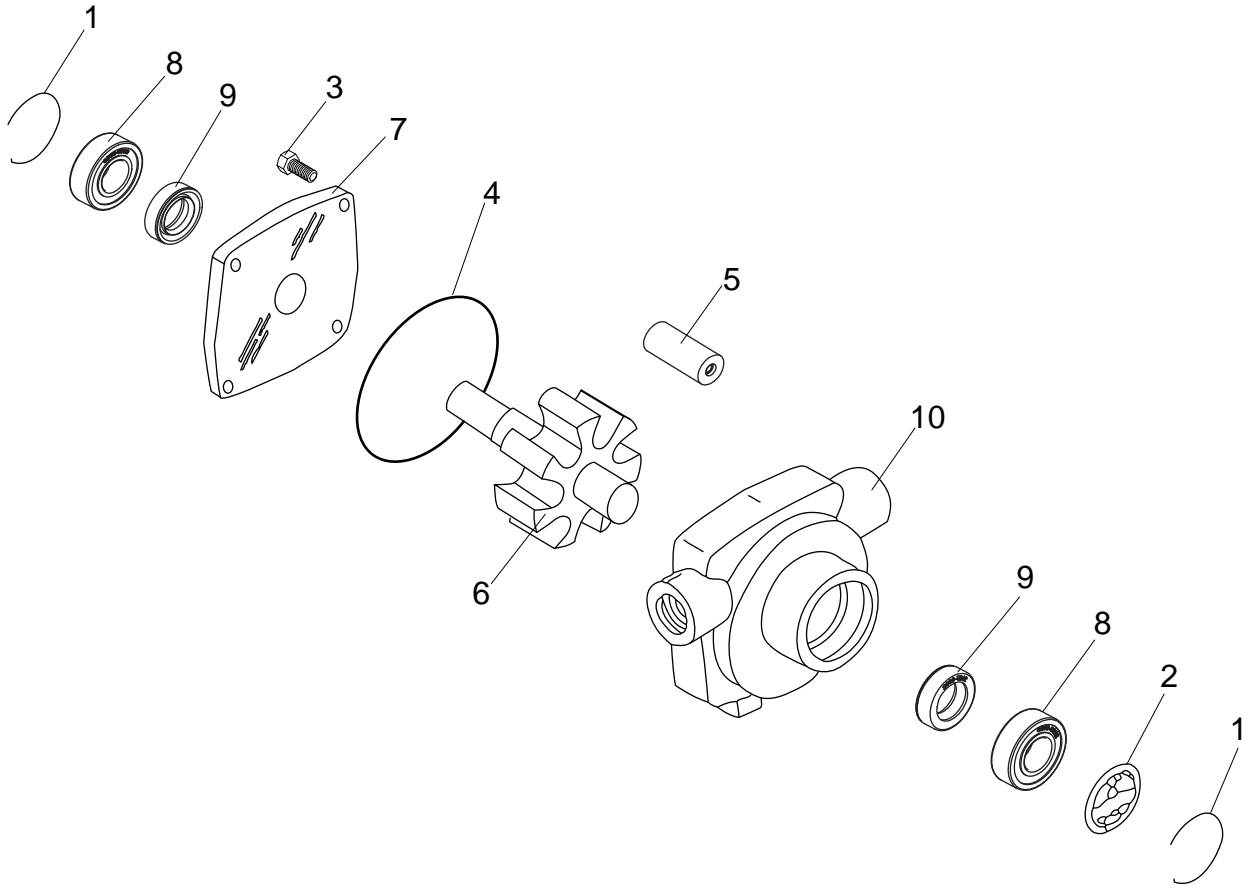
REF. NO.	QTY.	PART NO.	DESCRIPTION
1	2	15334	Snap Ring
2	1	46209-3	Nameplate 7000C
	1	46209-4	Nameplate 7000N
	1	46209-7	Nameplate 7000D
3	4	15341	Capscrew
4	1	24829	Seal Ring
5	7	19341	Ultra Rollers, 11/16"
		31661-10	Shaft & Rotor Assy. (Cast Iron /Ni-Resist)
6	1	31661-11	Shaft & Rotor Assy. Diamond
		31666-1	End Plate Cast Iron
		31666-2	End Plate Ni-Resist
7	1	31666-3	End Plate Diamond
		16228	Bearing (STD#6205ZZ)
		47927	Lip Seal Viton
8	2	24842-1	Pump Body Cast Iron
		24842-2	Pump Body Ni-Resist
		24842-3	Pump Body Diamond

**Universal Repair Kit**  
**70-7700 RK**  
**Pump Repair Kits**

PART NO.	DESCRIPTION	QUANTITY PER KIT
19341	Ultra Roller 11/16" Diameter	7
47927	Lip Seal, Viton	2
24829	Seal Ring	2

Note: Repairs 77-XXXX

Delavan Models 8800C, 8800N, 8800D



REF. NO.	QTY.	PART NO.	DESCRIPTION
1	2	15334	Snap Ring
2	1	46209-1	Nameplate 8800C
	1	46209-2	Nameplate 8800N
	1	46209-6	Nameplate 8800D
3	4	15341	Capscrew
4	1	24829	Seal Ring
5	8	19341	Ultra Rollers, 11/16"
6	1	31661-12	Shaft & Rotor Assy (Cast Iron /Ni-Resist)
	1	31661-24	Shaft & Rotor Assy Diamond
7	1	31666-1	End Plate Cast Iron
	1	31666-2	End Plate Ni-Resist
	1	31666-3	End Plate Diamond
8	2	16228	Bearing (STD#6205ZZ)
9	2	47927	Lip Seal Viton
10	1	24842-3	Pump Body Cast Iron
	1	24842-4	Pump Body Ni-Resist
	1	24842-6	Pump Body Diamond

**Universal Repair Kit**  
**88-7560 RK**  
**Pump Repair Kits**

PART NO.	DESCRIPTION	QUANTITY PER KIT
19341	Ultra Roller 11/16" Diameter	8
47927	Lip Seal, Viton	2
24829	Seal Ring	2

Note: Repairs 88-XXXX