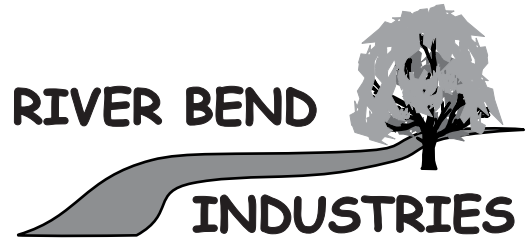
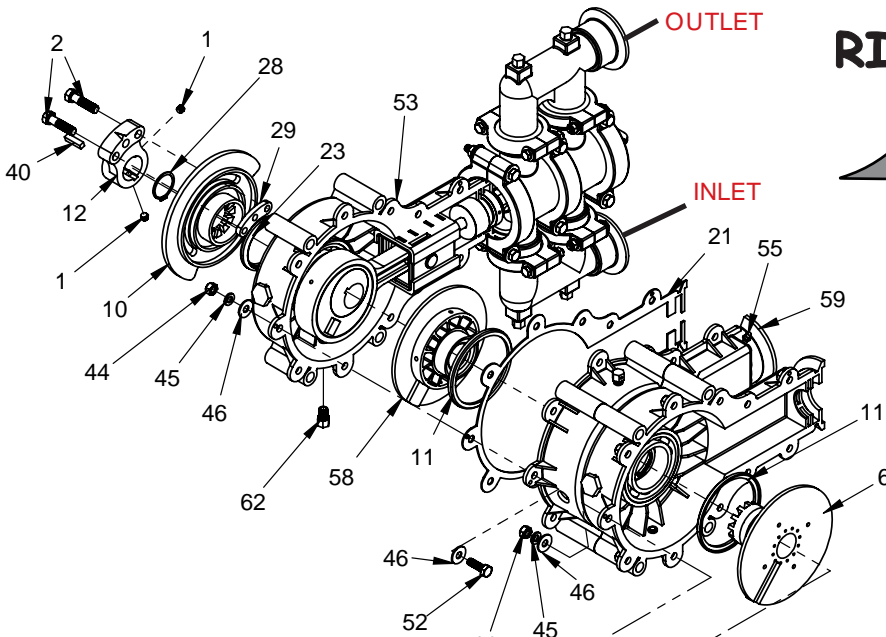


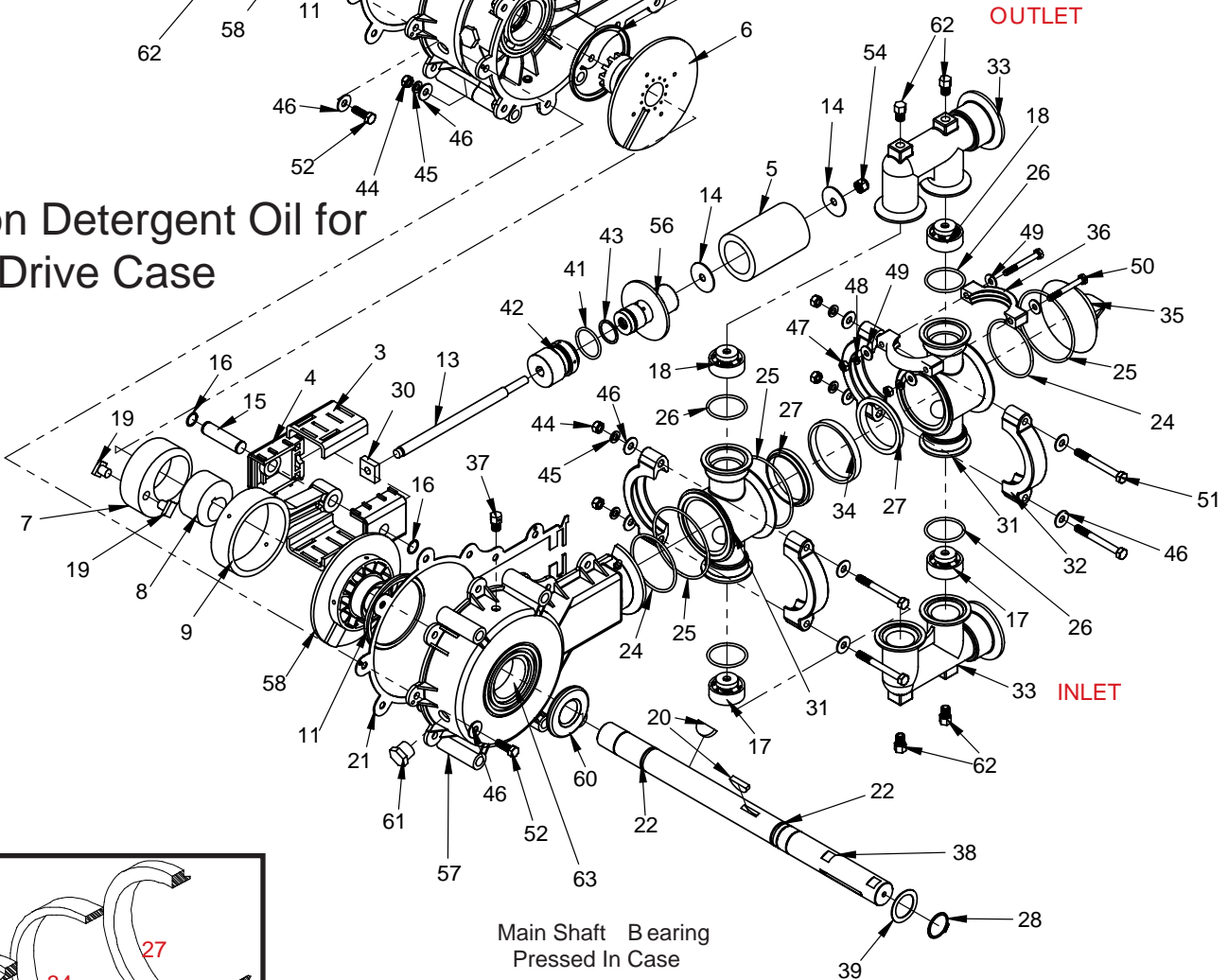
DEMCO Lil' Thumper Pump



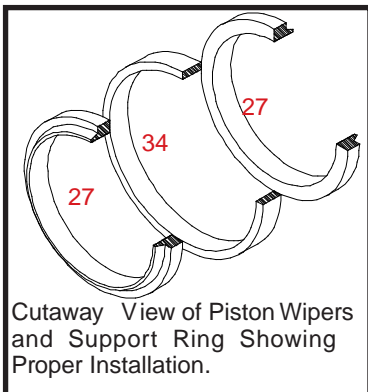
Moorhead, MN 56560
 218-236-1818
 800-365-3070
www.riverbendind.com



30W Non Detergent Oil for
 Drive Case



Main Shaft Bearing
 Pressed In Case



Cutaway View of Piston Wipers
 and Support Ring Showing
 Proper Installation.

Serial #250000 and Up

PISTON PUMP PARTS LIST

Serial #250000 and Up

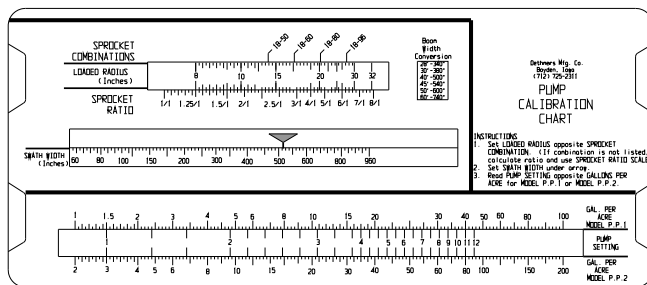
Ref No.	Part No.	Qty		Description
		PP1	PP2	
1.	00087	2	2	5/16"-18UNC x 5/16" Socket Set Screw
2.	00914	2	2	3/8"-16UNC x 1-1/2" Hex Bolt
3.	01166	2	4	Pump Connecting Slide Cover
4.	01167	2	4	Pump Connecting Slide
5.	01168	1	2	UHMW Piston
6.	01169	1	2	Drive Hub, Adjustment Side
7.	01171	1	2	Large Eccentric
8.	01172	1	2	Small Eccentric
9.	01173	1	2	Connecting Rod
10.	01176	1	1	Adjustment Disc
11.	01177	2	4	Drive Hub Thrust Bearing
12.	01191-95	1	1	Adjustment Pointer
13.	01265	1	2	Piston Rod
14.	01313	2	4	SS Piston Thrust Washer
15.	01317	1	2	Wrist Pin
16.	01318	2	4	Wrist Pin Snap Ring
17.	01320	2	4	Intake Manifold Check Valve (Blue)
18.	01321	2	4	Exhaust Manifold Check Valve (Red)
19.	01390	2	4	Drive Hub Adjusting Pin
20.	01391	1	2	1/4" x 1-1/8" Woodruff Key
21.	01426	1	2	Drive Case Gasket
22.	01516	2	2	Main Shaft O-Ring
23.	01517	1	1	Drive Hub Oil Seal (Adjustment Side)
24.	01520	2	4	Cylinder Housing Small O-Ring
25.	01521	3	6	Cylinder Housing Large O-Ring
26.	01522	4	8	Check Valve O-Ring
27.	01524	2	4	Piston Wiper
28.	01528	2	2	Main Shaft Snap Ring
29.	01529-95	1	1	Adjustment Pointer Locking Plate
30.	01530	1	2	Piston Rod Retaining Block
31.	01534	2	4	Cylinder Housing
32.	01535	6	12	Large Clamp
33.	01536	2	4	Intake/Exhaust Manifold
34.	01537	1	2	Piston Wiper Support Ring
35.	01538	1	2	End Cap
36.	01539	8	16	Small Clamp
37.	01597	1	2	1/4" NPT Nylon Breather Plug
38.	01596	1	-	1-1/4" O.D. Main Shaft for PP1
38.	01599	-	1	1-1/4" O.D. Main Shaft for PP2

Ref No.	Part No.	Qty		Description
		PP1	PP2	
39.	01979	1	1	1-1/4" I.D. 18 Ga. Machine Bushing
40.	01989	1	1	1/4" x 1/4" x 1" Key
41.	12489	1	2	Piston Rod Guide Bushing O-Ring
42.	01992	1	2	Piston Rod Guide Bushing
43.	01993	1	2	Rear Stackpack Retainer O-Ring
44.	01996	17	34	5/16"-18UNC Stainless Steel Hex Nut
45.	01997	17	34	5/16" Stainless Steel Lockwasher
46.	01998	34	68	5/16" Stainless Steel Flatwasher
47.	02000	8	16	1/4"-20UNC Stainless Steel Hex Nut
48.	02001	8	16	1/4" Stainless Steel Lockwasher
49.	02002	16	32	1/4" Stainless Steel Flatwasher
50.	02004	8	16	1/4"-20UNC x 2-1/4" SS Hex Head Bolt
51.	02005	6	12	5/16"-18UNC x 3" SS Hex Head Bolt
52.	02006	11	22	5/16"-18UNC x 1" SS Hex Head Bolt
53.	02200	1	1	Half Drive Case
54.	04632	1	2	3/8"-16UNC Stainless Steel Locknut
55.	04642	1	2	Grease Zerk
56.	5136	1	2	Stackpack Sub-Assembly
57.	11924	1	1	Half Drive Case (Clutch side)
58.	11926	-	1	Drive Hub, Clutch Side
59.	11927	1	1	Center Drive Case
60.	11929	1	1	Drive Hub Oil Seal (Clutch side)
61.	F1200	2	4	1/2" NPT Nylon Plug
62.	F1400	5	10	1/4" NPT Nylon Plug
63.	02501	2	2	Main Shaft Bearing (pressed in case)
64.	01582	1	1	Pump Rate Chart
65.	11521-95	1	1	Pump Adjusting Tool

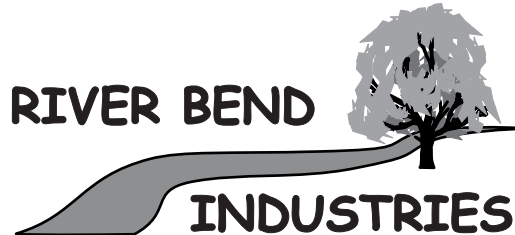
5224		1	2	Wiper Repair Kit
24.	01520	2	4	Cylinder Housing Small O-Ring
25.	01521	3	6	Cylinder Housing Large O-Ring
26.	01522	4	8	Check Valve O-Ring
27.	01524	2	4	Piston Wiper
43.	01993	1	2	Rear Stackpack Retainer O-Ring

Please order replacement parts by PART NO. and DESCRIPTION.

NOTE: The Intake Manifold Check Valves (blue) have weaker springs than the Exhaust Manifold Check Valves (red).

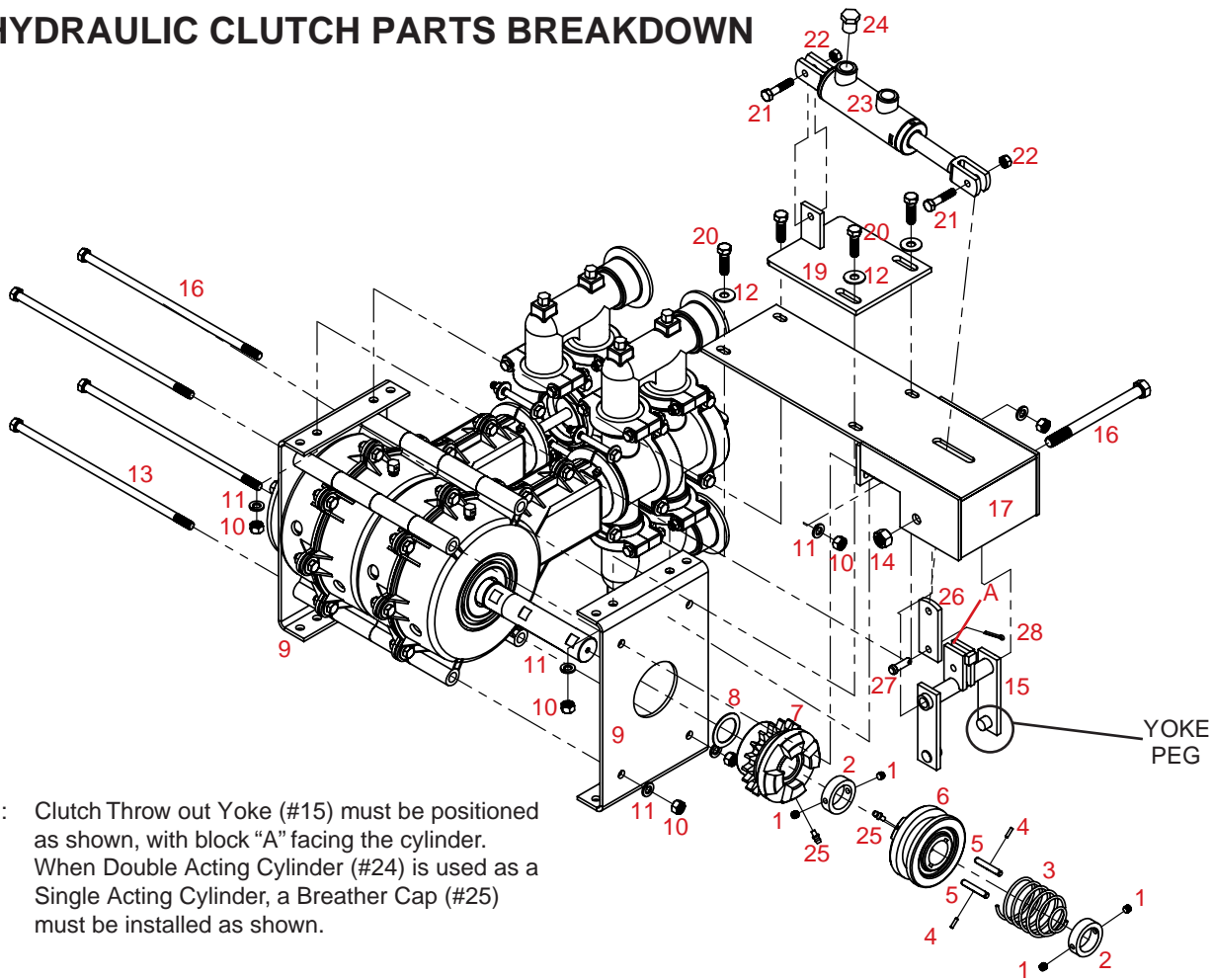


64



Moorhead, MN 56560
218-236-1818
800-365-3070
www.riverbendind.com

HYDRAULIC CLUTCH PARTS BREAKDOWN

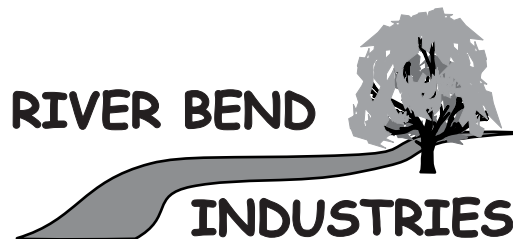


NOTE: Clutch Throw out Yoke (#15) must be positioned as shown, with block "A" facing the cylinder. When Double Acting Cylinder (#24) is used as a Single Acting Cylinder, a Breather Cap (#25) must be installed as shown.

PARTS LIST

REF. NO.	PART NO.	QTY.		DESCRIPTION
		PP1	PP2	
1.	00087	4	4	5/16" x 5/16" Cup Point Set Screw
2.	01598-95	2	2	1-1/4" I.D. Lock Collar
3.	01193	1	1	Clutch Spring
4.	01976	2	2	1/8" x 1/2" Roll Pin
5.	01549	2	2	1/4" x 1/4" x 1-5/8" Key
6.	0118411/4-30	1	1	1-1/4" I.D. Clutch Yoke
7.	01183 11/4-30	1	1	1-1/4" I.D. Sprocket Casting (18 tooth)
8.	01979	1	1	1-1/4" I.D. 18 Ga. Machine Washer
9.	01498-30	2	2	Pump Side Plate
10.	00061	8	8	3/8"-16UNC Hex Nut
11.	00060	8	8	3/8" Lockwasher
12.	00059	4	4	3/8" Flatwasher
13.	02056	-	2	3/8"-16UNC x 11-1/2" Hex Head Bolt
14.	00613	2	-	3/8"-16UNC x 6" Hex Head Bolt Gr.5
14.	02178	1	1	1/2"-13UNC Locknut
15.	01576-30	1	1	Clutch Throw Out Yoke
16.	00349	1	1	1/2"-13UNC x 6" Hex Head Bolt Gr.5

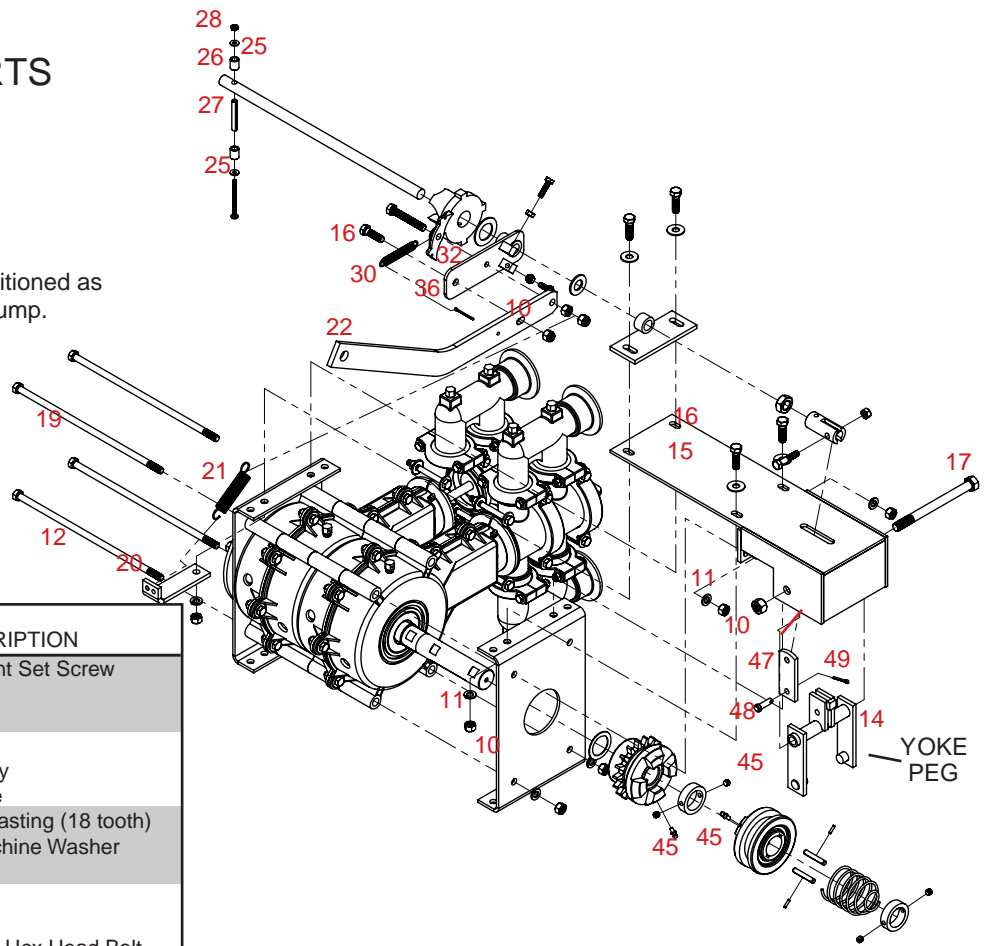
REF. NO.	PART NO.	QTY.		DESCRIPTION
		PP1	PP2	
17.	01525-30	1	-	Piston Pump Top Bracket
17.	01526-30	-	1	Piston Pump Top Bracket
18.	02057	-	2	3/8"-16UNC x 12" Hex Head Bolt
18.	04219	2	-	3/8"-16UNC x 6-1/2" Hex Head Bolt Gr.5
19.	01217-30	1	-	Throw Out Bracket
19.	01574-30	-	1	Throw Out Bracket
20.	00523	2	2	3/8"-16UNC x 1-1/4" Hex Head Bolt Gr.5
21.	00372	2	2	5/16"-18UNC x 1-1/2" Hex Head Bolt Gr.5
22.	02802	2	2	5/16"-18UNC Nylon Insert Locknut
23.	01593-30	1	1	Double Acting Hydraulic Cylinder
24.	00288	1	1	Breather Cap
25.	05023	3	3	3/16" Grease Zerk
26.	01575-30	1	1	Top Pivot Yoke Link
27.	02528	1	1	Clevis Pin
28.	00009	1	1	1/8" Cotter Pin
5222				Hydraulic Cylinder Repair Kit



Moorhead, MN 56560
 218-236-1818
 800-365-3070
www.riverbendind.com

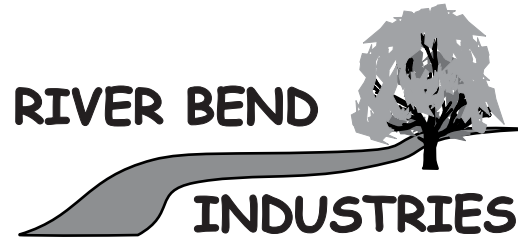
MANUAL CLUTCH PARTS BREAKDOWN

NOTE: Clutch Throw out Yoke must be positioned as shown, with block "A" facing the pump.



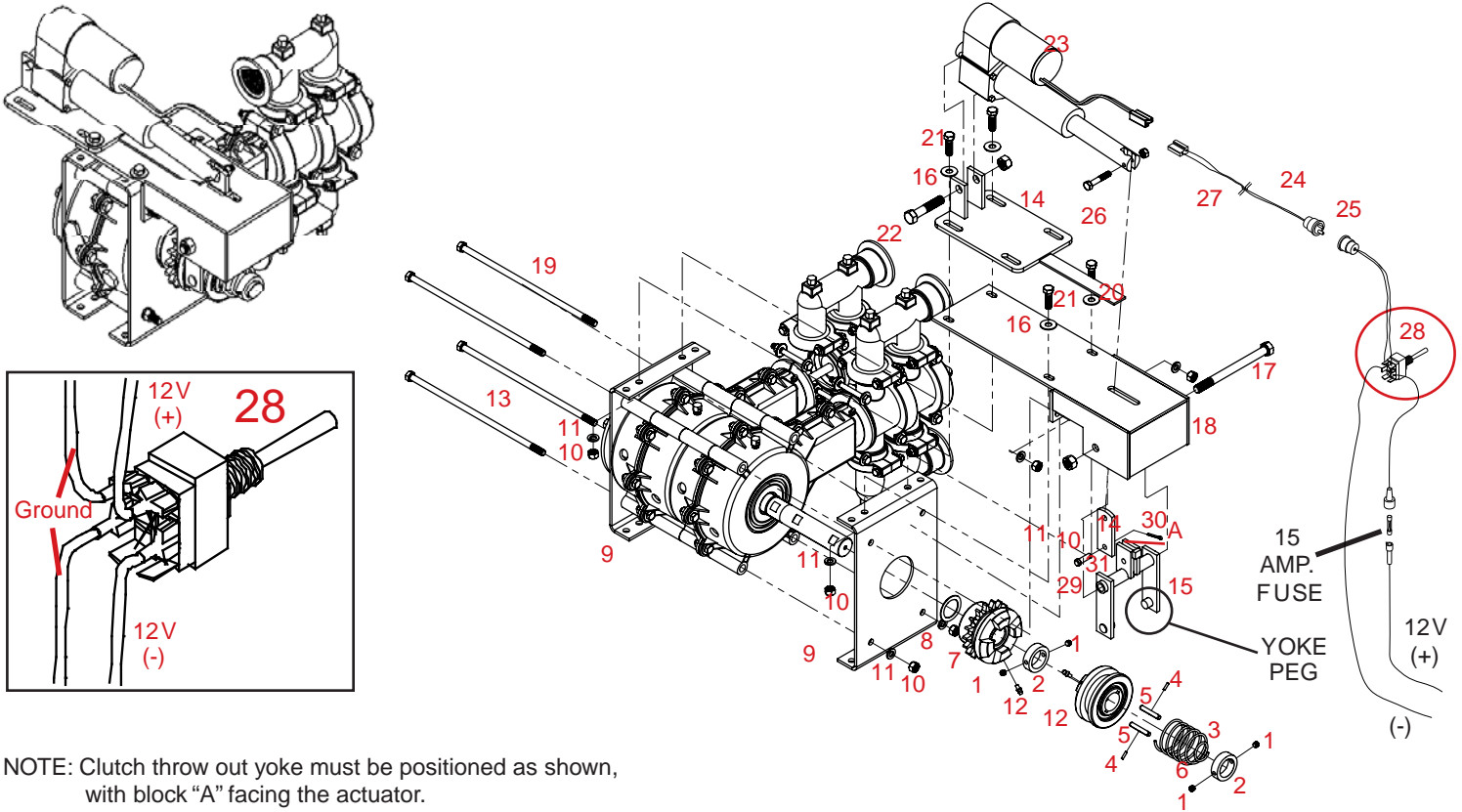
PARTS LIST

REF. NO.	PART NO.	QTY.		DESCRIPTION
		PP1	PP2	
1.	00087	5	5	5/16" x 5/16" Cup Point Set Screw
2.	01598-95	2	2	1-1/4" I.D. Lock Collar
3.	01193	1	1	Clutch Spring
4.	01976	2	2	1/8" x 1/2" Roll Pin
5.	01549	2	2	1/4" x 1/4" x 1-5/8" Key
6.	01184 11/4-30	1	1	1-1/4" I.D. Clutch Yoke
7.	01183 1 1/4-30	1	1	1-1/4" I.D. Sprocket Casting (18 tooth)
8.	01979	1	1	1-1/4" I.D. 18 Ga. Machine Washer
9.	01498-30	2	2	Pump Side Plate
10.	00061	9	9	3/8"-16UNC Hex Nut
11.	00060	8	8	3/8" Lockwasher
12.	02056	-	2	3/8"-16UNC x 11-1/2" Hex Head Bolt
12.	00613	2	-	3/8"-16UNC x 6" Hex Head Bolt Gr. 5
13.	00173	1	1	1/2"-13UNC Locknut
14.	01576-30	1	1	Clutch Throw Out Yoke
15.	00059	4	4	3/8" Flatwasher
16.	00523	5	5	3/8"-16UNC x 1.25" Hex Head Bolt Gr. 5
17.	00349	1	1	1/2"-13UNC x 6" Hex Head Bolt Gr. 5
18.	01525-30	1	-	Piston Pump Top Bracket
18.	01526-30	-	1	Piston Pump Top Bracket
19.	02057	-	2	3/8"-16UNC x 12" Hex Head Bolt
19.	04219	2	-	3/8"-16UNC x 6-1/2" Hex Head Bolt Gr. 5
20.	01527-30	1	1	Throw Out Arm Return Spring Bracket
21.	01547	1	1	Throw Out Arm Return Spring
22.	01211-30	1	1	Throw Out Arm Extension Handle
23.	01982	1	1	3/32" x 1-1/4" Cotter Key
24.	01983	1	1	#10 x 2-1/2" Round Head Stove Bolt
25.	07490	2	2	3/16" Flatwasher
26.	01212-95	2	2	Throw Out Roller
27.	01985	1	1	5/16" x 2" Roll Pin
28.	01986	1	1	#10 Nut
29.	01214-95	1	-	Throw Out Shaft
29.	01565-95	-	1	Throw Out Shaft
30.	01548	1	1	Throw Out Pawl Spring
31.	01987	1	1	3/8"-16UNC x 2-1/2" Full Thread Hex Head Bolt
32.	01185	1	1	Throw Out Pawl
33.	01186-30	1	1	Throw Out Pawl Ratchet Casting
34.	00062	2	2	1/4"-20UNC Hex Nut
35.	04055	2	2	1/4"-20UNC x 1" Hex Head bolt
36.	01213-30	1	1	Throw Out Arm Plate
37.	02592	2	2	3/8"-16UNC Nylon Insert Locknut
38.	00496	1	1	5/8" Machine Washer
39.	00914	1	1	3/8"-16UNC x 1-1/2" Hex Head Bolt Gr.5
40.	01216-30	1	1	Throw Out Arm Bracket
41.	00489	1	1	5/8"-11UNC Jam Nut
42.	01215-95	1	1	Clutch Throw Out Shaft Yoke Connector
43.	02802	1	1	5/16"-18UNC Nylon Insert Locknut
44.	00372	1	1	5/16"-18UNC x 1-1/2" Hex Bolt Gr. 5
45.	05023	4	4	3/16" Grease Zerk
46.	05587	1	1	1.00" X 14GA Machine Washer
47.	01575-30	1	1	Top Pivot Yoke Link
48.	02528	1	1	Clevis Pin
49.	00009	1	1	1/8" Cotter Pin



Moorhead, MN 56560
218-236-1818
800-365-3070
www.riverbendind.com

ELECTRIC CLUTCH PARTS BREAKDOWN

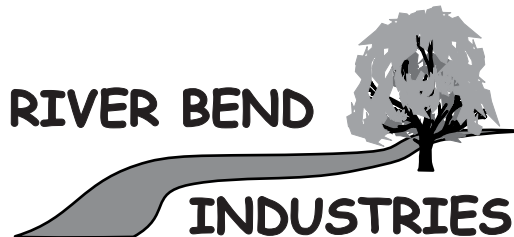


NOTE: Clutch throw out yoke must be positioned as shown, with block "A" facing the actuator.

PARTS LIST

REF. NO.	PART NO.	QTY.		DESCRIPTION
		PP1	PP2	
1.	00087	4	4	5/16" x 5/16" Cup Point Set Screw
2.	01598-95	2	2	1-1/4" I.D. Lock Collar
3.	01193	1	1	Clutch Spring
4.	01976	2	2	1/8" x 1/2" Roll Pin
5.	01549	2	2	1/4" x 1/4" x 1-5/8" Key
6.	01184 1 1/4-30	1	1	1-1/4" I.D. Clutch Yoke
7.	01183 1 1/4-30	1	1	1-1/4" I.D. Sprocket Casting (18 tooth)
8.	01979	3	3	1-1/4" I.D. 18 Ga. Machine Washer
9.	01498-30	2	2	Pump Side Plate
10.	00061	10	10	3/8"-16UNC Hex Nut
11.	00060	8	8	3/8" Lockwasher
12.	05023	3	3	3/16" Grease Zerk
13.	02056	-	2	3/8"-16UNC x 11-1/2" Hex Head Bolt
13.	00613	2	-	3/8"-16UNC x 6" Hex Head Bolt Gr. 5
14.	02178	2	2	1/2"-13UNC Nylon Locknut
15.	01576-30	1	1	Clutch Throw out Yoke
16.	00059	4	4	3/8" Flatwasher
17.	00349	1	1	1/2"-13UNC x 6" Hex Head Bolt Gr. 5

REF. NO.	PART NO.	QTY.		DESCRIPTION
		PP1	PP2	
18.	01525-30	1	-	Piston Pump Top Bracket
18.	01526-30	-	1	Piston Pump Top Bracket
19.	02057	-	2	3/8"-16UNC x 12" Hex Head Bolt
19.	04219	2	-	3/8"-16UNC x 6-1/2" Hex Head Bolt Gr. 5
20.	01577-30	1	1	Top Mounting Bracket
21.	00523	4	4	3/8"-16UNC x 1-1/4" Hex Head Bolt Gr.5
22.	01264	1	1	1/2"-13UNC x 2-1/2" Hex Head Bolt Gr. 5
23.	01578	1	1	12 Volt DC Actuator
-	01600	-	-	Motor and Pinion Gear assy. for 01578
24.	02362	1	1	Two Wire Connecting Cable 20'
25.	05000	1	1	Two Prong Wire Assy (Connectors Only)
26.	04759	1	1	5/16"-18UNC x 1-3/4" Hex Head Bolt Gr.5
27.	02802	1	1	5/16"-18UNC Nylon Insert Locknut
28.	01579	1	1	Switch Assembly (includes fuse)
-	02842	-	-	Switch Only
*	02364	-	-	Opt. 20' Ext. for PP Electric Shut-OFF
29.	02528	1	1	Clevis Pin
30.	00009	1	1	1/8" Cotter Pin
31.	01575-30	1	1	Top Pivot Yoke Link



Moorhead, MN 56560
 218-236-1818
 800-365-3070
 www.riverbendind.com