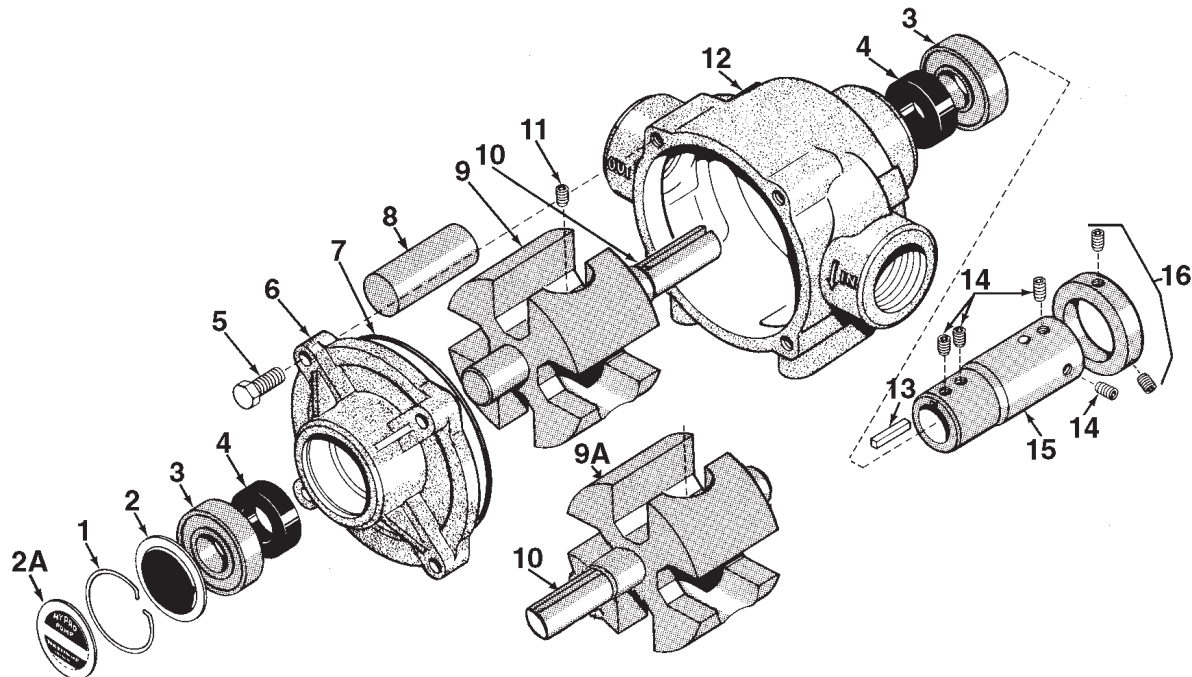


Model 1200



RIVER BEND



INDUSTRIES

Moorhead, MN 56560
218-236-1818
800-365-3070

www.riverbendind.com

Ref. No.	Qty. Req'd.	Part Number	Description
1	1	1800-0013	Retainer Ring
2	1	2840-0049	Bearing Cover
2A	1	6031-0258	Name Plate (Specify Pump Model #)
3	2	2001-0006	Ball Bearing
4	2	2112-0008	Buna-N Seal (Standard)
4	2	2112-0009	Viton Seal (Optional)
5	4	2210-0019	Hex Head Bolt
6	1	0200-1200C	Endplate (Cast Iron) with seal
7	1	1720-0127	O-ring Gasket for Endplate
8	4	1005-0006	Super Roller (Standard)
9	1	0300-1200C	Rotor (Cast Iron) with shaft (Std. Rotation)
9A	1	0301-1200C	Rotor (Cast Iron) w/shaft (Reverse Rotation)

Ref. No.	Qty. Req'd.	Part Number	Description
10	1	0500-1200	Shaft
11	1	2230-0018	Set Screw
12	1	0100-1200C	Body (Cast Iron) with seal
13	1	1610-0005	Key
14	1 kit	3410-0031	Set Screw Kit
15	1	1320-0081	1-3/8" 6-spline 540 rpm PTO Adapter (Forged Steel) Includes Kit No. 3410-0031
16	1 kit	3430-0207	Locking Collar Kit — Includes: (1) Collar and (2) Set Screws

Parts Kit No. 3430-0374 Consists of (4) Ref. 8 Super Rollers, (1) Ref. 7 O-Ring, and (2) Ref. 4 Buna-N Seals.