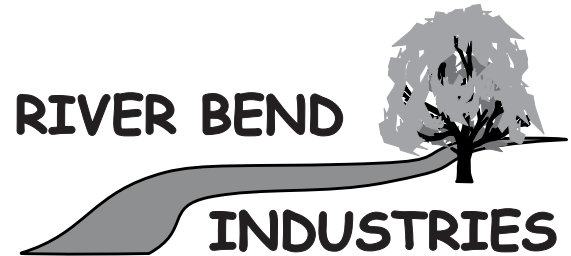
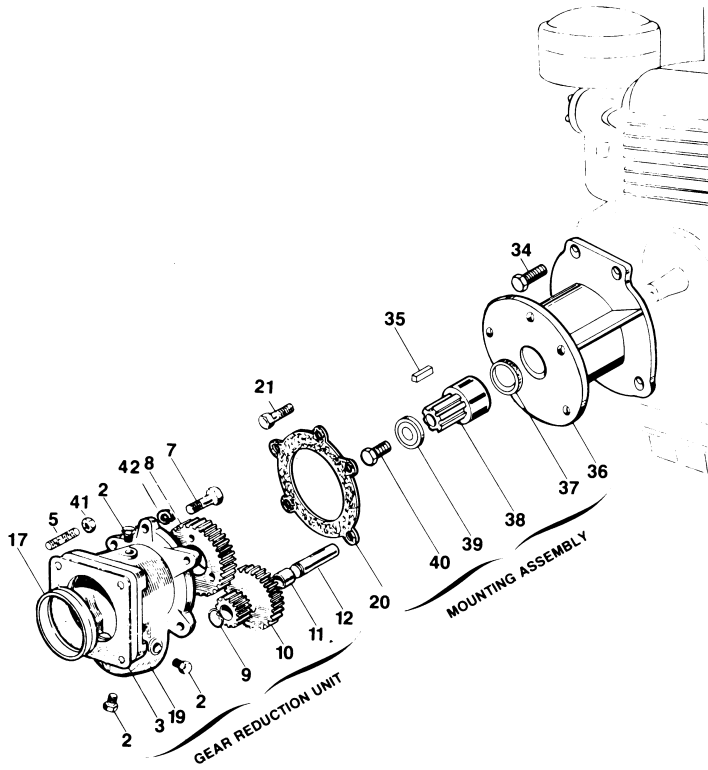


Hypro 9910-1644 Gear Reduction Old Style (Aluminum Color, No Cooling Fins)



Moorhead, MN 56560
218-236-1818
800-365-3070
www.riverbendind.com

| Re f. No. | Qn ty. Re q'd | Pa rt Number | Desc ription |
|-----------|---------------|--------------|-------------------------------------|
| 2 | 4 | 9910-620301 | Plug |
| 3 | 1 | 9910-650270 | Gasket |
| 5 | 4 | 9910-180140 | Stud |
| 7 | 3 | 9910-650700 | Bolt |
| 8 | 1 | 9910-620540 | Driven Gear |
| 9 | 1 | 9910-600180 | O-Ring |
| 10 | 1 | 9910-620510 | Idler Gear |
| 11 | 2 | 9910-620532 | (3 Piece - |
| | 1 | 9910-620531 | Bearing Assembly) |
| 12 | 1 | 9910-620500 | Shaft |
| 17 | 1 | 9910-650260 | Support Ring |
| 19 | 1 | 9910-620490 | Gear Case |
| 20 | 1 | 9910-620521 | Gasket |
| 21 | 5 | 9910-180370 | Hex Head Bolt |
| 34 | 4 | 9910-650610 | Black Hex Head Bolt |
| 35 | 1 | 9910-650600 | Engine Shaft Key |
| 36 | 1 | 9910-650570 | Mounting Flange |
| 37 | 1 | 9910-650490 | Seal (Installed in Mounting Flange) |
| 38 | 1 | 9910-650580 | Driver Gear |
| 39 | 1 | 9910-650590 | Washer |
| 40 | 1 | 9910-650620 | N. F. Bolt (7/16" x 20 c3/4) |
| 41 | 4 | 9910-180150 | Nut |
| 42 | 4 | 9910-650530 | Lock Washer |