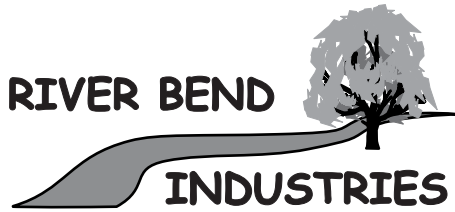
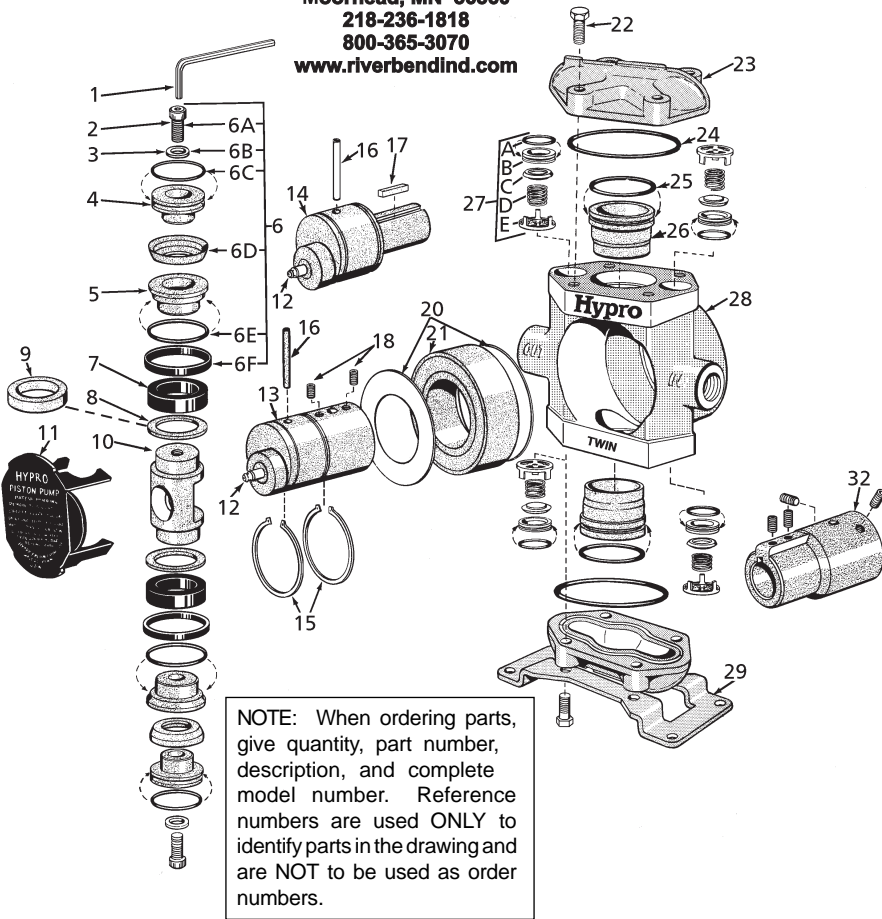


Models 5206C and 5210C



Moorhead, MN 56560
218-236-1818
800-365-3070
www.riverbendind.com



Piston Stack Parts Kits

Leather Cup Kit No. 3430-0037 (STD)
Consists of two each of the following parts: No. 2220-0013 Piston Cap Screw (Ref. 6A), No. 2270-0012 Washer (Ref. 6B), No. 1720-0030 O-Ring (Ref. 6C), No. 2150-0001 Leather Cup (Ref. 6D), No. 1720-0065 O-Ring (Ref. 6E) and No. 1440-0012 Seal Ring (Ref. 6F).

Fabric Cup Kit No. 3430-0039
Same as Leather Cup Kit except with two No. 2150-0012 Fabric Cups.

Rubber Cup Kit No. 3430-0189
Same as Leather Cup Kit except with two No. 2150-0042 Rubber Cups.

Crankshaft Assemblies

Sub-Assemblies

Include Grease Fitting (Ref. 12), Crankshaft with cam bearing (Ref. 13 or 14) and Crankpin Retainer (Ref. 16).

Complete Assemblies

Include Sub-Assembly components plus Retaining Rings (Ref. 15), slinger rings (Ref. 20) and Bearing (Ref. 21).

| Complete Sub-Assembly PART NO. | Assembly PART NO. | Pump Model Number |
|--|-------------------|-------------------|
| with 1-3/8" Hollow PTO Shaft (Ref. 13) | | |
| 5503-5206 | 5501-5206 | 5206C-H |
| 5503-5210 | 5501-5210 | 5210C-H |
| with 1" Solid Shaft (Ref. 14) | | |
| 5003-5206 | 5001-5206 | 5206C |
| 5003-5210 | 5001-5210 | 5210C |

| Ref. No. | Qty. Req. | Part Number | Description |
|----------|-----------|-------------|--|
| 1 | 1 | 3020-0008 | Allen Wrench (Optional) |
| 2 | 2 | 2220-0013 | Piston Cap Screw |
| 3 | 2 | 2270-0012 | Washer |
| 4 | 2 | 1830-0039 | Piston Cup Spreader |
| 5 | 2 | 1410-0054 | Cup Backing Plate |
| 6 | 1 | 3430-0037 | Piston Stack Parts Kit with Leather Cups (Standard) |
| 6 | 1 | 3430-0039 | Piston Stack Parts Kit with Fabric Cups (Model 5200-F) |
| 6 | 1 | 3430-0189 | Piston Stack Parts Kit with Buna-N Cups (Model 5200-R) |
| 7 | 2 | 1440-0005 | Piston Guide |
| 8 | 2 | 1410-0018 | Support Ring For 5210 Models Only |
| 9 | 2 | 1410-0020 | Support Ring For 5206 Models Only |
| 10 | 1 | 0503-5200 | Connecting Rod |
| 11 | 1 | 0602-5200 | Safety Cover |
| 12 | 1 | 2405-0006 | Grease Fitting Assembly |
| 13 | 1 | See Listing | Crankshaft (Hollow Shaft Models) |
| 14 | 1 | See Listing | Crankshaft (Solid Shaft Models) |
| 15 | 2 | 1810-0001 | Retainer Ring |

| Ref. No. | Qty. Req. | Part Number | Description |
|----------|-----------|-------------|---|
| 16 | 1 | 1600-0013 | Crankpin Retainer |
| 17 | 1 | 1610-0005 | Key (Solid Shaft Models) |
| 18 | 2 | 2230-0003 | Set Screw |
| 20 | 2 | 1410-0006 | Slinger Ring |
| 21 | 1 | 2005-0002 | Main Bearing |
| 22 | 8 | 2210-0062 | Cylinder Head Bolt |
| 23 | 2 | 0203-5200C | Cylinder Head |
| 24 | 2 | 1720-0028 | O-Ring – for Cylinder Head |
| 25 | 2 | 1720-0019 | O-Ring – for Cylinder Sleeve |
| 26 | 2 | 3550-0007 | Cylinder Sleeve |
| 27 | 4 | 3400-0038 | Valve Assembly—Consists of: O-ring (Ref. A), Valve Seat (Ref. B), Valve Poppet (Ref. C), Valve Spring (Ref. D) and Valve Spring Retainer (Ref. E) |
| 28 | 1 | 0100-5200C | Body |
| 29 | 1 | 1510-0024 | Base |
| 32 | 1 | 1320-0081 | Adapter-Adapts 1" solid shaft to 1- 3/8" 6-spline PTO hollow shaft (Includes set screws.) |