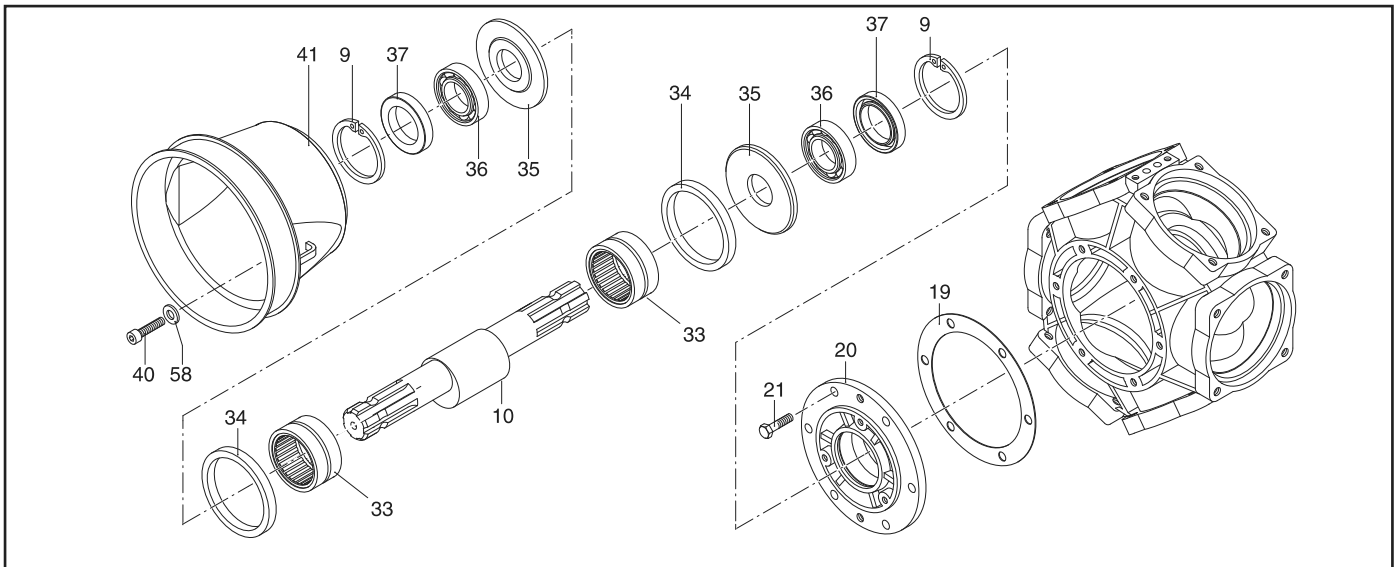
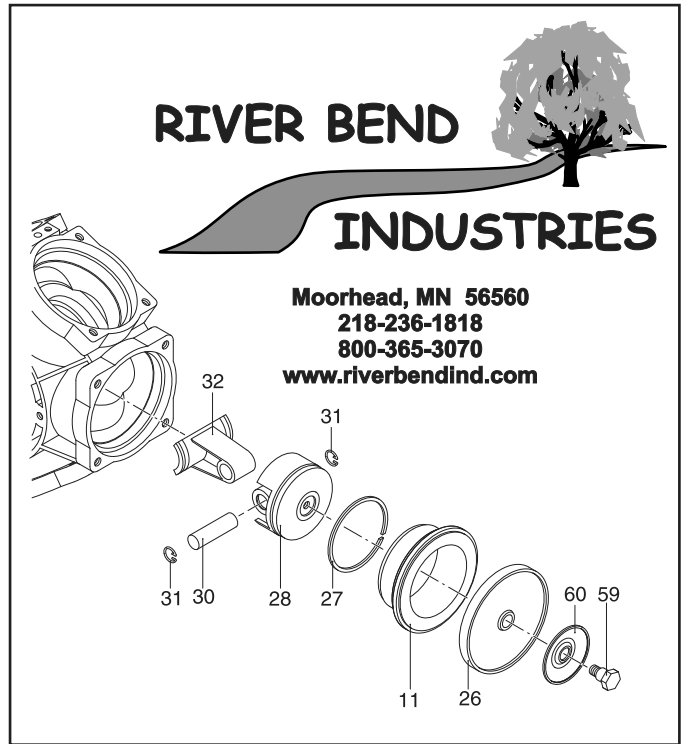
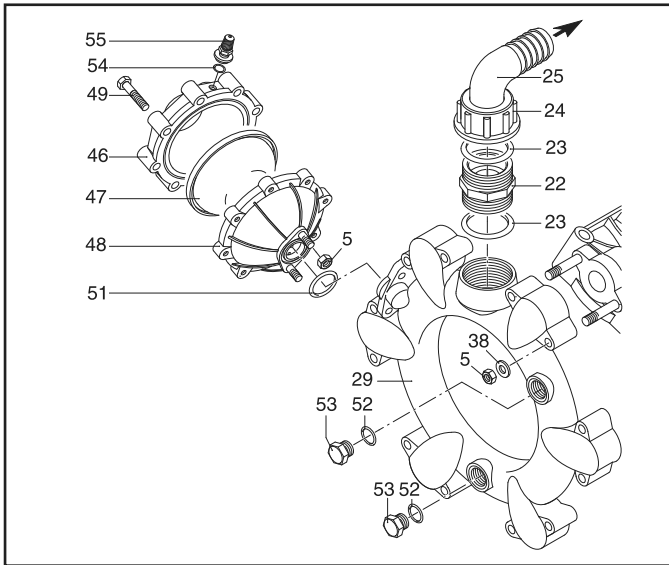
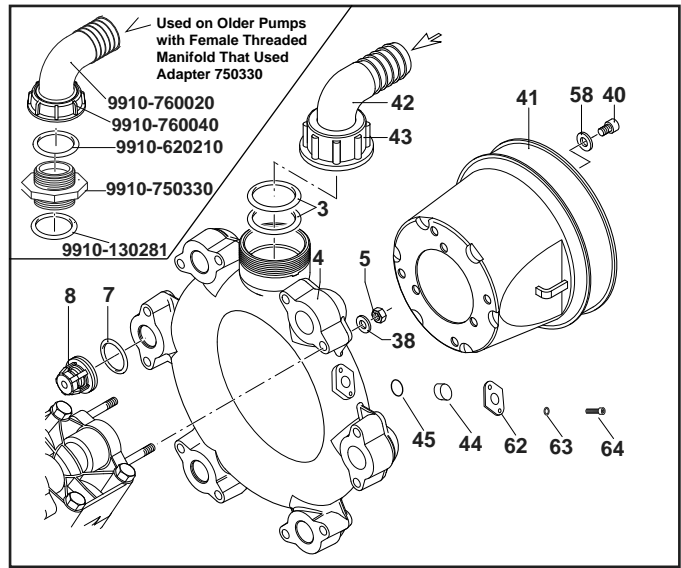
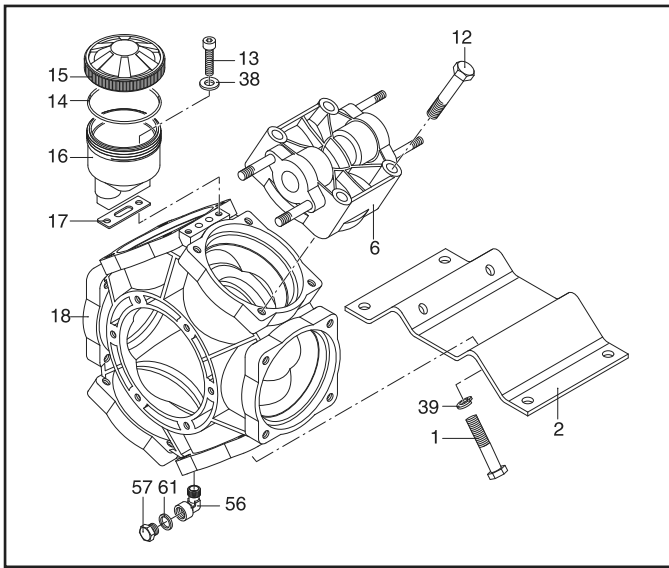




# 9910-D230 and 9910-D250





# 9910-D230 9910-D250

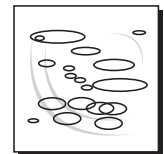
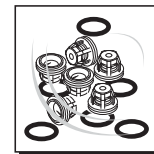
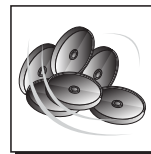
| REF. NO. | PART NUMBER  | DESCRIPTION   | QTY. REQ'D |
|----------|--------------|---|------------|
| 1        | 9910-750071  | Bolt  | 4          |
| 2        | 9910-750200  | Base  | 1          |
| 3        | 9910-620210  | O-ring  | 2          |
| 4        | 9910-KIT2486 | Suction manifold kit (Includes Ref. 3, 42, 43, 44, 45 and 62) | 1          |
| 5        | 9910-380242  | Nut   | 26         |
| 6        | 9910-750100  | Head  | 6          |
| 7        | 9910-680070  | O-ring  | 12         |
| 8        | 9910-759051  | Complete valve  | 12         |
| 9        | 9910-200390  | Retainer ring   | 2          |
| 10       | 9910-750170  | Crankshaft  | 1          |
| 11       | 9910-750110  | Sleeve  | 6          |
| 12       | 9910-750061  | Bolt  | 20         |
| 13       | 9910-680350  | Bolt  | 2          |
| 14       | 9910-1040060 | O-ring  | 1          |
| 15       | 9910-750057  | Cap, oil tank   | 1          |
| 16       | 9910-750030  | Oil sight glass   | 1          |
| 17       | 9910-750040  | Gasket  | 1          |
| 18       | 9910-750010  | Pump body   | 1          |
| 19       | 9910-680250  | Gasket  | 1          |
| 20       | 9910-680020  | Shaft support   | 1          |
| 21       | 9910-160672  | Bolt  | 6          |
| 22       | 9910-540530  | Threaded adapter  | 1          |
| 23       | 9910-250310  | O-ring  | 1          |
| 24       | 9910-540540  | Ring nut  | 1          |
| 25       | 9910-392130  | Elbow 1-1/2"  | 1          |
| 26       | 9910-550085  | Diaphragm (Desmopan) Standard                                 | 6          |
| 26A      | 9910-550080  | Diaphragm (Buna) Optional                                     | 6          |
| 27       | 9910-500260  | Piston ring   | 6          |
| 28       | 9910-750122  | Piston  | 6          |
| 29       | 9910-750420  | Manifold  | 1          |
| 30       | 9910-160700  | Pin   | 6          |
| 31       | 9910-160691  | Pin ring  | 2          |
| 32       | 9910-750140  | Connecting rod  | 6          |
| 33       | 9910-750090  | Roller bearing  | 2          |
| 34       | 9910-750130  | Connecting rod ring   | 2          |
| 35       | 9910-540040  | Spacer washer   | 2          |
| 36       | 9910-230350  | Bearing   | 2          |
| 37       | 9910-160740  | Seal ring   | 2          |
| 38       | 9910-380243  | Washer  | 26         |
| 39       | 9910-250143  | Washer  | 4          |
| 40       | 9910-850251  | Bolt  | 6          |
| 41       | 9910-1500350 | Shield  | 2          |
| 42       | 9910-750850  | Elbow 2"  | 1          |
| 43       | 9910-750710  | Ring nut  | 1          |
| 44       | 9910-2420120 | Plug  | 1          |
| 45       | 9910-480440  | O-ring  | 1          |
| 46       | 9910-620232  | Upper air chamber   | 1          |
| 47       | 9910-550190  | Accumulator diaphragm   | 1          |
| 48       | 9910-680180  | Lower air chamber   | 1          |
| 49       | 9910-621781  | Bolt  | 8          |
| 51       | 9910-390290  | O-ring  | 1          |
| 52       | 9910-180101  | O-ring  | 2          |
| 53       | 9910-330173  | Plug  | 2          |
| 54       | 9910-650542  | Gasket  | 1          |
| 55       | 9910-180020  | Air valve   | 1          |
| 56       | 9910-750370  | Elbow   | 1          |
| 57       | 9910-880581  | Oil drain plug  | 1          |
| 58       | 9910-390314  | Washer  | 6          |
| 59       | 9910-580360  | Diaphragm bolt  | 6          |
| 60       | 9910-580370  | Retainer washer   | 6          |

| REF. NO. | PART NUMBER  | DESCRIPTION | QTY. REQ'D |
|----------|--------------|-------------|------------|
| 61       | 9910-880820  | Washer      | 1          |
| 62       | 9910-2420110 | Flange      | 1          |
| 63       | 9910-2420290 | Washer      | 2          |
| 64       | 9910-2420280 | Bolt        | 2          |



**Moorhead, MN 56560**  
**218-236-1818**  
**800-365-3070**  
[www.riverbendind.com](http://www.riverbendind.com)

| Ref. No. | Description    | Tightening Torque |      |
|----------|----------------|-------------------|------|
|          |                | In. Lbs.          | Nm   |
| 1        | Bolt           | 435.5             | 49.0 |
| 5        | Nut            | 171.4             | 19.6 |
| 12       | Bolt           | 435.5             | 49.0 |
| 13       | Bolt           | 87.5              | 9.8  |
| 21       | Bolt           | 304.8             | 34.3 |
| 40       | Bolt           | 87.5              | 9.8  |
| 49       | Bolt           | 171.4             | 19.6 |
| 53       | Plug           | 350.0             | 39.2 |
| 57       | Plug           | 171.4             | 19.6 |
| 59       | Diaphragm Bolt | 262.5             | 29.4 |



| 9910-KIT1722<br>Diaphragm Kit<br>Desmopan |      |
|---|------|
| REF. NO.                                  | QTY. |
| 7   | 12   |
| 26  | 6    |
| 47  | 1    |

| 9910-KIT2114<br>Valve Kit |      |
|---------------------------|------|
| REF. NO.                  | QTY. |
| 7                         | 12   |
| 8                         | 12   |

| 9910-KIT1904<br>O-Ring Kit |      |
|----------------------------|------|
| REF. NO.                   | QTY. |
| 3                          | 1    |
| 7                          | 12   |
| 14                         | 1    |
| 23                         | 2    |
| 45                         | 1    |
| 51                         | 1    |
| 52                         | 1    |
| 54                         | 1    |

NOTE: When ordering parts, give QUANTITY, PART NUMBER, DESCRIPTION, and COMPLETE PUMP MODEL NUMBER. Reference numbers are used ONLY to identify parts in the drawing and are NOT to be used as order numbers.