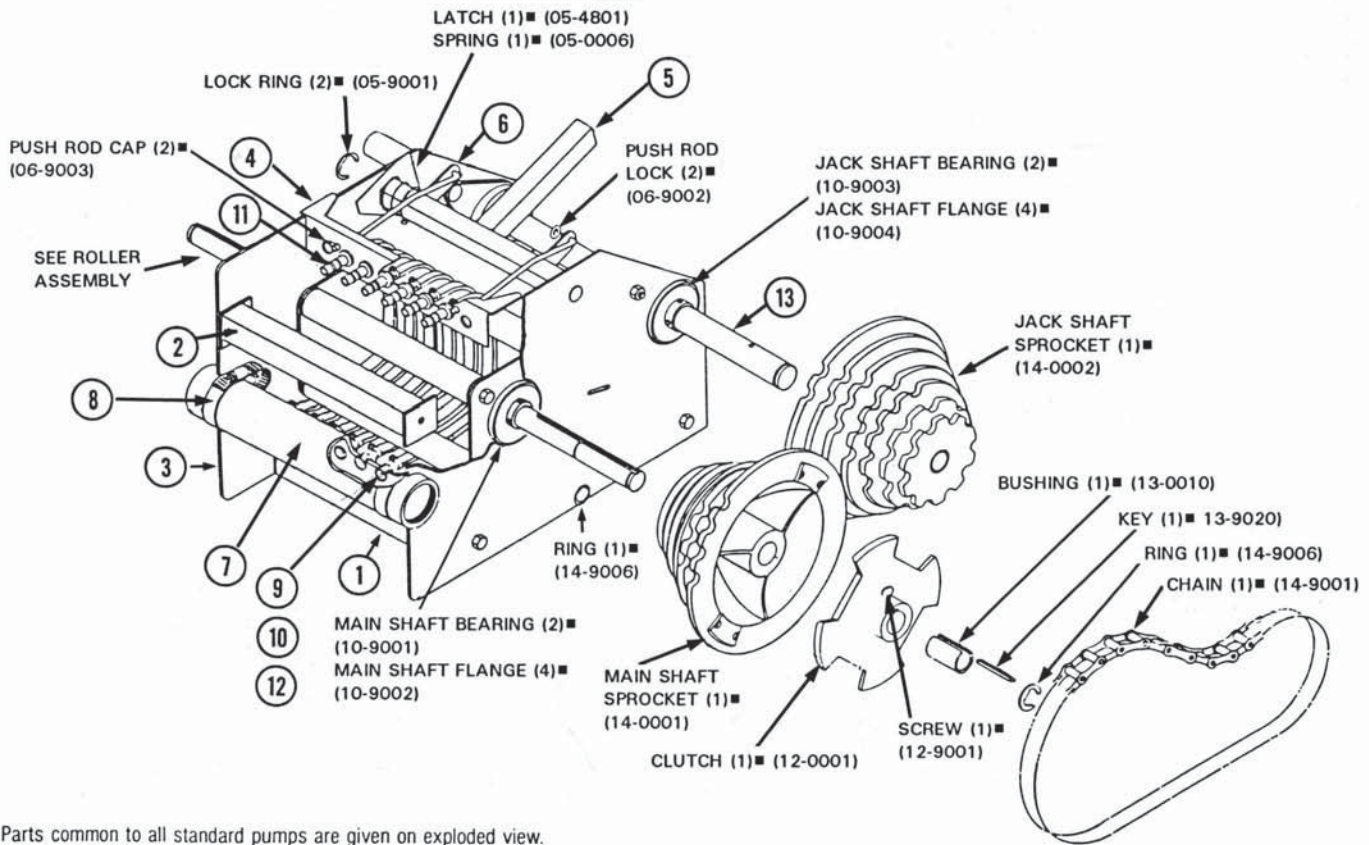


Parts List

Standard Squeeze Tube Pump

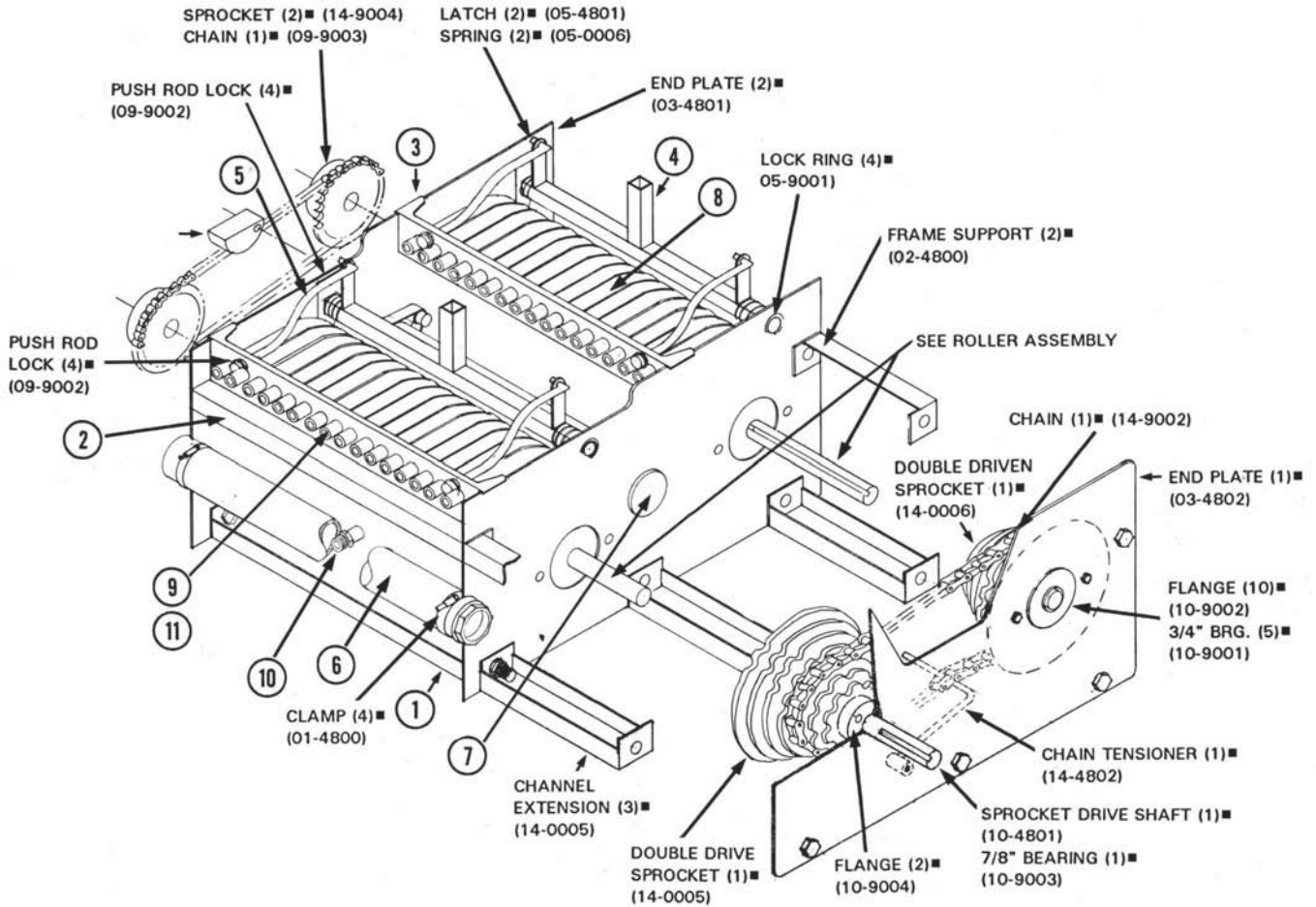


■ Parts common to all standard pumps are given on exploded view.
Number needed for pump shown in parenthesis.

Item #	Description	24B-1	16L	16B-1	12L	12B-1	8L	8B-1
1	Base Channel (2)	01-2410	01-1620	01-1610	01-1220	01-0820	01-0820	01-0810
2	Frame End Support	02-2410	02-1620	02-1610	02-1220	02-0820	02-0820	02-0810
3	Frame End Plate (2)	03-2410	03-2410	03-1610	03-2410	03-1610	03-1610	03-1610
4	Outlet Filling Rack	04-2410	04-1620	04-1610	04-1220	04-1210	04-0820	04-0810
5	Tube Tension Rack	05-2410	05-1620	05-1610	05-1220	05-1210	05-0820	05-0810
6	Push Rod (2)	06-0011	06-0021	06-0011	06-0021	06-0011	06-0021	06-0011
7	Supply Manifold	07-2410	07-1620	07-1610	07-1220	07-1210	07-0820	07-0810
8	Manifold Clamp (2)	07-9002	07-9002	07-9001	07-9002	07-9001	07-9001	07-9001
9	Squeeze Tube"	08-0010	08-0020	08-0010	08-0020	08-0010	08-0020	08-0010
10	Inlet Fitting * Plastic	n/a	08-0021	n/a	08-0021	n/a	08-0021	n/a
	Inlet Fitting * SS	08-0015	n/a	08-0015	n/a	08-0015	n/a	08-0015
11	Outlet Fitting * Plastic	n/a	08-0022	n/a	08-0022	n/a	08-0022	n/a
	Outlet Fitting * SS	08-0013	n/a	08-0013	n/a	08-0013	n/a	08-0013
12	SS Screw Clamps *	08-9003	08-9004	08-9003	08-9004	08-9003	08-9004	08-9003
13	Jack Shaft	10-2411	10-1621	10-1611	10-1221	10-0821	10-0821	10-0811
	Manifold Plug *	08-9001	08-9002	08-9001	08-9002	08-9001	08-9002	08-9001

*Requirements based on number of outlets

Parts List Double Squeeze Tube Pumps

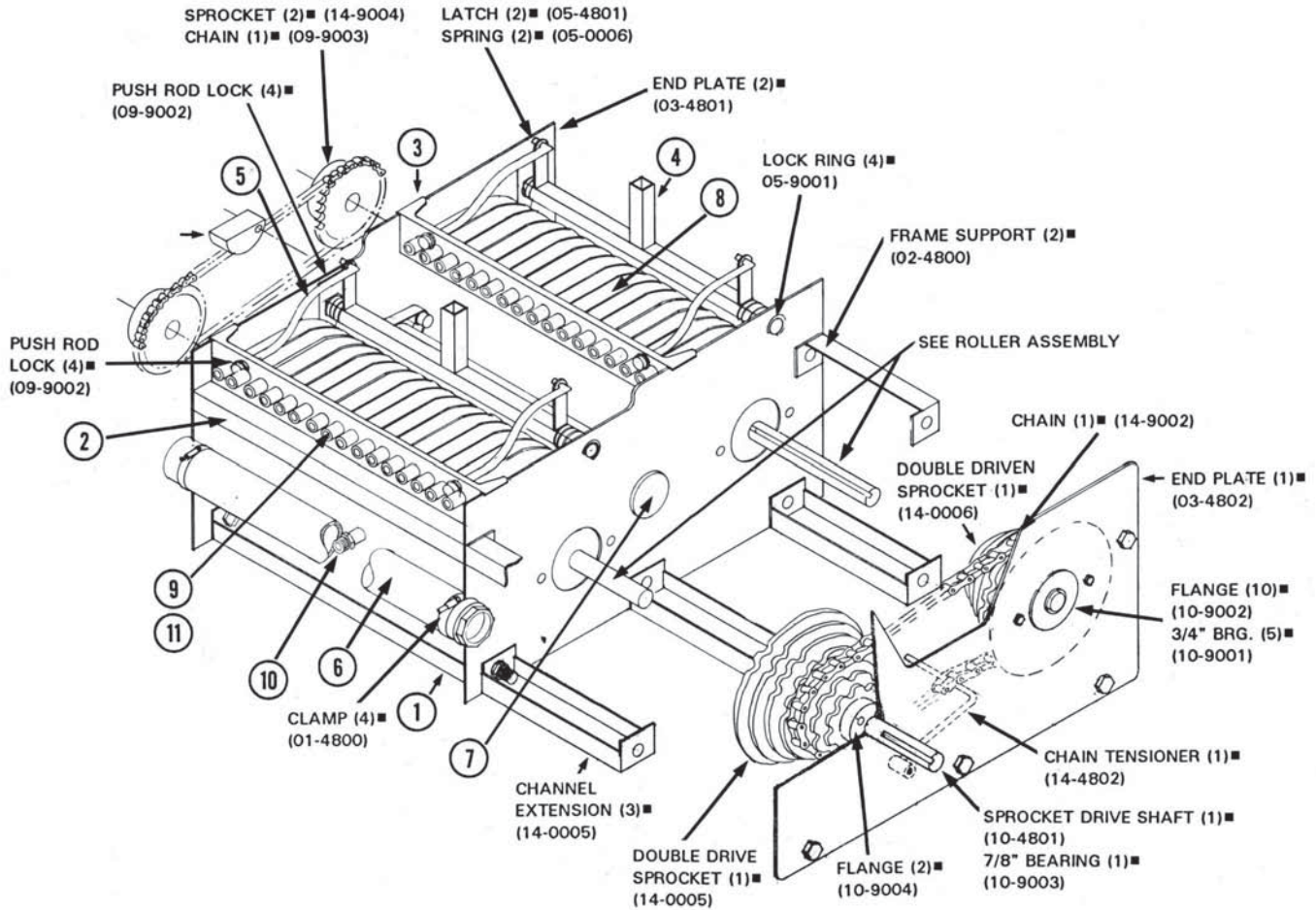


Item #	Description	24LD	32BD-1	40BD-1	48BD-1
1	Base Channel (3)	01-1220	01-1610	01-1620	01-2410
2	Frame Support Bar (2)	02-1220	02-1610	02-1620	02-2410
3	Outlet Fitting Rack (2)	04-1220	04-1610	04-2010	04-2410
4	Tube Tension Bar (2)	05-1220	05-1610	05-2010	05-2410
5	Push Rod (4)	06-0021	06-0011	06-0011	06-0011
6	Manifold - Front	07-1220	07-3211	07-2010	07-2410
7	Manifold - Center	07-2420	07-3212	07-4010	07-4812
8	Squeeze Tube *	08-0020	08-0010	08-0010	08-0010
9	Outlet Fitting * Plastic	08-0022	n/a	n/a	n/a
	Outlet Fitting * SS	n/a	08-0013	08-0013	08-0013
10	Inlet Fitting * Plastic	08-0021	n/a	n/a	n/a
	Inlet Fitting * SS	n/a	08-0015	08-0015	08-0015
11	SS Screw Clamps	08-9004	08-9003	08-9003	08-9003
	Manifold Plug *	08-9002	08-9001	08-9001	08-9001

*Requirements based on number of outlets

Parts List

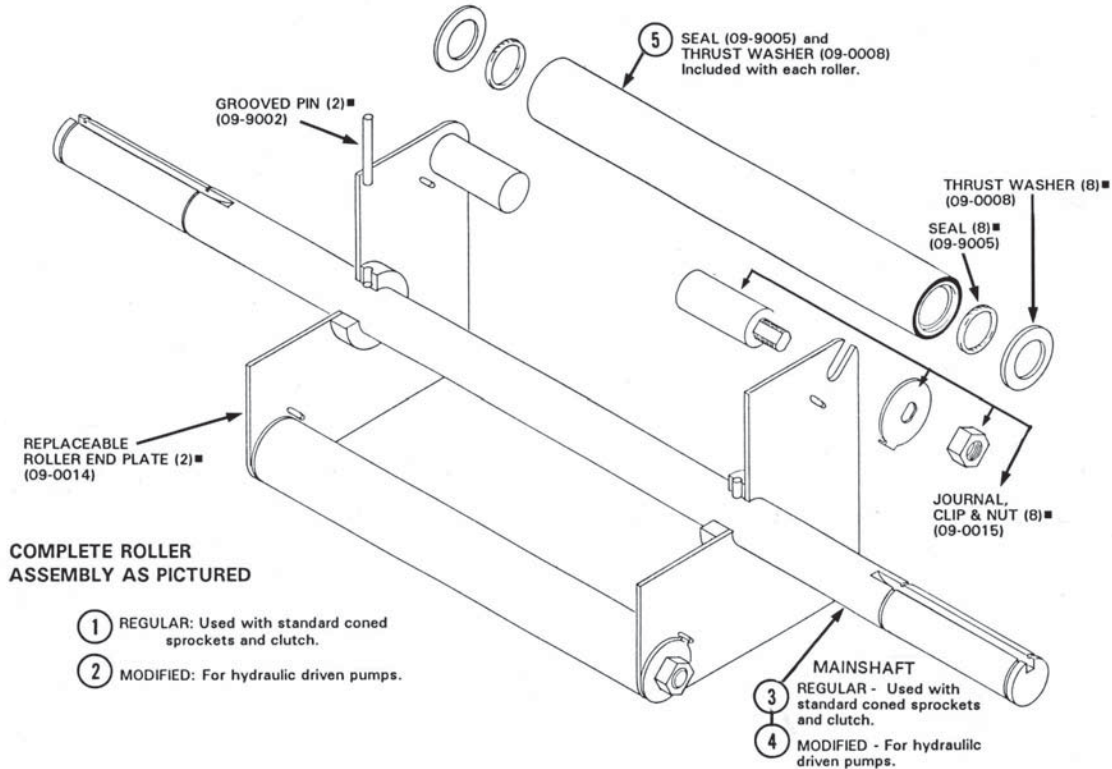
Combination Squeeze Tube Pumps



Item #	Description	8B-1/8L	12B-1/8L
1	Base Channel (3)	01-0820	01-0820
2	Frame Support Bar (2)	02-0820	02-0820
3	Outlet Fitting Rack (2)	8B 04-1210 8L 04-0820	12B 04-1210 8L 04-0820
4	Tube Tension Bar (2)	8B 05-1210 8L 05-0820	12B 05-1210 8L 05-0820
5	Push Rod (4)	8B 06-0011 8L 06-0021	12B 06-0011 8L 06-0021
6	Manifold - Front	07-1611	07-1610
7	Manifold - Center	07-1622	07-1622
8	Squeeze Tube*	B 08-0010 B L 08-0020	08-0010 L 08-0020
9	Outlet Fitting * Outlet Fitting * Plastic	SS B 08-0013 L 08-0022	B 08-0013 L 08-0022
10	Inlet Fitting * SS Inlet Fitting " Plastic	B 08-0015 L 08-0021	B 08-0015 L 08-0021
11	SS Screw Clamps	B 08-9003 L 08-9004	B 08-9003 L 08-9004
	Manifold Plug *	L 08-9002 B 08-9001	L 08-9002 B 08-9001

*Requirements based on number of outlets

Parts List Complete Roller Assembly



Standard Squeeze Tube Pump

Item #	Description	24B-1	6L	16B-1	12L	12B-1	8L	8B-1
1	Regular Roller Assembly	09-2410	09-1620	09-1610	09-1220	09-0820	09-0820	09-0810
2	Modified Roller Assembly	09-2412	09-1622	09-1612	09-1222	09-0822	09-0822	09-0812
3	Regular Mainshaft	10-2410	10-1620	10-1610	10-1220	10-0820	10-0820	10-0810
4	Modified Mainshaft	10-2412	10-1622	10-1612	10-1222	10-0822	10-0822	10-0812
5	Rollers (4)	09-2411	09-1621	09-1611	09-1221	09-0821	09-0821	09-0811

Double and Combination Squeeze Tube Pumps

Item #	Description	24LD		32BD-1		40BD-1		48BD-1	
		Front	Center	Front	Center	Front	Center	Front	Center
1	Regular Roller Assembly	09-2423	09-2424	09-3213	09-3214	09-4010	09-4011	09-4813	09-4814
2	Modified Roller Assembly	09-2423	09-2424	09-3213	09-3214	09-4010	09-4011	09-4810	09-4811
3	Regular Mainshaft	10-2423	10-2424	10-3212	10-3214	10-3223	10-3224	10-4813	10-4814
4	Modified Mainshaft	10-2423	10-2424	10-3212	10-3214	10-3223	10-3224	10-4813	10-4814
5	Rollers (4)	09-1221	09-1221	09-1611	09-1611	09-1621	09-1621	09-2411	09-2411

Item #	Description	8B-1/8L		12B-1/8L	
		Front	Center	Front	Center
1	Regular Roller Assembly	09-1623	09-1624	09-1623	09-1624
2	Modified Roller Assembly	09-1623	09-1624	09-1623	09-1624
3	Regular Mainshaft	10-1623	10-1624	10-1623	10-1624
4	Modified Mainshaft	10-1623	10-1624	10-1623	10-1624
5	Rollers (4)	09-0821	09-0821	09-0821	09-0821