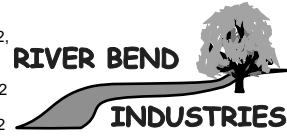
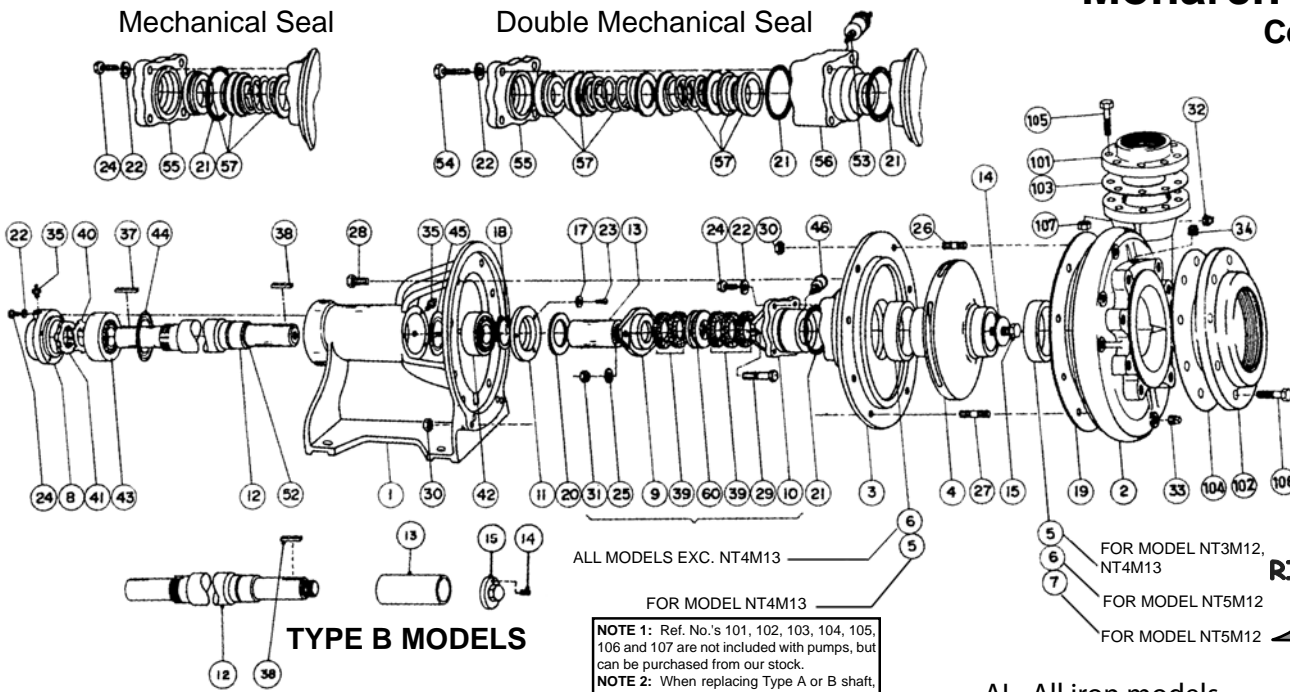


TYPE A MODELS - PART DIFFERENCES AS SHOWN

Monarch NT SERIES

Centrifugal Pumps
(Type A, B & C)

- NT3M12P
- NT3M12S
- NT4M12P
- NT4M12S
- NT4M12DS
- NT4M13P
- NT4M13S
- NT5M12P
- NT5M12S
- NT5M12SAI



Moorhead, MN 56560
218-236-1818
800-365-3070
www.riverbendind.com

NOTE 1: Ref. No.'s 101, 102, 103, 104, 105, 106 and 107 are not included with pumps, but can be purchased from our stock.
NOTE 2: When replacing Type A or B shaft, order Type C shaft, impeller and key.

Ref #	Part No.	Models	Type	Qty.	Description	Ref #	Part No.	Models	Type	Qty.	Description
1	426671	All Models	A,B&C	1	Transmission Head	25	174750	All Models, Pkg.	A & B	2	Plain Washer
2	426531	3M12P, 3M12S	A,B&C	1	Casing	25	174986	All Models, Pkg.	C	2	Plain Washer
2	426601	4M12P, 4M12S	A,B&C	1	Casing	26	170641	All Models	A, B & C	8	Stud
2	426845	NT5M12S-IA	C	1	Casing	27	165251	All Models	A, B & C	8	Stud
2	426845	5M12P, 5M12S	A & B	1	Casing	28	120450	All Models	A & B	8	Bolt
2	426560	4M13P, 4M13S	A, B & C	1	Casing	29	226260	All Models, Pkg.	A & B	2	Bolt
3	426850	All models excl. 4M13	A & B	1	Adapter	30	227850	All Models	A, B & C	16	Hex. Nut
3	426561	4M13P, 4M13S	A, B & C	1	Adapter	31	227830	All Models, Pkg.	A & B	2	Hex. Nut 3/8"
4	426542	3M12P, 3M12S	A, B & C	1	Impeller - 12"	32	185620	All Models	A, B & C	1	Pipe Plug
4	426611	4M12P, 4M13S	A & B	1	Impeller - Full dia. 12.25"	33	185630	All Models	A, B & C	2	Pipe Plug
4	426612	4M12P, 4M12S	C	1	Impeller - 12.25"	34	185640	All Models	A, B & C	2	Pipe Plug
4	426562	4M13P, 4M13S	A & B	1	Impeller - Full dia. 13.50"	35	110680	All Models	A, B & C	2	1/8" NPT Straight Grease Fitting
4	426564	4M13P, 4M13S	C	1	Impeller - 13.5"	37	432160	All Models	C	1	Key
4	426866	5M12P, 5M12S	C	1	Impeller - Full dia. 12.44"	38	432311	All Models	B	1	Key
4	426867	5M12L, 5M12S	A, B & C	1	Trimmed impeller Indicate imp. dia. req'd.	38	432289	All Models	A	1	Key
5	426550	4M13P, 4M13S	A, B & C	2	Wear Ring	39	432260	All Models, Pkg.	A, B & C	5	3/8" x 3/8" Packing
5	426550	3M12P, 3M12S	A, B & C	1	Wear Ring	40	111200	All Models	A, B & C	1	Bearing Lock Washer
5 AI	426551	4M13P, 4M13S	A & B	2	Wear Ring	41	110800	All Models	A, B & C	1	Bearing Lock Nut
5 AI	426551	3M12P, 3M12S	A & B	1	Wear Ring	42	110060	All Models	A, B & C	1	Ball Bearing
5	426630	NT4M12P, NT4M12S	C	1	Wear Ring	43	110109	All Models	A, B & C	1	Ball Bearing
6	426930	3M12P, 3M12S	A & B	1	Wear Ring	44	110012	All Models	A, B & C	1	Nilos Ring
6	426930	5M12P, 5M12S	A, B & C	2	Wear Ring	45	110002	All Models	A, B & C	1	Nilos Ring
6	426930	4M12P, 4M12S	A, B & C	1	Wear Ring	46	110640	All Models, Pkg.	A & B	1	Spring Loaded
6 AI	426931	3M12P, 3M12S	A, B & C	2	Wear Ring	52	198920	All Models	B	1	"O" Ring
6 AI	426931	5M12P, 5M12S	A & B	2	Wear Ring	53	110650	All Models, DMS	A & B	1	Spring Loaded
6 AI	426931	4M12P, 4M12S	A & B	1	Wear Ring	54	120110	All Models, DMS	A, B & C	4	Bolt
7	426630	4M12P, 4M12S	A & B	1	Wear Ring	55	400257	All Models, MS	A, B & C	1	Seal Seat Cover
7 AI	426631	4M12P, 4M12S	A, B & C	1	Wear Ring	56	400258	All Models, DMS	A, B & C	1	Seal Box
8	426563	All Models	A, B & C	1	End Cover	57	240120	All Models, MS	A, B & C	1	Mech. Seal (for double seal use 2-MS12)
9	426620	All Models	A, B & C	1	Split Water Gland NLA	57 AI	240364	All Models, MS	A, B & C	1	Mech. Seal
9 AI	426621	All Models	A & B	1	Split Water Gland	60	430501	All Models, Pkg.	A & B	1	Lantern Ring
10	426900	All Models	A, B & C	1	Stuffing Box	101	400750	3M12	A & B	1	Flange
11	468590	All Models	A, B & C	1	Cover	101	400760	4M12, 4M13	A & B	1	Flange
12	426873	All Models	C	1	Shaft	101	400770	5M12	A & B	1	Flange
12	See 2 & 3	All Models	A & B	1	Shaft	102	400760	3M12	A & B	1	Flange
13	400354	All Models	B	1	Sleeve	102	400770	4M12, 4M13	A & B	1	Flange
13	400253	All Models	A	1	Sleeve	102	400780	5M12	A & B	1	Flange
13	400254	All Models	C	1	Sleeve	102	400780	5M12	A & B	1	Flange
13 AI	400296	All Models	A	1	Sleeve	103	190910	3M12	A & B	1	Gasket
14	400104	All Models	B & C	1	Washer	103	191910	4M12, 4M13	A & B	1	Gasket
14	152090	All Models	A	1	Set Screw	103	191930	5M12	A & B	1	Gasket
15	125795	All Models	C	1	Bolt 1/2 UNC x 1 1/4 SST	104	191910	3M12	A & B	1	Gasket
15	226641	All Models	B	1	Locking Bolt	104	191940	4M12, 4M13	A & B	1	Gasket
15	426890	All Models	A	1	Impeller Nut	104	191930	5M12	A & B	1	Gasket
17	176520	All Models	A, B & C	3	Spring Washer	105	125070	3M12	A & B	4	Bolt
18	138100	All Models	A, B & C	1	Retain Ring	105	125070	4M12, 4M13	A & B	8	Bolt
19	191915	4M13P, 4M13S	A, B & C	1	Gasket	105	125280	5M12	A & B	8	Bolt
19	191920	All models excl. 4M13	A, B & C	1	Gasket	105	189730	All Models, Pkg.	C	1	1/4" Street Tee
20	191950	All Models	A, B & C	1	Flinger	106	125040	3M12	A & B	8	Bolt
21	198740	All Models	A, B & C	1	"O" Ring	106	125240	4M12, 4M13	A & B	8	Bolt
21	198740	All Models, DMS	A, B & C	2	"O" Ring	106	125250	5M12	A & B	8	Bolt
22	176540	All Models	A, B & C	7	Spring Washer	107	128470	3M12	A & B	4	Hex. Nut
23	147360	All Models	A & B	3	Screw	107	128470	4M12, 4M13	A & B	8	Hex. Nut
24	120020	All Models	A, B & C	7	Bolt	107	128490	5M12	A & B	8	Hex. Nut

AI - All iron models.

MECHANICAL SEAL

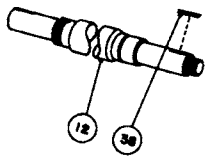
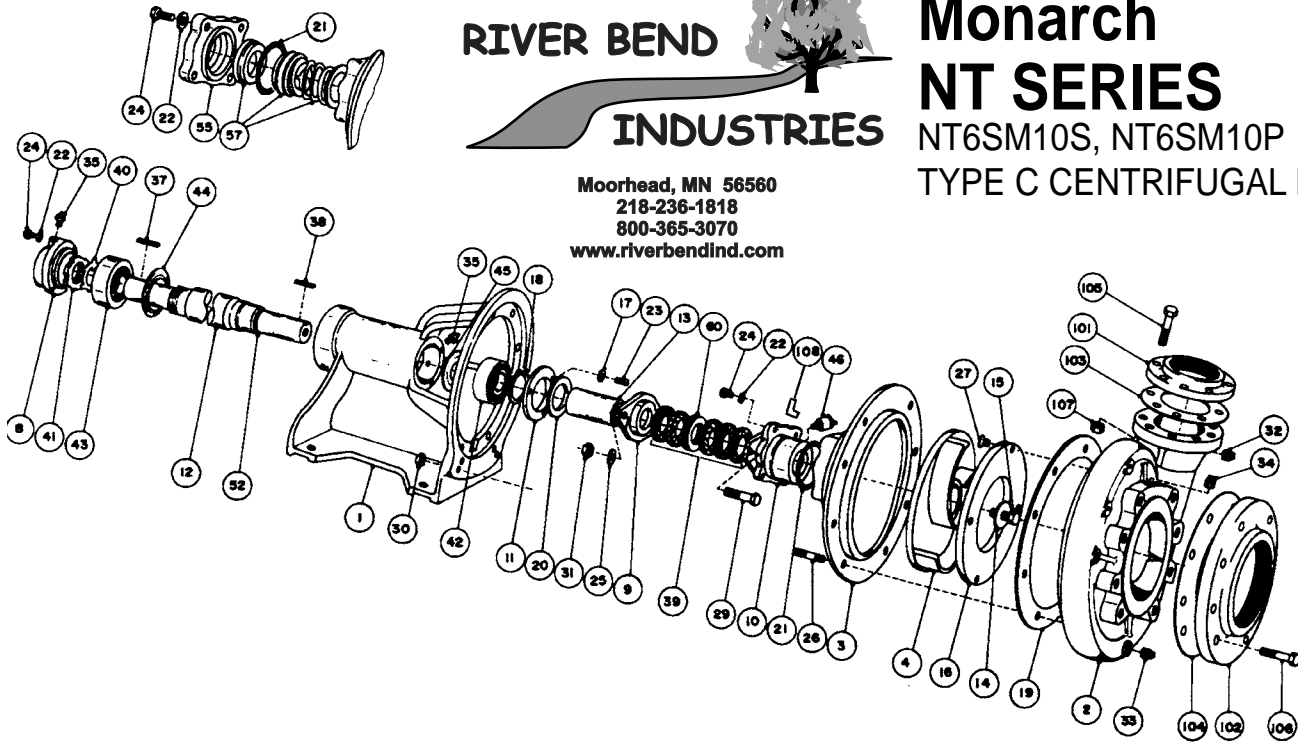
RIVER BEND INDUSTRIES



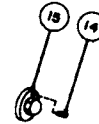
Monarch NT SERIES

NT6SM10S, NT6SM10P
TYPE C CENTRIFUGAL PUMPS

Moorhead, MN 56560
218-236-1818
800-365-3070
www.riverbendind.com



IMPORTANT: When ordering parts, specify model, type, code and part number.
*Suggested parts to stock.



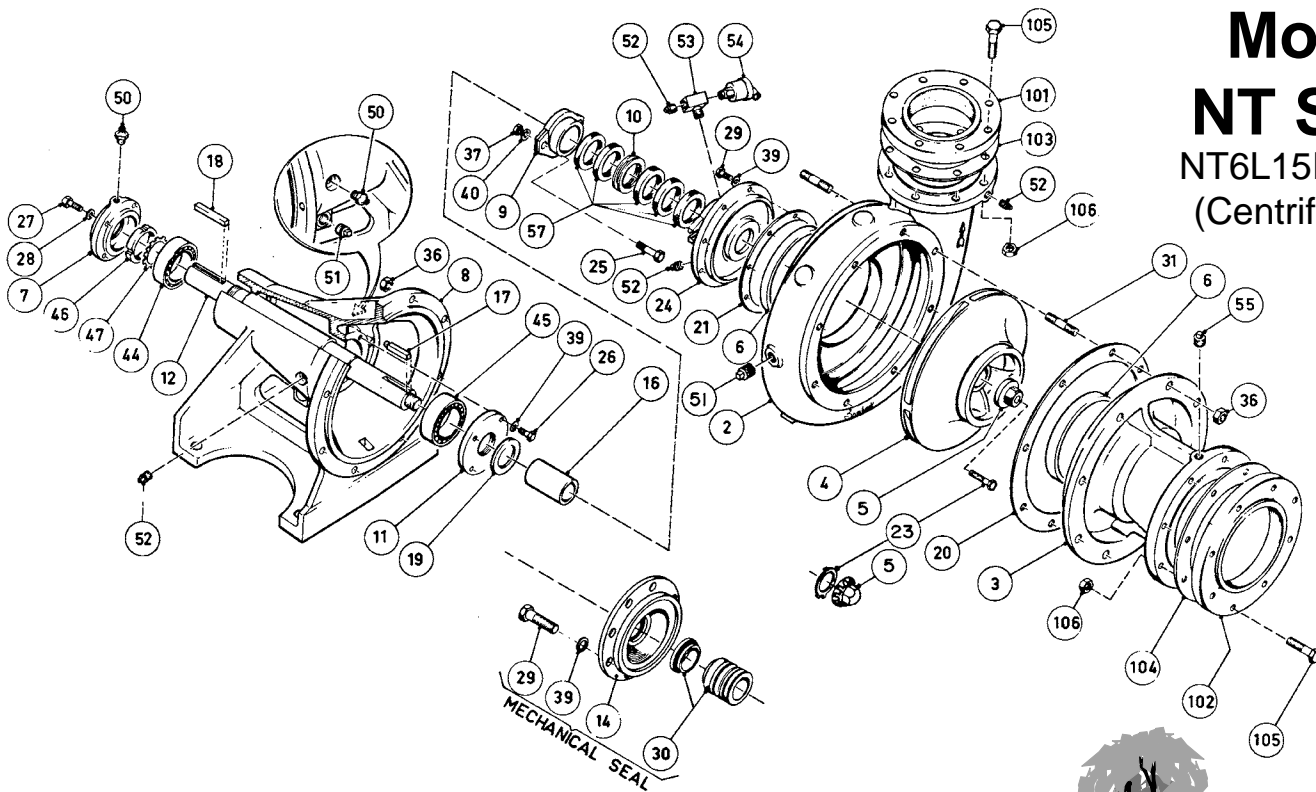
- NOTE 1:** When ordering trimmed impellers, specify trimmed diameter smaller than full diameter 10.00 inches.
NOTE 2: Ref. No.'s 101, 102, 103, 104, 105, 106 & 107 are not included with pumps, but can be purchased from our stock.

A = NT6SM10S B = NT6SM10P

Ref.#	Code #	A	B	Description
1	426671	1	1	Transmission head
2	425845	1	1	Casing
3	425855	1	1	Adapter
4	425870	1	1	Impeller - Full dia. 10"
		1	1	Trimmed impeller (See note 1)
8	426563	1	1	End cover
9	426620		1	Split water gland Bronze NLA
	426621		1	Split water gland Ductile Iron
10	426900		1	Stuffing box
11	468590	1	1	Cover
12	426873	1	1	Shaft
13	400254	1	1	Sleeve
14	400104	1	1	Washer 1-7/8 Dia.
15	125795	1	1	Locking bolt 1/2 UNC x 1-1/4
16	425880	1	1	Wear plate
17	176520	3	3	Spring washer 1/4
18	138100	1	1	Retaining ring
19	191850	1	1	Gasket 13.50 x 8.50 x 0.03
20	191950	1	1	Slinger 3.0 x 1.72 x 0.19
21	198740	1	1	O-Ring 4 x 4-1/4
22	176540	7	7	Spring washer 3/8
23	147360	3	3	Machine screw 1/4 UNC x 3/4
24	120020	7	7	Bolt 3/8 UNC x 1-1/4
25	174986		2	Plain washer 3/8 I.D.
26	165260	8	8	Stud 1/2 UNC x 2 1/4
27	143980	4	4	Machine screw 3/8 UNC x 3/4
29	226260		2	Bolt 3/8 UNC x 2 1/4 ZN PL
30	128250	8	8	Hex. Nut 1/2 UNC

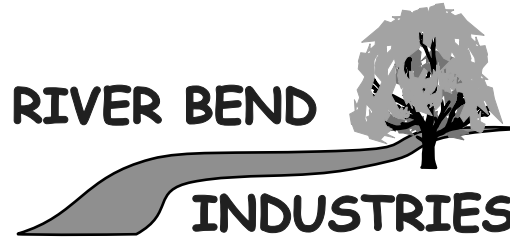
Ref.#	Code #	A	B	Description
31	227830		2	Hex. Nut 3/8 UNC ZN PL
32	185620	2	2	Pipe plug 1/4 NPTF
33	185630	3	3	Pipe plug 3/8 NPTF
34	185650	2	2	Pipe plug 3/4 NPTF
35	110680	2	2	1/8 NPT Str. grease fitting
37	432160	1	1	Key 3/8 x 3
38	432311	1	1	Key 5/16 x 2.15
39	432260		5	3/8 x 3/8 Packing
40	111200	1	1	Bearing lock washer
41	110800	1	1	Bearing lock nut
42	110060	1	1	Ball bearing
43	110109	1	1	Ball bearing
44	110012	1	1	Nilos ring
45	110002	1	1	Nilos ring
46	110640		1	Grease cup
52	198010	1	1	O-Ring 1 1/8 x 1 1/4
55	400257	1		Seal cover
57	240120	1		Mechanical seal
60	430501		1	Lantern ring bronze
101	400780	1	1	Flange CF6
102	400780	1	1	Flange CF6
103	191930	1	1	Gasket 11.0 x 6.25 x 0.03
104	191930	1	1	Gasket 11.0 x 6.25 x 0.03
105	227280	8	8	Bolt 3/4 UNC x 2 ZN PL
106	227240	8	8	Bolt 3/4 UNC x 2 ZN PL
107	227890	8	8	Hex. Nut 3/4 ZN PL
108	189730		1	Street Elbow

Monarch NT SERIES NT6L15P & NT6L15S (Centrifugal Pumps)



Note: Previous NT6L15P pump assemblies utilized an impeller nut with locking washer and shorter key. Replacement parts are:

Ref.#	Code #	Description
5	466050	Impeller Nut
17	466170	Key, Part No. 206 - 17
23	175630	Locking Washer, Parts No. 206 -23



Moorhead, MN 56560
218-236-1818
800-365-3070
www.riverbendind.com

A - NT6L15P B - NT6L15S

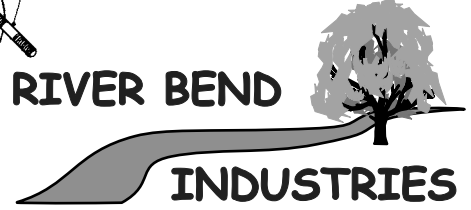
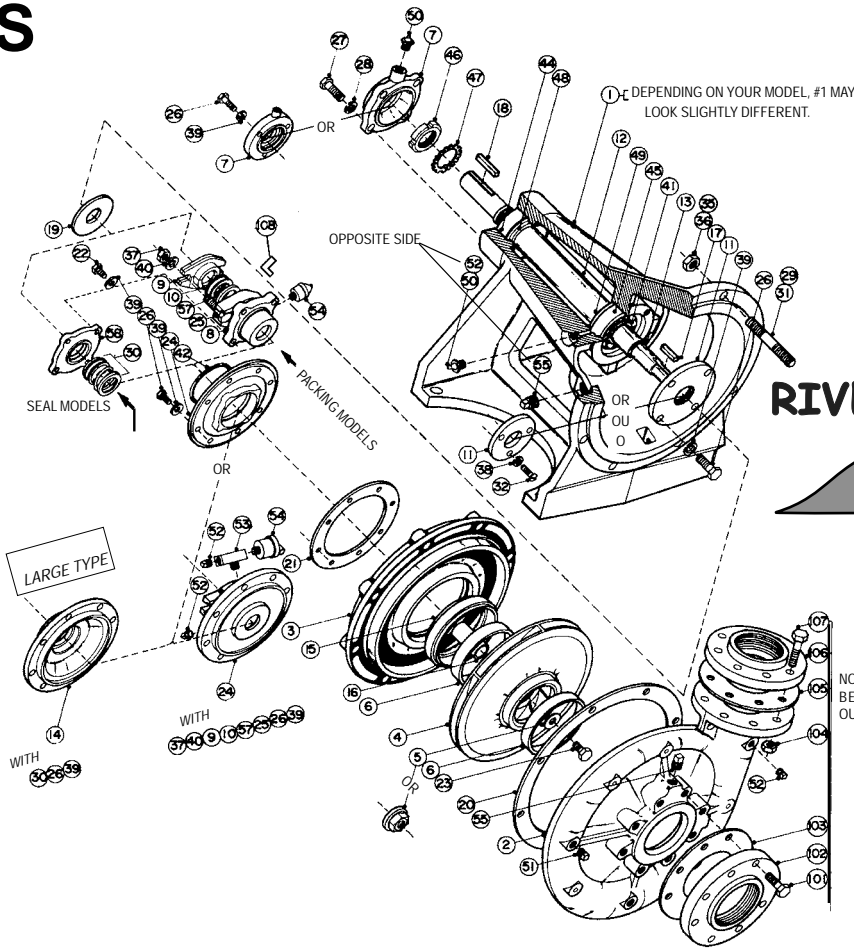
Ref.#	Code #	A	B	Description
2	466010	1	1	Casing
3	466030	1	1	Suction Cover
4	466040	1	1	Impeller
5	466049	1	1	Impeller Nut
6*	466060	2	2	Wear Ring
7	466071	1	1	Bearing Cover
8	466019	1	1	Transmission Head
9*	466090	1		Gland Set
10*	466100	1		Lantern Seat
11	466111	1	1	Seal Cover
12	466121	1	1	Shaft
14	466116		1	Seal Cover
16	466160	1	1	Sleeve
17	466171	1	1	Key
18	466221	1	1	Key, 1/2 sq. x 3 1/8
19	191951	1	1	Flinger
20*	194150	1	1	Gasket
21*	194400	1	1	Gasket
23*	226651	1	1	Bolt, 1/2 UNC x 1 1/2
24*	466150	1		Packing Cover
25	226480	2		Bolt, 7/16 UNC x 2 1/2
26	120020	4	4	Bolt, 3/8 UNC x 1 1/4
27	120440	4	4	Bolt, 1/2 UNC x 1 1/4
29	120010	8	8	Bolt, 3/8 UNC x 1

Ref.#	Code #	A	B	Description
28	176560	4	4	Spring Washer, 1/2
30*	240363		1	Mechanical Seal, 2 1/2 ø, MS-63
31	165860	16	16	Stud, 5/8 UNC x 2 1/4
36	128270	16	16	Nut, 5/8 UNC
37	227840	2		Nut, 7/16 UNC
39	176540	12	12	Spring Washer, 3/8
40	174993	2		Plain Washer, 7/16
44*	110401	1	1	Ball Bearing, #3312/C3
45*	110400	1	1	Ball Bearing, #3212A/C3
46*	110830	1	1	Bearing Locknut, #N12
47*	111230	1	1	Bearing Lock Washer, #W12
50*	110700	2	2	Grease Fitting, 1/4 NPT Straight
51	185640	3	3	Pipe Plug, 1/2 NPT
52	185620	5	3	Pipe Plug, 1/4 NPT
53	200690	1		Male Branch Tee 3600 x 4
54*	110650	1		Grease Cup #0, 1/4 NPT
55	185650	1	1	Pipe Plug, Black 3/4 NPT
57*	465980	5		Packing, 3/8 x 3/8
101	400780	1	1	Flange
102	400790	1	1	Flange
103	191930	1	1	Gasket
104	191840	1	1	Gasket
105	125280	16	16	Bolt, 3/4 UNC x 3
106	128490	16	16	Nut, 3/4 UNC

*Formerly known as 206TP

NT SERIES

- NT4L15P
- NT4L15S
- NT5L15P
- NT5L15S
- NT5LR15P
- NT5LR15S



Moorhead, MN 56560
 218-236-1818
 800-365-3070
www.riverbendind.com

NOT INCLUDED BUT CAN
 BE PURCHASED FROM
 OUR STOCK.

SMALLER MODELS:

- A) NT4L15P
- B) NT4L15S
- E) NT5LR15P
- F) NT5LR15S

LARGER MODELS:

- C) NT5L15P
- D) NT5L15S

IMPORTANT:

When ordering parts, specify model, type and code no.
 When ordering "trimmed impellers", indicate impeller diameter.
 *Suggested parts to stock.
 NOTE 1 - Specify trim size.
 NOTE 2 - Bronze, I.D. - .020 smaller.
 NOTE 3 - For other than water applications, contact factory.

Ref #	Part #	A	B	C	D	E	F	Description
1	466019			1	1			Transmission head
1	426671	1	1			1	1	Transmission head
2	400520			1	1	1	1	Casing 5 x 6
2	400519	1	1					Casing 4 x 5
3	400534	1	1			1	1	Seal plate (205)
3	400533			1	1			Seal plate (206)
4	400541	1	1					Impeller 15.10 Dia.
4	400525					1	1	Impeller 15.09 Dia.
4	400522			1	1			Impeller 15.09 Dia.
4	See note 1							Trimmed Impellers
5	466049			1	1			Impeller nut
5	400104	1	1			1	1	Steel washer 1-7/8
6	400538	2	2					Wear ring - Bronze
6	400530			2	2	2	2	Wear ring - Bronze
6	400539	2	2					Wear ring - Ductile iron
6	400531			2	2	2	2	Wear ring - Ductile iron
6	400408	2	2					Wear ring - Bronze oversized
6	400407			2	2	2	2	Wear ring - Bronze oversized
7	466071			1	1			Bearing cover
7	426563	1	1			1	1	Bearing cover
8	426900	1					1	Stuffing box
9	466090			1				Gland set
9	426620	1				1		Gland set, Bronze NLA
9	426621	1				1		Gland set, Ductile Iron
10	466100			1				Lantern ring
10	430501	1					1	Lantern ring
11	468590	1	1			1	1	Bearing cover
11	466111			1	1			Bearing cover
12	466121			1	1			Shaft
12	426873	1	1			1	1	Shaft
13	198010	1	1			1	1	"O"-Ring
14	466116			1				Seal cover
15	400537	1	1					Insert ring
16	466160			1	1			Sleeve
16	400254	1	1			1	1	Sleeve
17	466171			1	1			Key
17	432311	1	1			1	1	Key
18	466221			1	1			Key
18	432160	1	1			1	1	Key
19	191951			1	1			Flinger
19	191950	1	1			1	1	Flinger
20	190852	1	1	1	1	1	1	Gasket
21	194400			1	1			Gasket
21	190853	1	1			1	1	Gasket
22	120020	7	7	4	4	7	7	Bolt 3/8 UNC x 1-1/4
23	226651			1	1			Bolt 1/2 UNC x 1-1/2
23	125795	1	1			1	1	Bolt 1/2 UNC x 1-1/4
24	400535	1	1			1	1	Seal/Packing cover
24	466150			1				Packing cover
25	226480			2				Bolt 7/16 UNC x 2-1/2
25	226260	2				2		Bolt 3/8 UNC x 2 -1/4
26	120010	8	8	8	8	8	8	Bolt 3/8 UNC x 1
27	120440			4	4			Bolt 1/2 UNC x 1-1/4
28	176560			4	4			Spring washer

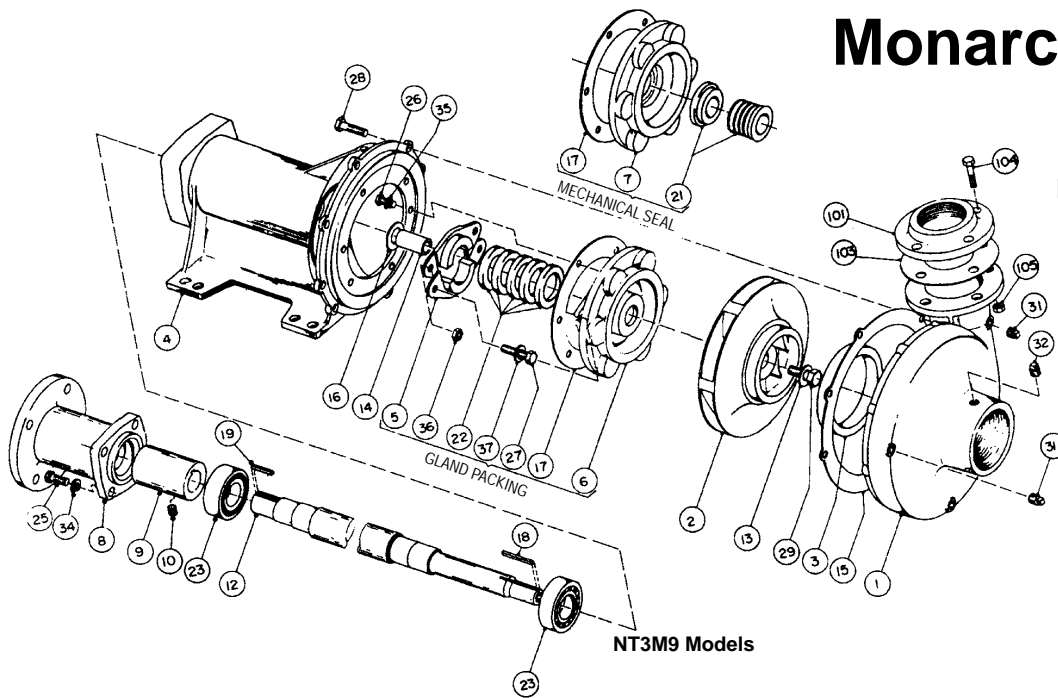
Ref #	Part #	A	B	C	D	E	F	Description
29	165251	8	8			8	8	Stud 1/2 UNC x 2
30	240363				1			Seal MS63 (Note 3)
30	240120			1			1	Seal MS12 (Note 3)
31	165921			8	8			Stud 5/8 UNC x 3-3/4
31	165890	8	8			8	8	Stud 5/8 UNC x 3
32	147360	3	3			3	3	Screw 1/4 UNC x 3/4
35	227850	8	8			8	8	Nut Y2 UNC
36	128270	8	8	8	8	8	8	Nut 5/8 UNC
37	227840			2				Nut 7/16 UNC
37	227830	2				2		Nut 3/8 UNC
38	176520	3	3			3	3	Spring washer 1/4
39	6540	15	15	12	12	15	15	Spring washer 3/8
40	174993			2				Washer 7/16
40	174986	2				2		Washer 3/8
41	138100	1	1			1	1	Snap ring
42	198740	1	1			1	1	"O"-Ring
44	110401			1	1			Ball bearing 3312/C3
44	110109	1	1			1	1	Ball bearing 5309
45	110400			1	1			Ball bearing 3212/C3
45	110060	1	1			1	1	Ball bearing 3209
46	110830			1	1			Bearing lock nut N12
46	110800	1	1			1	1	Bearing lock nut N09
47	111230			1	1			Bearing lock washer W12
47	111200	1	1			1	1	Bearing lock washer W09
48	110012	1	1			1	1	Nilos ring 3309JV
49	110002	1	1			1	1	Nilos ring 3309AV
50	110700			2	2			Grease fitting 1/4 NPT
50	110680	2	2			2	2	Grease fitting 1/8 NPT
51	185630	2	2	2	2	2	2	Pipe plug 3/8 NPT
52	185620	2	2	5	3	2	2	Pipe plug 1/4 NPT
53	200690			1				Tee
54	110650			1				Grease cup
54	110640	1				1		Grease cup
55	185640	2	2	3	3	2	2	Pipe plug 1/2 NPT
57	465980			5				Packing
57	432260	5				5		Packing
58	400257			1			1	Seal cover
101	227240	8	8			8	8	Bolt 3/4 UNC x 2
101	227250			8	8			Bolt 3/4 UNC x 2
102	400770	1	1			1	1	Flange
102	400780			1	1			Flange
103	191940	1	1			1	1	Gasket
103	191930			1	1			Gasket
104	227870	8	8			8	8	Nut 5/8 UNC
104	227890			8	8			Nut 3/4 UNC
105	191910	1	1			1	1	Gasket
105	191940			1	1			Gasket
106	400760	1	1			1	1	Flange
106	400770			1	1			Flange
107	227070	8	8			8	8	Bolt 5/8 UNC x 2 Y2
107	227280			8	8			Bolt 3/4 UNC x 3
108	189730	1				1		Fitting Elbow

Monarch NT-H SERIES

Centrifugal Pumps

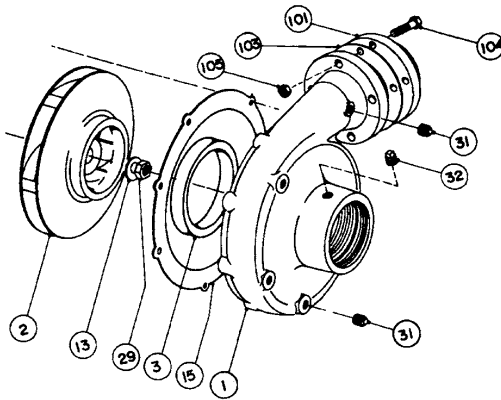
(Type D, E & F)

NT3M9S-H, NT3M9P-H, NT3M9S-HCCW
NT3M9P-HCCW

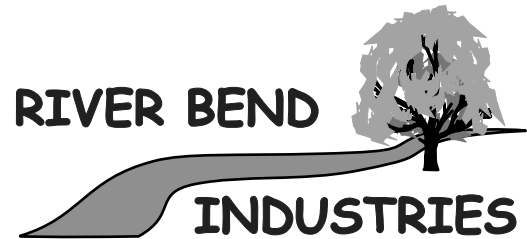


HCCW* Models

*Counter Clockwise Rotation
(Viewed from Driver End)



A = NT3M9P-H
B = NT3M9S-H
C = NT3M9P-HCCW
D = NT3M9S-HCCW



Moorhead, MN 56560
218-236-1818
800-365-3070
www.riverbendind.com

Ref.#	Code #	A	B	C	D	Description
1	400260	1	1			Casing
1	400259			1	1	Casing
2	400241	1	1			Impeller 9" Type D
2	400273	1	1			Impeller -Full dia. 9"
2	-	1	1			Trimmed impeller (see note 1)
2	400205			1	1	Impeller 9" Type E
2	400281			1	1	Impeller CCW - full dia. 9" NLA
2	-			1	1	Trimmed impeller CCW (see note 1)
3	190121	1	1	1	1	Wear ring
3AI	400123	1	1	1	1	Wear ring
4	400202	1	1	1	1	Transmiss
5	400203	1		1		Water gland set split
5 AI	400204	1		1		Water gland set split
6	400206	1		1		Packing cover
7	400418		1		1	Seal cover
8	426215	1	1	1	1	Adapter
9	426216	1	1	1	1	Coupling
10	148380	1	1	1	1	Set screw
12	-	1	1			Shaft Type D (see note 3)
12	400246	1	1		1	Shaft type E
12	-			1	1	Shaft type E (CCW) (see note 3)
12	400274		1	1	1	Shaft type F (CCW)
13	400199	1	1	1	1	Washer type D
13	400279			1	1	Washer type E
14*	400208	1	1	1	1	Sleeve
14AI	400295	1	1	1	1	Sleeve
15*	190838	1	1	1	1	Gasket
16*	190849	1	1	1	1	Flinger

Ref.#	Code #	A	B	C	D	Description
17*	190851	1	1	1	1	Gasket
18	438085	1	1	1	1	Key
19	432070	1	1	1	1	Key
21*	240090		1		1	Mechanical seal
21AI	240362		1		1	Mechanical seal
22*	432560	5		5		Packing ring
23*	110245	2	2	2	2	Ball bearing
25	120450	4	4	4	4	Bolt
26	119780	6	6	6	6	Bolt
27	120050			2		Bolt
28	120238	8	8	8	8	Bolt
29*	226421	1	1	1	1	Bolt type D
29*	130655			1	1	Nut type E
31	185620	3	3	3	3	Pipe plug
32	185640	2	2	2	2	Pipe plug
34	176560	4	4	4	4	Spring washer
35	176530	6	6	6	6	Spring washer
36	128230			2		Nut
37	174450	2		2		Washer
101	400750	1	1	1	1	Flange (see note 2)
103	190910	1	1	1	1	Gasket (see note 2)
104	125070	4	4	4	4	Bolt (see note 2)
105	128470	4	4	4	4	Nut (see note 2)

IMPORTANT: When ordering parts, specify model, type and code number.
*Suggested parts to stock.

NOTE 1 - Indicate impeller diameter required.

NOTE 2 - Ref. No.'s 101, 103, 104 & 105 are not included in the pump, but may be purchased from our stock.

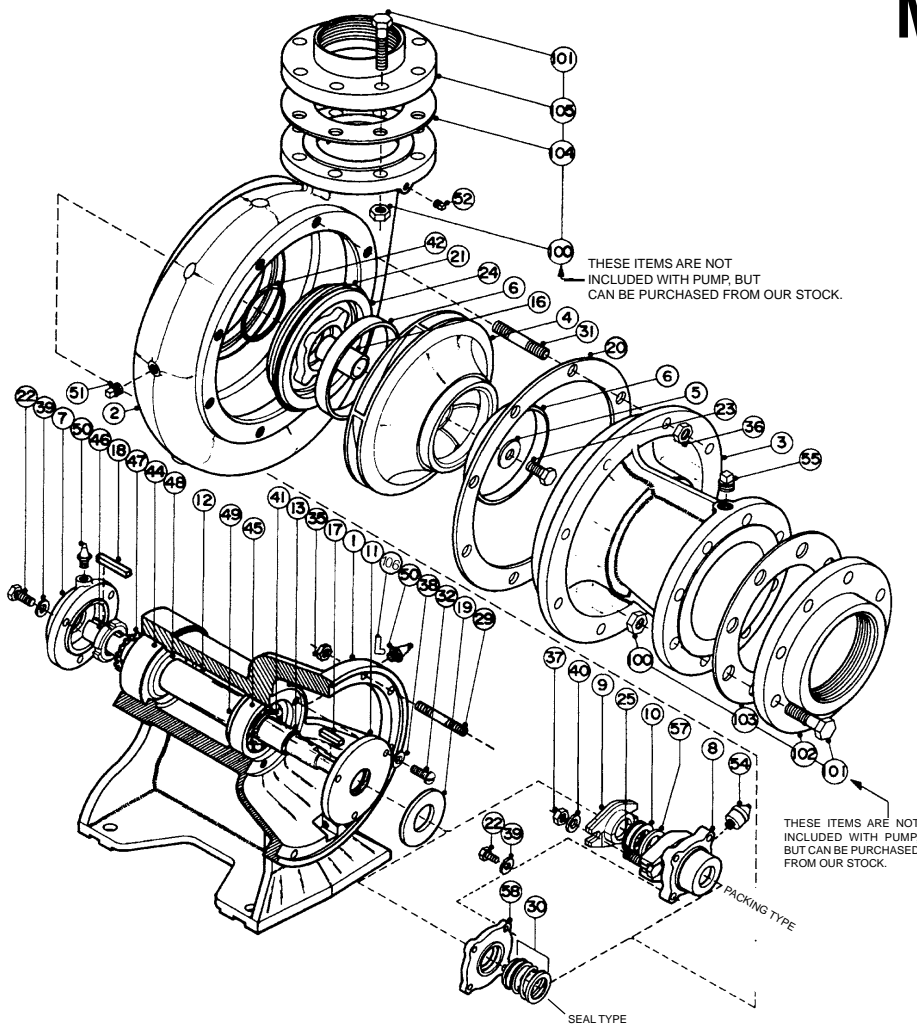
NOTE 3 - When replacing Type D shaft (ECCW), order Type D (ECCW) shaft, impeller and key.

AI - All iron models.

Monarch NT SERIES

NT6LR15P & NT6LR15S

(No Type & Type A)



Ref.#	Code #	NT6LR15P	NT6LR15S	Description
1	426671	1	1	Transmission Head
2	466011	1	1	Casing, 6 x 8
3	466030	1	1	Suction Adapter
3	466042	1	1	Impeller
4	466048	1	1	Impeller, 15.5" Dia.
4	-	1	1	Trimmed impeller (Note 1)
5	400104	1	1	Washer
6	466060	2	2	Wear ring, bronze
6	466061	2	2	Wear ring, ductile iron
*6	400406	2	2	Oversize wear ring (Note 2)
7	426563	1	1	Bearing cover
8	426900	1		Stuf
9	426620	1		Gland set, Bronze NLA
9	426621	1		Gland set, Ductile Iron
10	430501	1		Lantern ring
11	468590	1	1	Bearing cover
12	-	1	1	Shaft (see note 4)
12	426873	1	1	Shaft
*13	198010	1	1	O-Ring
16	400254	1	1	Sleeve
17	432110	1	1	Key (No Type)
*17	432311	1	1	Key Type A
*18	432160	1	1	Key
*19	191950	1	1	Flinger
*20	194150	1	1	Gasket
21	198184	1	1	O-Ring
22	120020	4	4	Bolt 3/8 UNC x 1-1/4
*23	125795	1	1	Bolt 1/2 UNC x 1-1/4
24	400550	1	1	Seal/Packing adapter
25	226260	2		Bolt 3/8 UNC x 2-1/4
29	165250	8	8	Stud 1/2 UNC x 2
30	240120		1	Seal - MS12 (Note 3)
31	165860	8	8	Stud 5/8 UNC x 2-1/4
32	147360	3	3	Screw 1/4 UNC x 3/4
35	128250	8	8	Nut 1/2 UNC
36	128270	8	8	Nut 5/8 UNC
37	227830	2		Nut 3/8 UNC
38	176520	3	3	Spring washer 1/4 I.D.
39	176540	7	7	Spring washer 3/8 I.D.
40	174986	2		Washer 3/8
41	138100	1	1	Retain ring
42	198740	1	1	O-Ring
44	110109	1	1	Ball bearing, 3309
45	110060	1	1	Ball bearing, 3209
46	110800	1	1	Bearing lock nut, NO9
47	111200	1	1	Bearing lock washer, W09
48	110012	1	1	Nilos ring, 3309JV
49	110002	1	1	Nilos ring, 3209AV
50	110680	2	2	Grease
51	185640	2	2	Pipe plug 1/2 NPTF
52	185620	2	2	Pipe plug 1/4 NPTF
54	110640	1		Grease cup 1/4 NPT
55	185650	1	1	Pipe plug 3/4 NPTF
*57	432260	5		Packing
58	400257		1	Seal cover
100	128490	16	16	Nut 3/4 UNC
101	125280	16	16	Bolt 3/4 UNC x 3
102	400790	1	1	Flange
103	191840	1	1	Gasket
104	191930	1	1	Gasket
105	400780	1	1	Flange
106	189730	1		Fitting Elbow

RIVER BEND



INDUSTRIES

Moorhead, MN 56560

218-236-1818

800-365-3070

www.riverbendind.com

IMPORTANT: When ordering parts, specify model, type and code number.

***Suggested parts to stock.**

NOTE 1 - Specify trim size (less than 15.5" dia.).

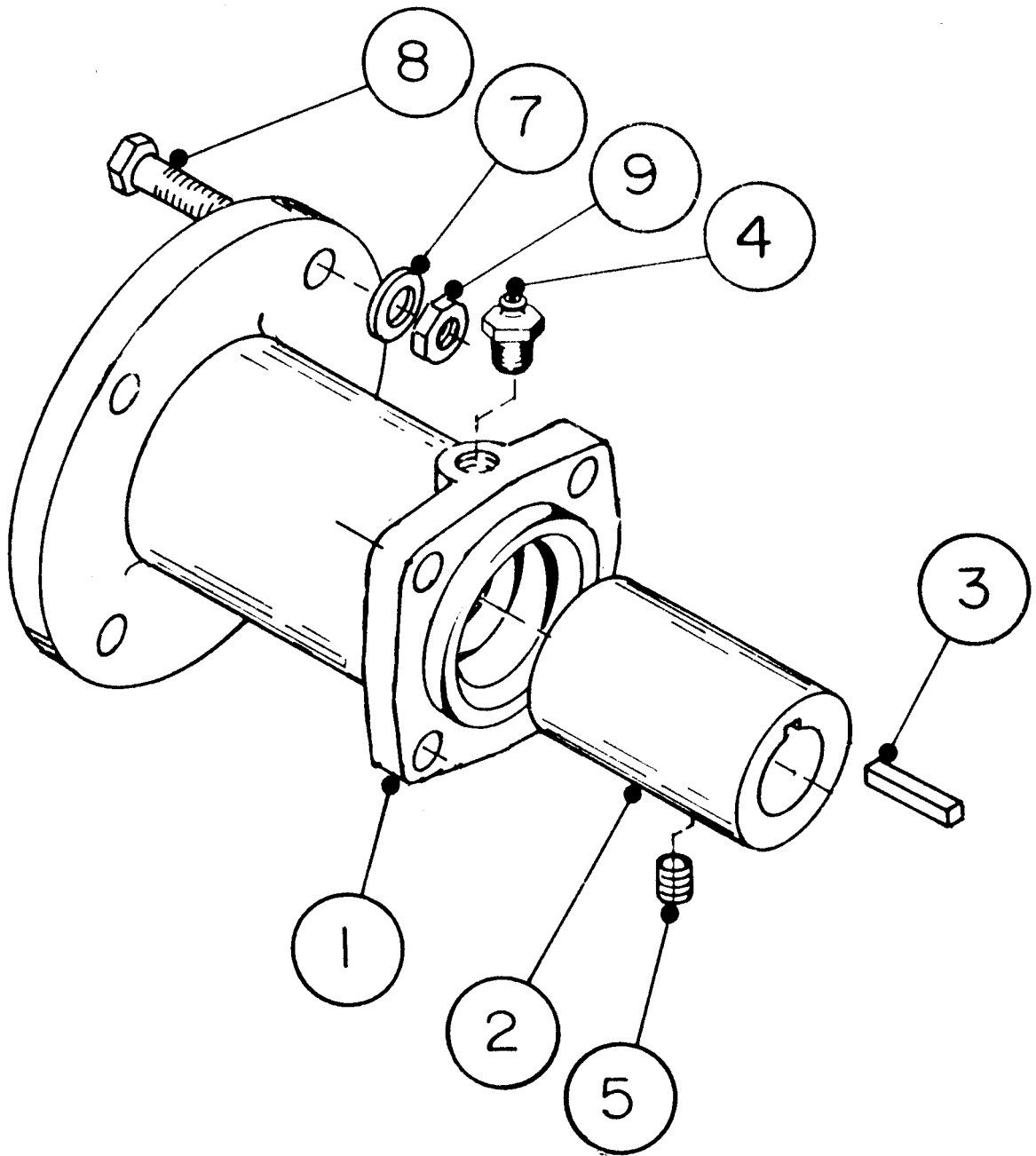
NOTE 2 - Bronze, I.D. - .020" smaller.

NOTE 3 - For other than water applications, contact factory.

NOTE 4 - When replacing shaft, order shaft, impeller, bolt, sleeve and key.

HYDRAULIC ADAPTER KIT

NT3M9 & TR1



Ref.#	Code #	Quantity	Description
1	426215	1	Adapter
2	426216	1	Coupling
3	432070	1	Key
4	110680	1	Grease Fitting
5	148380	1	Set Screw
7	176560	2	Spring Washer
8	120470	2	Bolt
9	128250	2	Nut

IMPORTANT: When ordering parts specify the model, code number and part description.