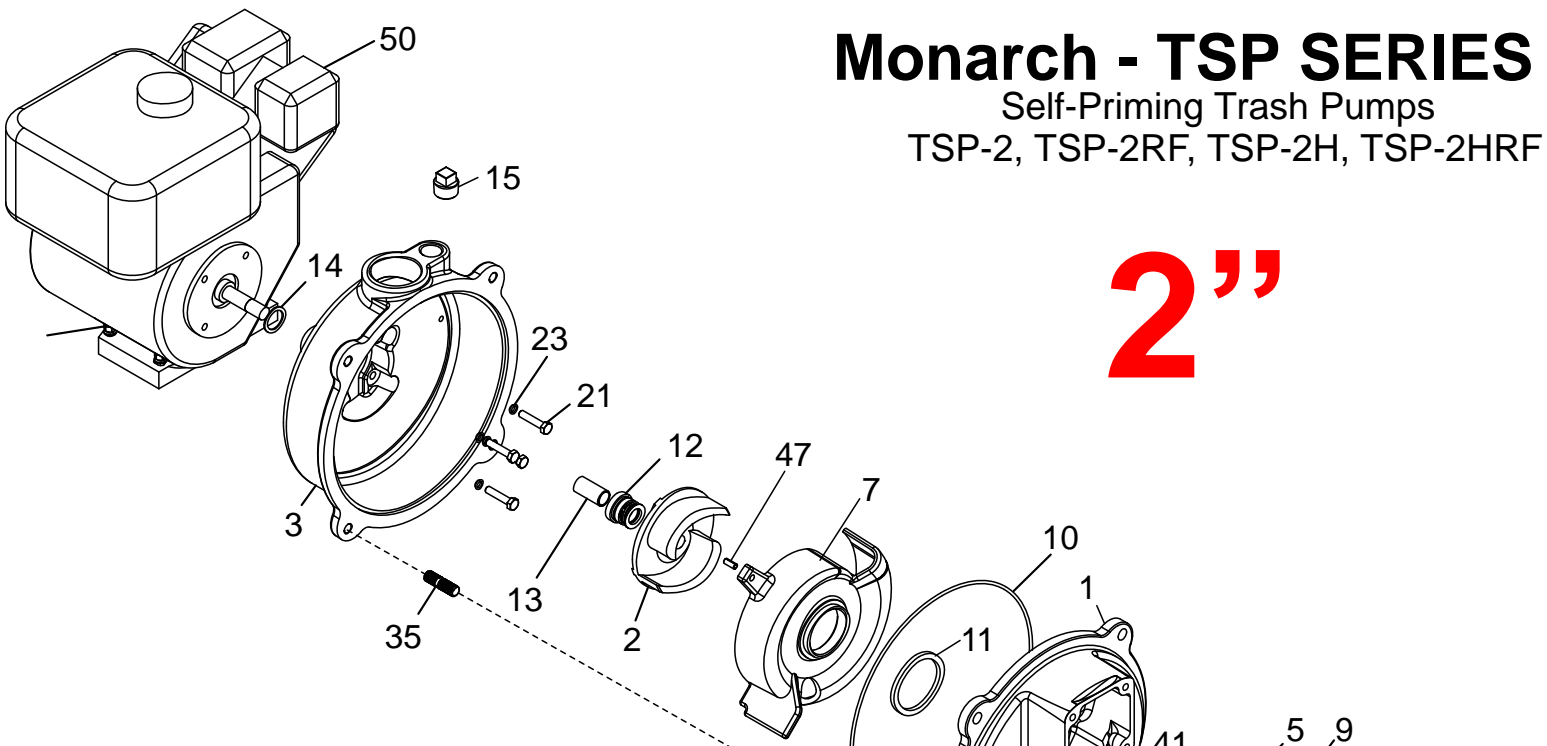


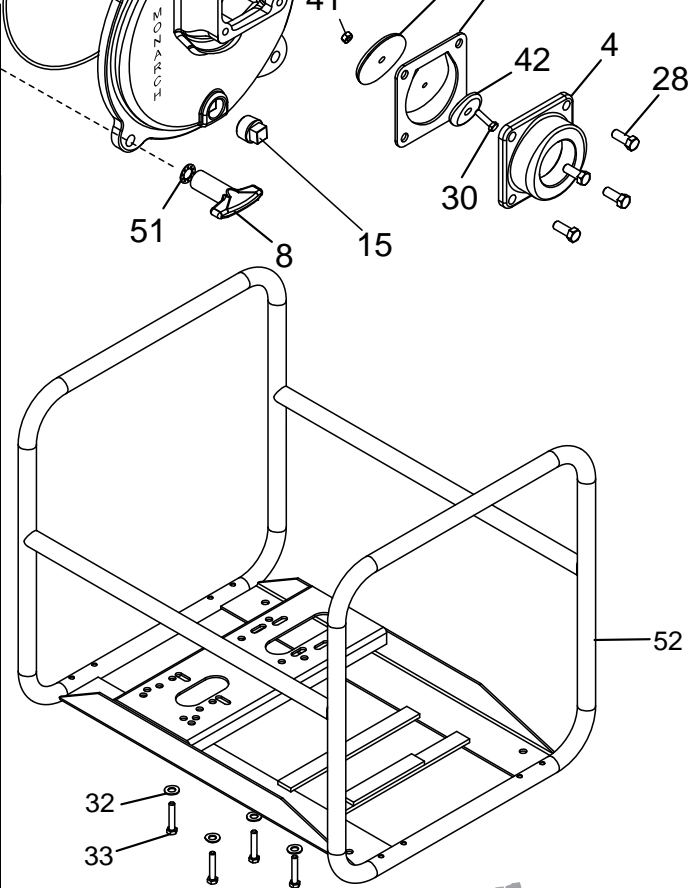
Monarch - TSP SERIES

Self-Priming Trash Pumps
TSP-2, TSP-2RF, TSP-2H, TSP-2HRF

2"



Ref.#	Part #	TSP-2	TSP-2RF	TSP-2H	TSP-2HRF	Description
1	465031	1	1	1	1	Front Casing, 2"
2	465001	1	1	1	1	Impeller
3	465021	1	1	1	1	Rear Casing, 2"
4	414730	1	1	1	1	Check Valve Cover
5*	014740	1	1	1	1	Top Weight
7	465011	1	1	1	1	Volute
8*	465053		4		4	Butterfly nut-special
	465046	4		4		Butterfly nut-special
9*	191261	1	1	1	1	Rubber Flapper
10*	198186	1	1	1	1	O-ring
11*	199700	1	1	1	1	Volute Ring
12*	240394	1	1	1	1	Mech Seal, Silicon Carbide (Standard) BUNA
	240393	1	1	1	1	Mech Seal, Ceramic Carbon Viton (Optional)
13*	266000	1	1	1	1	Sleeve, .626 ID x .75 OD x 1.595
14*	191140	1	1			Slinger
	191141			1	1	Slinger
15	185650	2	2	2	2	Pipe Plug 3/4 NPT
21	225962	4	4	4	4	Bolt 5/16 UNF x 1-3/4
23	199007	4	4	4	4	Washer Seal
28	120010	4	4	4	4	Bolt 3/8 UNC x 1
29	176530	10	4	10	4	Spring Washer 5/16
30	225750	1	1	1	1	Bolt 1/4 UNC x 1
31	128220	10	4	10	4	Nut 5/16 UNC
32	174440	10	4	10	4	Washer 3/8
33	119810	4	4	4	4	Bolt 5/16 UNC x 1-3/4
34	119760	6		6		Bolt 5/16 UNC x 3/4
35	170630			4		Stud 1/2 UNC x 1 1/2
	170641	4	4		4	Stud 1/2 UNC x 1 3/4
36	465059	1			1	L.H. Channel
37	465058	1			1	R.H. Channel
38	465062	1		1		Plate (pump)
39	465067	1		1		Plate (engine)
40	176010		4		4	Rubber Isolator
41	227810	1	1	1	1	Nut 1/4 UNC
42*	013150	1	1	1	1	Bottom Weight
45	465069	1		1		Handle
46	119980	2		2		Bolt 3/8 UNC x 5/8
47*	135471	2	2	2	2	Pin-slotted 1/4 x 5/8
50	201913	1	1			Engine 5HP B/S I/C
	202001			1	1	Engine 5HP Honda
51	176690	4	4	4	4	Lockwasher 1/2
52	465086		1		1	Roll Frame
53	265080		1		1	Strainer "not shown"



RIVER BEND



INDUSTRIES

Moorhead, MN 56560
218-236-1818
800-365-3070
www.riverbendind.com

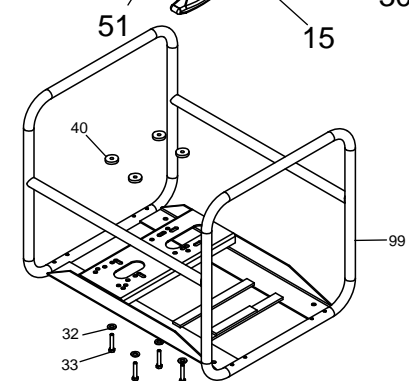
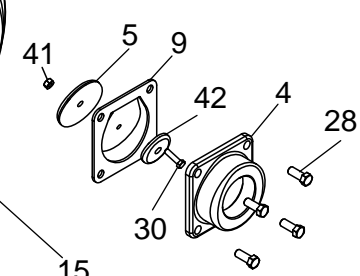
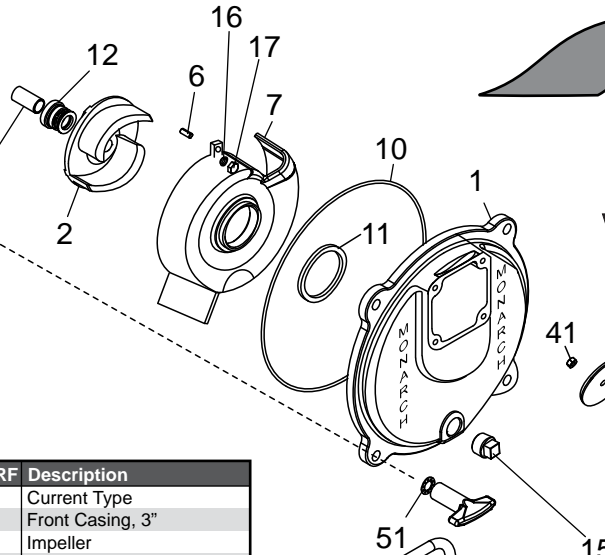
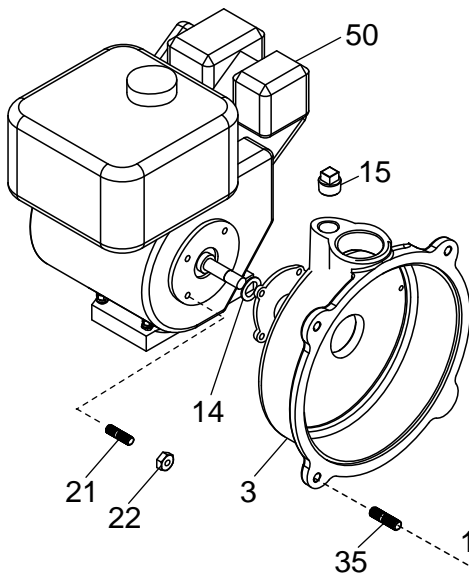
Monarch - TSP SERIES

Self-Priming Trash Pumps

TSP-3, TSP-3RF, TSP-3H, TSP-3HRF,
TSP-3D, TSP-3ICRF, TSP-3LP
TSP-3LPMK

RIVER BEND
INDUSTRIES

Moorhead, MN 56560
218-236-1818
800-365-3070
www.riverbendind.com



3"

Ref.#	Part #	TSP-3	TSP-3RF	TSP-3D	TSP-3H	TSP-3HRF	Description
1	465032	C	C	C	D	C	Current Type
1	465032	1	1	1	1	1	Front Casing, 3"
2	465002	1	1	1	1	1	Impeller
3	465022	N/A	N/A	N/A	N/A	N/A	Rear Casing type A (see note a), 3"
	465017	1	1	1	1	1	Rear Casing type B, 3"
	465093	1	1	1	1	1	Rear Casing type C & D, 3"
4	465042	1	1	1	1	1	Check Valve Cover
5*	438486	1	1	1	1	1	Top Weight
6*	135159	2	2	2	2	2	Pin 1/4 dia. x 1 SST type A & B
	172981	2	2	2	2	2	Stud 3/8 UNC x 1-1/2 SST Type C&D
7	465012	N/A	N/A	N/A	N/A	N/A	Volute type A (see note a)
	465014	1	1	1	1	1	Volute type B
	465005	1	1	1	1	1	Volute type C & D
8*	456053		4			4	Butterfly Nut-Special
	465046	4		4	4		Butterfly Nut-Special
9*	190716	1	1	1	1	1	Rubber Flapper
10*	197989	1	1	1	1	1	O-Ring
11*	199696	1	1	1	1	1	Volute Ring
12*	240395	1	1	1	1	1	Mechanical Seal SIC BUNA
13*	266006	1	1	1	1	1	Sleeve 1.001 X 1.250 X 2.280
14*	190848		1			1	Slinger
	191270	1		1	1	1	Slinger
15	185650	2	2	2	2	2	Pipe Plug 3/4 NPT
16	176500	2	2	2	2	2	Lock Washer 3/8 SST type C & D
17*	128630	2	2	2	2	2	Nut 3/8 UNC Brass type C & D
21*	164631	4	4	4	4	4	Stud 3/8 UNC x 1-1/2
22	227830	4	4	4	4	4	Nut 3/8 UNC
23	176688	4	4	4	4	4	Spring Lock Washer Int. 3/8 I.D.
28	120000	4	4	4	4	4	Bolt 5/16 UNC x 7/8
29	176530	10	4	2	10	4	Spring Lock Washer Int. 5/16 I.D.
30	225970	1	1	1	1	1	Bolt 5/16 UNC x 7/8 Zn. pl
31	128220	10	4	2	10	4	Nut 5/16 UNC
32	174440	10	4	2	10	4	Washer 3/8 I.D.
33	119810	4			4		Bolt 5/16 UNC x 1-3/4
	119820		4			4	Bolt 5/16 UNC x 2
34	119760	6		2	6		Bolt 5/16 UNC x 3/4
35*	170641	4	4	4	4	4	Stud 1/2 UNC x 1-1/2
36	465059	1		1	1		L.H. Channel
	415451			1			L.H. Channel
37	465058	1			1		R.H. Channel
	415452			1			R.H. Channel
38	465062	1			1		Pump End Support Plate
	465048			1			Pump End Support Plate
39	465060	1			1		Engine Support Plate
	465047			1			Engine Support Plate
40	176010		4			4	Rubber Isolator

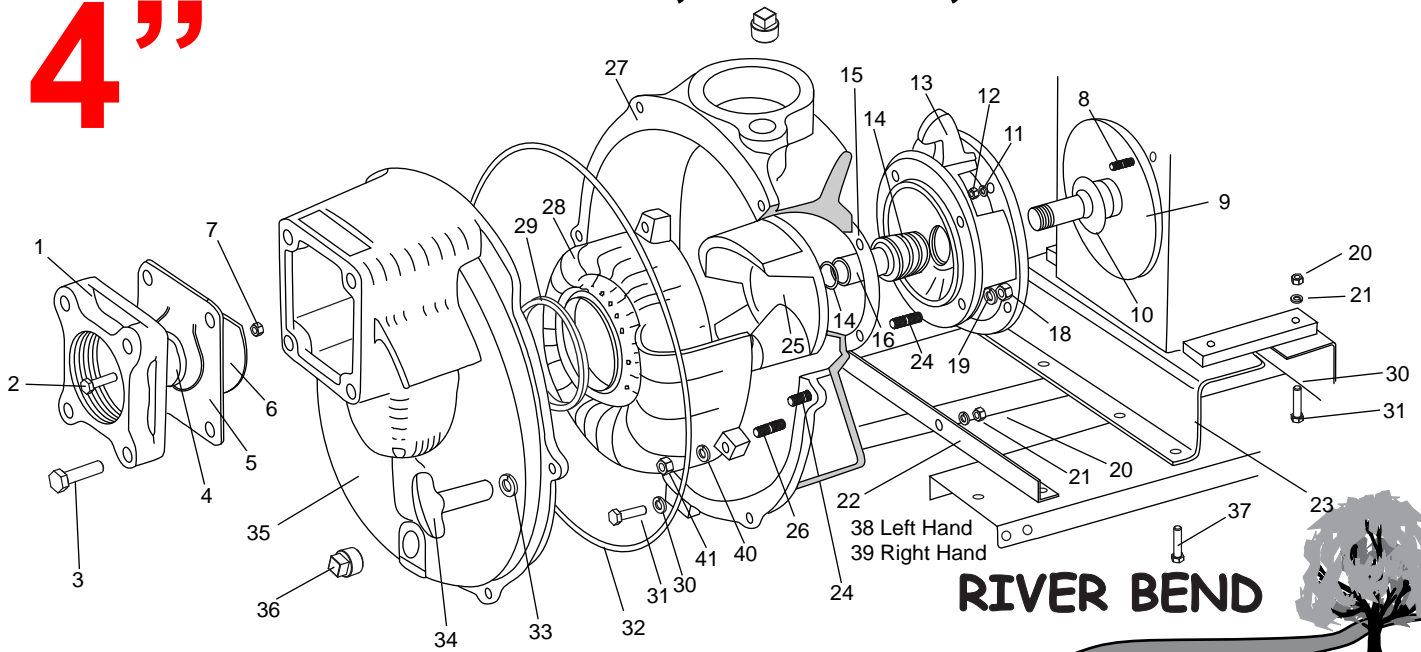
Ref.#	Part #	TSP-3	TSP-3RF	TSP-3D	TSP-3H	TSP-3HRF	Description
41	227820	1	1	1	1	1	Nut 5/16 UNC Zn. pl.
42	175530	1	1	1	1	1	Washer 21/64 I.D.
50	201919	1					Engine 8HP B/S I/C
	201929		1				Engine 8HP B/S I/C
	202050			1			Engine Lombardini (see note b)
	202002				1	1	Engine, 9HP Honda GX270UTPA2
51	176690	4	4	4	4	4	Tooth Lock Washer Int. 1/2 I.D.
80	128230			4			Nut 3/8 UNC grade 5
81	176540			4			Spring Lock Washer 3/8 I.D.
82	128250			4			Nut 1/2 UNC grade 5
83	176560			4			Spring Lock Washer 1/2 I.D.
84	174450			4			Washer 7/16 I.D.
85	120000			4			Bolt 3/8 UNC x 7/8
86	174470			4			Washer 7/16 I.D.
87	120430			4			Bolt 1/2 UNC x 1
99	465086		1			1	Roll Frame Weldment
N/S	456065	1					Handle
N/S	433184				1		Handle
N/S	265090	1	1	1	1	1	Strainer

* Suggested parts to stock.
When ordering parts specify Model #, Code #, and Type.
(N/S not shown), (N/A not available).
IMPORTANT: Rear casing and Volute must be of the same Type.
NOTE: a) To replace Type A Volute or Rear casing, order Type C items; 3,6,7,16 & 17.
b) No longer has decompression feature.

Monarch Pumps

TSP-4K, TSP-4VOFT, TSP4-18V TSP-4D, TSP-4LP, TSP-4LPMK

4"



RIVER BEND

INDUSTRIES

Moorhead, MN 56560
218-236-1818
800-365-3070
www.riverbendind.com

Ref.#	Part #	TSP-4K, TSP-4LPMK	TSP-4D	TSP-4VOFT	TSP4-18V	Description
1	419600	1	1	1	1	Check Valve Cover
2	227090	4	4	4	4	Bolt 5/8" UNC x 3" Zinc Plated
3	225980	1	1	1	1	Bolt 5/16" UNC x 1" Zinc Plated
4	016670	1	1	1	1	Check Valve Weight
5	191460	1	1	1	1	Rubber Valve
6	019610	1	1	1	1	Check Valve Weight
7	227820	1	1	1	1	Nut 5/16" UNC Zinc Plated
8	170490	4	4	4	4	Stud 7/16" UNC x 1-3/4" Zinc
9	201957	1				Engine Kohler 16HP, M16PS Threaded Shaft 2.99" Length
	202055		1			Engine, Lombardini Diesel
	201934			1		Engine Vanguard 18HP Model 356447-0191-B1 570cc
	201941				1	Engine Vanguard 18HP with Integrated Fuel Tank
10	190849	1	1	1	1	Slinger
11	176240	4	4	4	4	Washer Spring 7/16" Zinc Plated
12	227840	4	4	4	4	Nut, 7/16" UNC Zinc Plated
13	465018	1	1			Adapter, Kohler 16 HP
	465145			1	1	Adapter, Vanguard 18 HP
14	240396	1	1	1	1	Mechanical Seal, 1-3/8" Dia. SIC BUNA
15	190725	1	1	1	1	Gasket
16	266011	1				Sleeve 1.003 X 1.375 X 1.730
	465503		1			Sleeve 1.003 X 1.375 X 2.022
	465147			1	1	Sleeve 1.003 X 1.375 X 2.007
17	175533	As Required				Shim 1.006 x1.50 x.015
	175534	As Required				Shim 1.006 x1.50 x.031
18	227850	4	4	4	4	1/2" Nut UNC Zinc Plated
19	176250	4	4	4	4	Washer Spring 1/2" Zinc Plated
20	227830	17	8	16	16	Nut 3/8" UNC Zinc Plated
	227820	1		4	4	Nut 5/16" UNC Zinc Plated
21	176230	17		16	16	Washer Spring 3/8" Zinc Plated
	176220			4	4	Washer Spring 5/16" Zinc Plated
22	465041	1				Support Angle
	465148			1	1	Support Cross Brace
23	465049	1		1	1	Support Plate
24	170641	10	10	10	10	Stud, 1/2" UNC x 1-3/4" Zinc Plated
25	465064	1				Impeller
	465003		1			Impeller
	465146			1	1	Impeller
26	173000	3	3	3	3	Stud 3/8" UNC x 2" SST
27	465094	1	1	1	1	Rear Casing, Type B
28	465006	1	1	1	1	Volute, Type B
29	190726	1	1	1	1	Volute Ring
30	174986	17		16	16	Washer Plain 3/8" Zinc Plated
	174990			4	4	Washer Plain 5/16" Zinc Plated

Ref.#	Part #	TSP-4K, TSP-4LPMK	TSP-4D	TSP-4VOFT	TSP4-18V	Description
31	226230	5	1	1	1	Bolt 3/8"UNC x 1-1/2" Zinc Plated
	226010			4	4	Bolt 5/16"UNC x 1-3/4" Zinc Plated
32	198163	1	1	1	1	O-Ring
33	176690	6	6	6	6	Tooth Lock Washer 1/2" Zinc
34	465046	6	6	6	6	Butterfly Nut - Special
35	465033	1	1	1	1	Front Casing, 4"
36	185650	2	2	2	2	Plug 3/4"NPTF Zinc Plated
37	226210	12		15	15	Bolt 3/8"UNC x 1" Zinc Plated
38	465035	1		1	1	L.H. Channel
39	465034	1		1	1	R.H. Channel
40	176500	3		3	3	Washer Spring 3/8"SST
41	225826	3		3	3	Nut 3/8"UNC SST
Battery Holder Components						
N/S	265280	1		1	1	Strainer
N/S	465099	1		1	1	Bracket
N/S	174986	2		2	2	Washer Plain 3/8" Zinc Plated
N/S	176230	4		4	4	Washer Spring 3/8" Zinc Plated
N/S	226210	4		4	4	Bolt 3/8"UNC x 1" Zinc Plated
N/S	227830	6		6	6	Nut 3/8"UNC Zinc Plated
N/S	435480	1		1	1	Frame
N/S	435485	1		1	1	Cover
Fuel Tank Components						
N/S	116701			4		Clamp
N/S	195185			1		Adapter 1/4NPTM X 5/1610 hose
N/S	200397			1		Primer Bulb
N/S	200548			1		Fuel Tank
N/S	400808			1		Fuel Line Hose 4-1/2"
N/S	400809			1		Fuel Line Hose 24-3/4"
Muffler Components						
N/S	201880			1		Muffler
N/S	201881			1		Manifold
N/S	201882			2		Screw, Muffler
N/S	201883			1		Clamp, muffler
N/S	201884			1		Deflector, spark arrestor
N/S	201885			1		Oil filter adapter kit
N/S	201886			2		Gasket, manifold
N/S	201887			4		Screw manifold