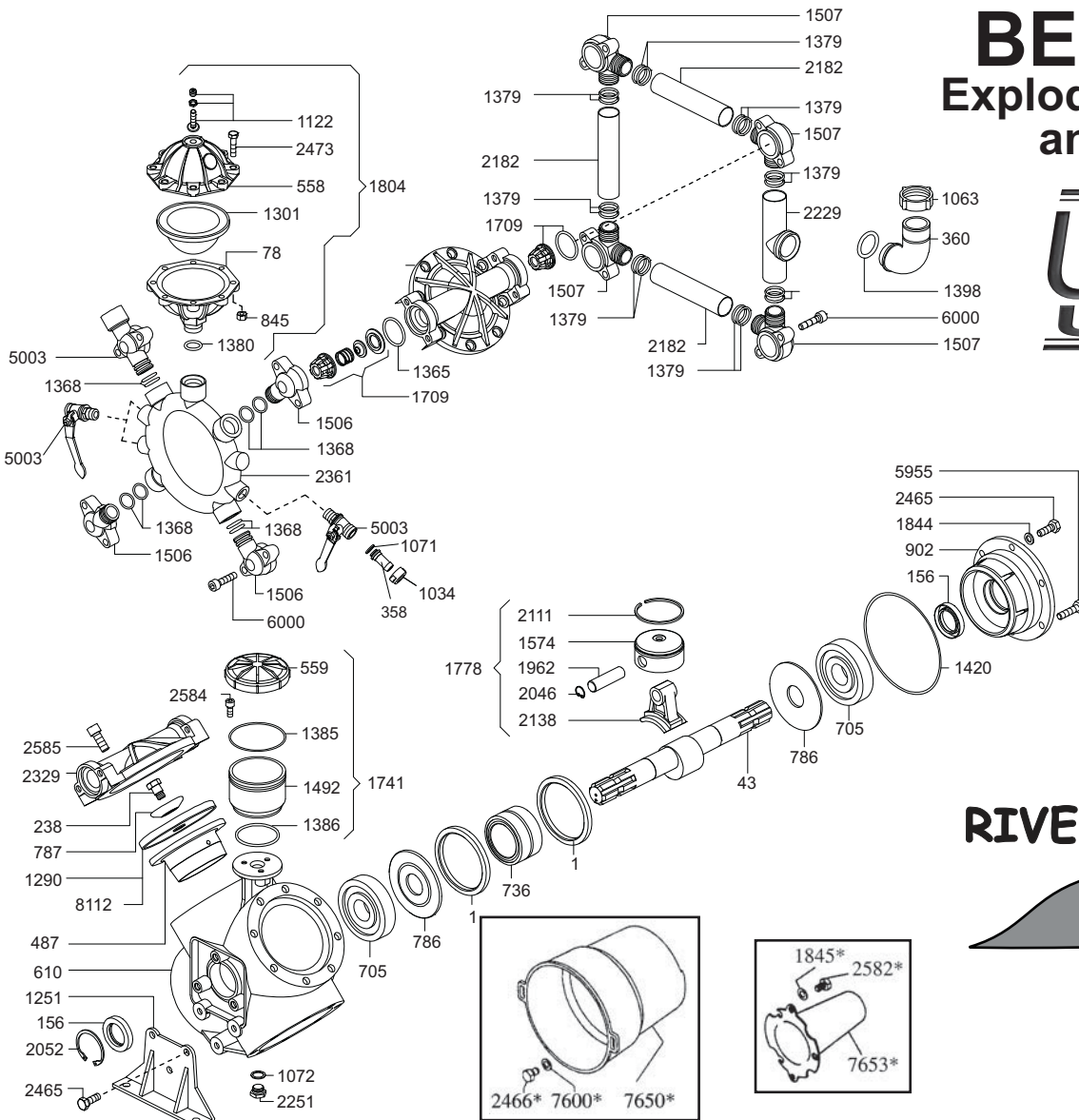
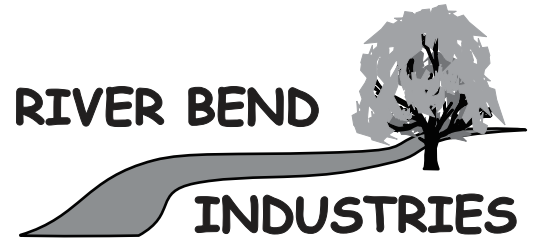


BETA-150/CC

Exploded View Diagram and Parts List



BETA-150/CC PUMP
 Requires 87 oz.
UDOR LUBE,
 or SAE 30W
 Non-detergent Oil



Moorhead, MN 56560
 218-236-1818
 800-365-3070
www.riverbendind.com

REF#	PART #	DESCRIPTION	QTY
1	0001.01	Retainer ring	2
43	0002.29	Crank Shaft	1
78	0003.10	Accumulator Body	1
156	0007.02	Crank Shaft Seal	2
238	0102.03	Diaphragm Bolt	4
358	0202.19	1/2" Barb	2
360	0202.84	Suction Hose Barb	1
487	0206.12	Piston Sleeve	4
558	0208.21	Accumulator Head	1
559	0208.22	Oil Reservoir Cap	1
610	0209.17	Pump Body	1
705	0214.11	Ball Bearing	2
736	0216.02	Needle Bearing	1
786	0301.02	Washer	2
787	0301.03	Retainer Washer	4
845	0303.01	Nut	8
902	0501.46	Flange	1
974	0602.01	Gasket	1
1034	0604.09	Barb Nut	2
1036	0604.48	Suction Nut	1
1071	0605.05	Rubber Gasket	2
1072	0605.09	Aluminum Gasket	1
1122	0608.16	Air Valve Assembly	1
1290	0903.01	Diaphragm (BUNA-N, Optional)	4
**1301	0903.16	Accumulator Diaphragm	1
**1365	1101.01	O-Ring	8
1368	1101.04	O-Ring	8
1379	1101.31	O-Ring	16
1380	1101.27	O-Ring	1
1385	1101.32	O-Ring	1
1386	1101.33	O-Ring	1
1398	1101.42	O-Ring	1
1451	1202.14	Base Plate	2
1492	1203.30	Oil Reservoir	1

REF #	PART #	DESCRIPTION	QTY
1505	1203.45	Discharge Elbow, 3/4" F	2
1506	1203.46	Discharge Elbow	2
1507	1203.54	Suction Elbow	4
1571	1205.08	Piston	4
1709	6006.08	Valve Assembly	8
1741	6033.02	Oil Reservoir Kit	1
1778	6015.01	Piston & Rod Assembly	4
1804	6031.02	Accumulator Assembly	1
1844	1403.09	Washer	4
*1845	1403.10	Washer	3
1962	1502.01	Connecting Rod Pin	4
2046	1506.02	Snap Ring	8
2052	1506.16	Snap Ring	1
2111	1509.05	Piston Ring	4
2138	1519.03	Connecting Rod	4
2182	1601.27	Suction Tube	3
2229	1602.30	Suction Tube	1
2251	1603.02	Oil Plug	1
2277	1603.34	Plug	1
2329	1604.54	Head	4
2361	1605.22	Discharge Manifold	1
2465	1804.03	Bolt	10
*2466	1804.06	Bolt	3
2473	1804.54	Bolt	8
*2582	1805.04	Bolt	3
2584	1805.06	Bolt	3
2585	1805.08	Bolt	32
5003	0608.46	Ball Valve (Right)	2
6000	1805.07	Bolt	16
*7600	1403.36	Washer	3
*7650	1219.02	PTO Safety Shield (optional)	1
*7653	1219.15	Shaft Protector Thru Shaft (optional)	1
**8112	0903.33	Diaphragm (DESMOPAN, Standard)	4