



6004.05 Control Unit

Exploded View Diagram and Parts List

RIVER BEND



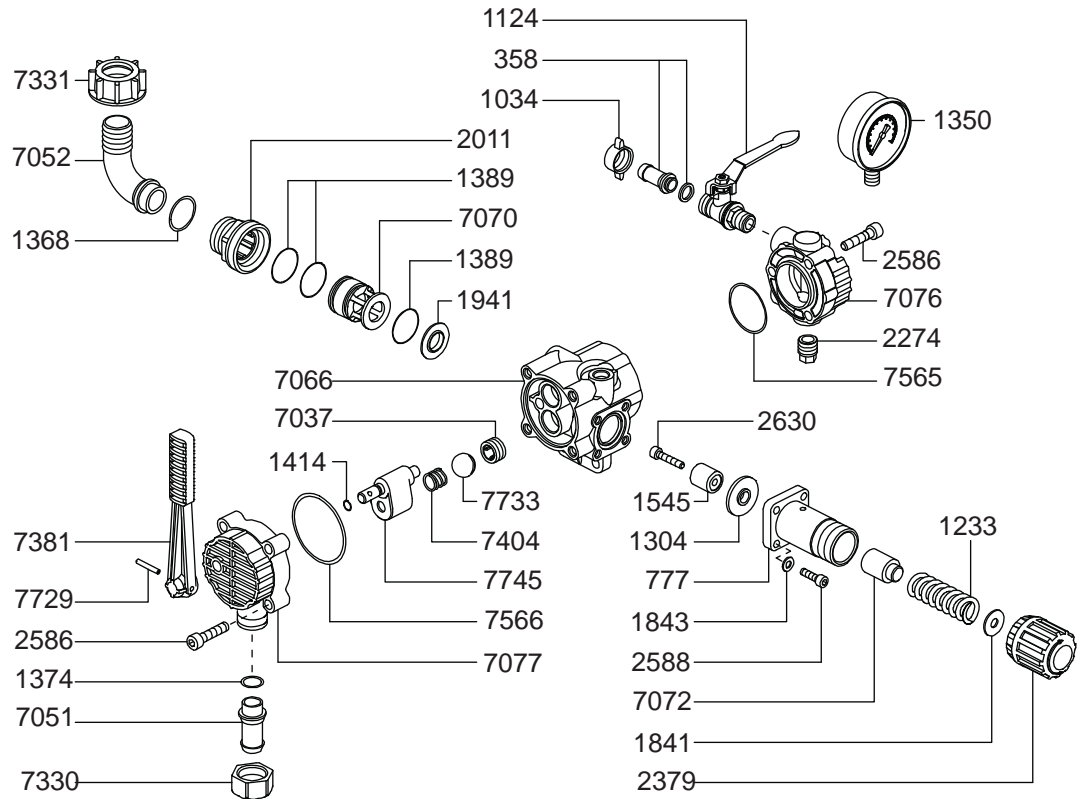
INDUSTRIES

Moorhead, MN 56560

218-236-1818

800-365-3070

www.riverbendind.com



REF #	PART #	DESCRIPTION	QTY	REF #	PART #	DESCRIPTION	QTY
358	0202.19	1/2" Hose Barb	2	2588	1805.19	Bolt	4
777	0252.05	Spring Body	1	*2630	1810.01	S. S. Bolt	1
1034	0604.09	Discharge Barb Nut	2	7037	0113.13	Ball Seat	2
1124	0608.45	Ball Valve	2	7051	0202.69	3/4" Brass Barb	1
1233	0901.24	Spring	1	7052	0202.75	Bypass Hose Barb	1
*1304	0903.26	R. V. Diaphragm	1	7066	0204.07	R. V. Body	1
1350	gg-1000	Gauge	1	7070	0205.14	Cylinder	1
*1368	1101.04	O-Ring	1	7072	0205.16	Spring Guide	1
1374	1101.12	O-Ring	1	7076	0208.38	Discharge Plate	1
*1389	1101.41	O-Ring	3	7077	0208.39	Selector Body	1
*1414	1106.09	O-Ring	1	7330	0604.29	Barb Nut	1
*1545	1204.19	R. V. Poppet	1	7331	0604.36	Nut	1
1841	1403.06	Washer	1	7381	0803.13	Lever	1
1843	1403.07	Washer	4	7404	0901.44	Spring	1
*1941	1501.29	Seat	1	*7565	1101.66	O-Ring	1
2011	1504.02	Bypass Seat	1	*7566	1101.67	O-Ring	1
2274	1603.44	Plug	2	7729	1507.13	Roll Pin	1
2379	1801.17	Adjustment Knob	1	7733	1518.05	Control Unit Ball	1
2586	1805.13	Bolt	7	7745	1531.03	Control Selector	1

* Parts Included in Repair Kit - #6062.56.