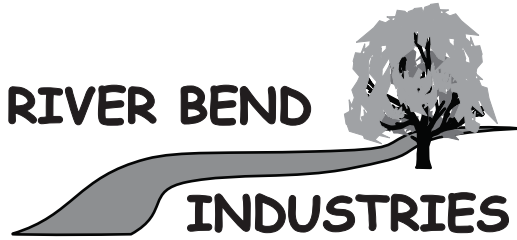


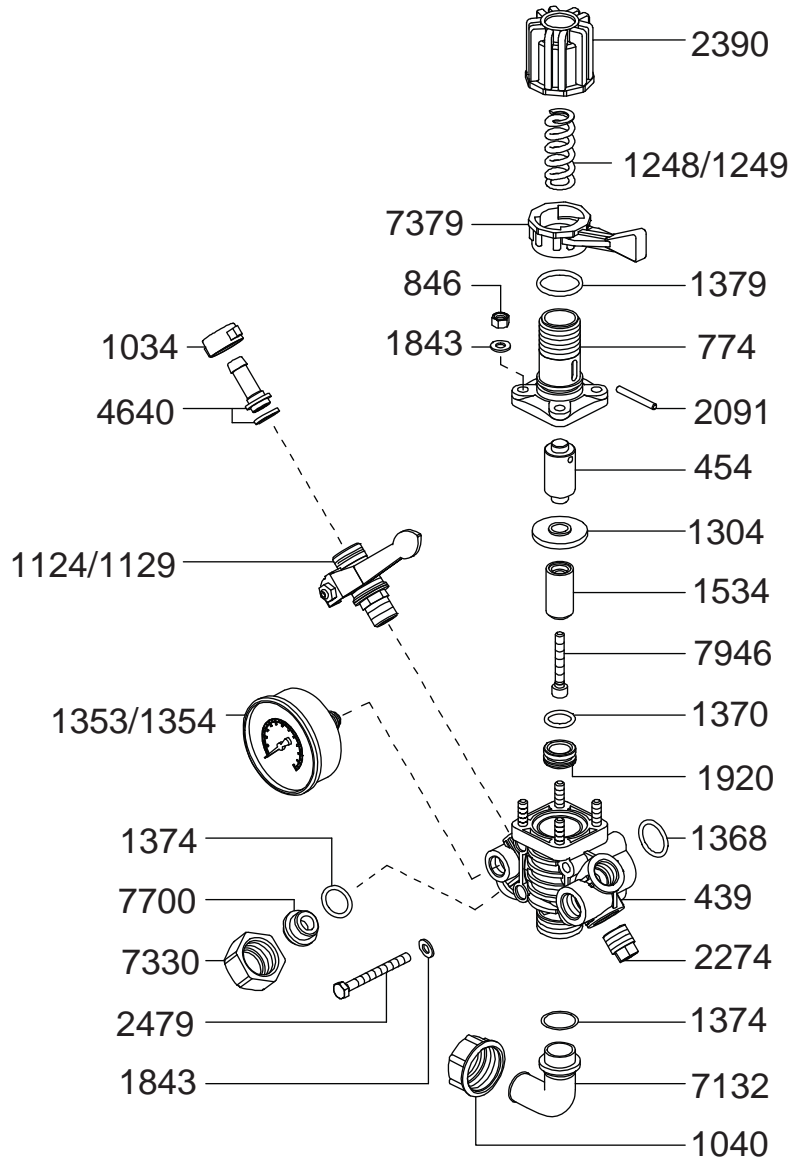


6010.93 & 6010.95 Control Unit

Parts List



Moorhead, MN 56560
218-236-1818
800-365-3070
www.riverbendind.com



REF #	PART #	DESCRIPTION	QTY	REF #	PART #	DESCRIPTION	QTY
439	0204.69	Body	1	*1374	1101.12	O-Ring	2
454	0205.19	Cylinder	1	*1379	1101.23	O-Ring	1
774	0204.70	Body	1	*1534	1204.31	Poppet	1
846	0303.02	Nut	4	1843	1403.07	Washer	6
1034	0604.09	Barb Nut	2	*1920	1501.50	Seat	1
1040	0604.26	Bypass Barb Nut	1	2091	1512.10	Pin	1
1124	0608.45	Ball Valve-Right	1	2274	1603.44	Plug	1
1129	0608.46	Ball Valve-Left	1	2390	1801.32	Adjustment Knob	1
1248	0901.71	Spring (560 PSI)	1	2479	1804.74	Bolt	2
1249	0901.73	Spring (300 PSI)	1	4640	0202.19	1/2" Hose Barb	2
*1304	0903.26	Diaphragm	1	7132	0254.04	Bypass Hose Barb	1
1353	GG-1000BM	Gauge	1	7330	0604.29	Nut	1
1354	GG-350BM	Gauge	1	7379	0803.21	Lever	1
*1368	1101.04	O-Ring	1	7700	1603.22	Plug	1
*1370	1101.06	O-Ring	1	*7946	1810.03	S.S. Bolt	1

* Parts Included in Repair Kit - #6062.A9. Note : 6062.A9 is the only repair kit to be used in this control unit.