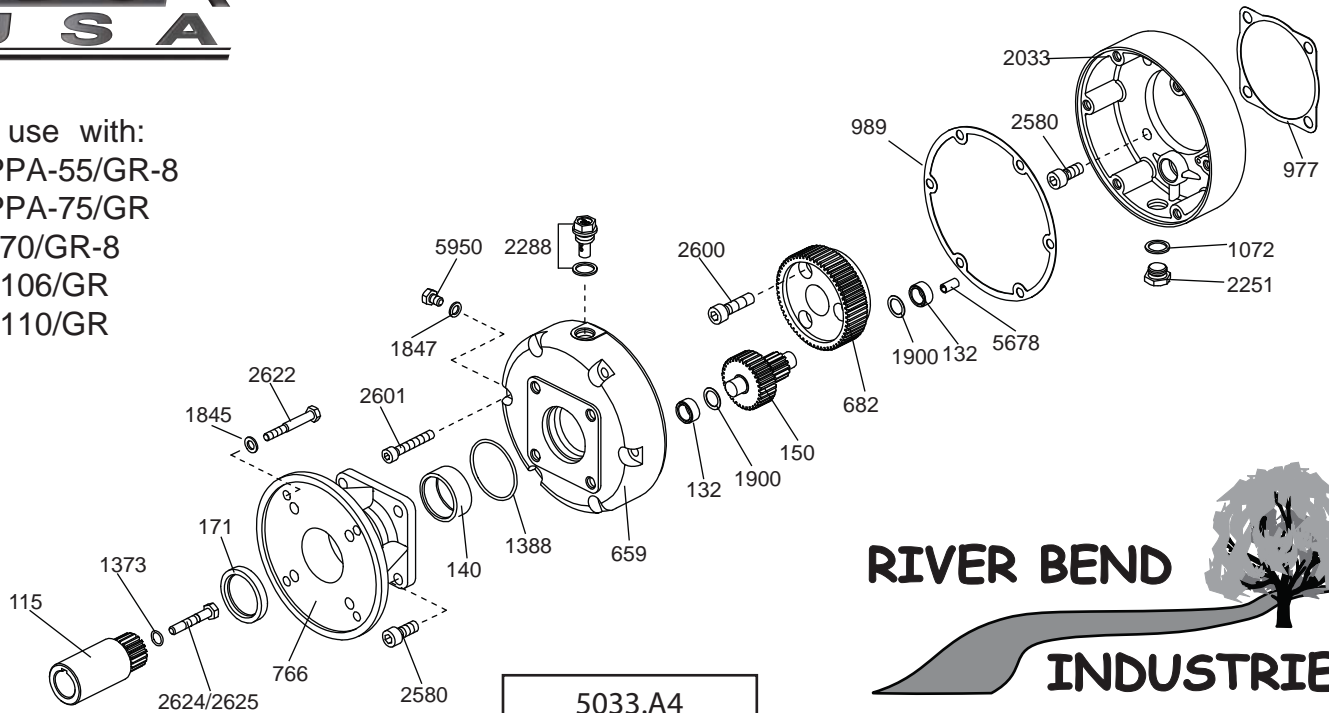




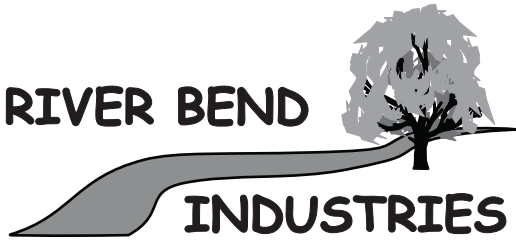
5033.A4 Gearbox

Installation Instructions & Parts List

For use with:
 KAPPA-55/GR-8
 KAPPA-75/GR
 RO-70/GR-8
 RO-106/GR
 RO-110/GR



5033.A4
 Gearbox
 Requires 16 oz.
 90W Gear Lube



Moorhead, MN 56560
218-236-1818
800-365-3070
www.riverbendind.com

REF#	PART #	DESCRIPTION	QTY	REF#	PART #	DESCRIPTION	QTY
115	0004.21	Engine Gear	1	1847	1403.12	Aluminum Gasket	1
132	0006.01	Bearing	2	1900	1413.01	Thrust Washer	2
140	0006.11	Bearing	1	2033	1505.28	Gear Case Half	1
150	0019.01	Transmission Gear	1	2251	1603.02	Oil Plug	1
171	0007.33	Seal	1	2288	1603.81	Vent Cap	1
659	0212.09	Gear Case Half	1	2580	1805.01	Bolt	4
682	0213.23	Pump Gear	1	2600	1805.33	Bolt	3
766	0228.27	Engine Flange	1	2601	1805.36	Bolt	6
977	0602.05	Gasket	1	2622	1807.07	Bolt - 5/16"x1"	4
989	0602.36	Gasket	1	2624	1807.09	Bolt - 7/16"x1-3/4"	1
1072	0605.09	Aluminum Gasket	1	2625	1807.10	Bolt - 3/8"x1-3/4"	1
1373	1101.11	O-Ring	1	5950	1804.77	Side Plug	1
1388	1101.36	O-Ring	1	5678	1512.08	Guide Pin	1
1845	1403.10	Washer	4				

NOTE - USE BLUE THREADLOCKER OR EQUIVALENT ON ALL BOLTS.

1. Apply a light coating of anti-seize compound or grease to engine shaft and install 1/4" key, which is supplied with the engine.
2. Install engine gear (Ref #115) on engine shaft and secure with 3/8" (Ref #2625) or 7/16" (Ref #2624) bolt provided. Make certain O-Ring (Ref #1373) is on the bolt.
3. Install assembly onto engine, making certain not to damage gear box seal (Ref #171). Secure assembly to engine using the (4) 5/16"x1" bolts (Ref #2622) provided.
4. Fill gear box with 16 oz. of 90W gear lube to level plug (Ref #5950).