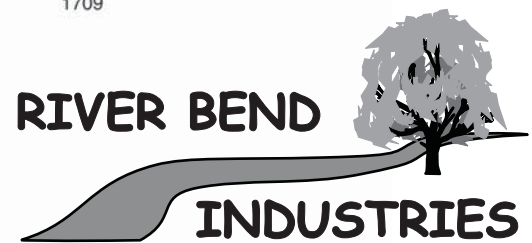
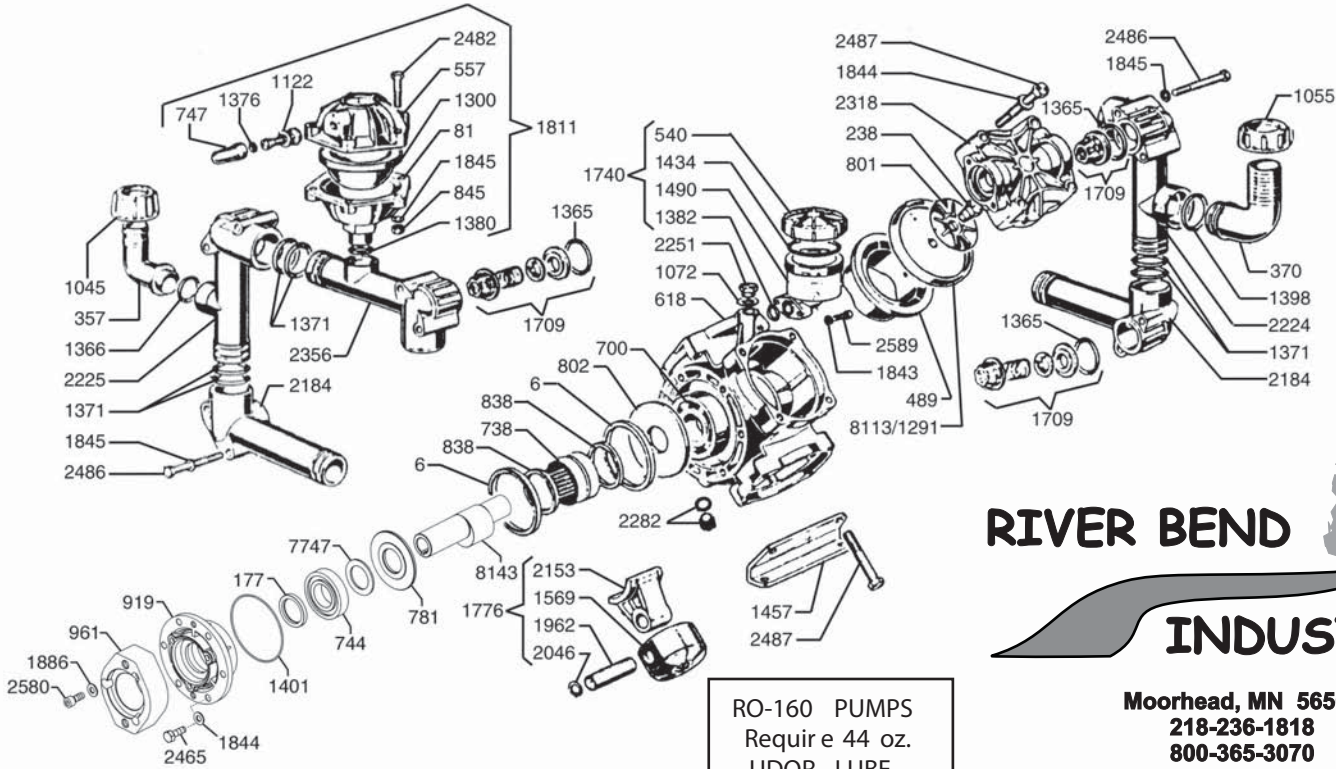




RO-160HYD

Exploded View Diagram and Parts List



RO-160 PUMPS
 Require 44 oz.
UDOR LUBE
 or SAE 30W
 Non-detergent Oil

Moorhead, MN 56560
218-236-1818
800-365-3070
www.riverbendind.com

REF#	PA RT #	DESCRIPTION	QTY	REF#	PA RT #	DESCRIPTION	QTY
6	0001.08	Retainer Ring	2	1398	1101.42	O-Ring	1
81	0003.15	Pressure Accumulator	1	1401	1101.58	O-Ring	1
177	0007.41	Shaft Seal	1	1434	1101.01	O-Ring	1
238	0102.03	Diaphragm Bolt	4	1457	1202.29	Base Plate	2
357	0202.18	Discharge Elbow	1	1490	1203.27	Oil Reservoir Assembly	1
370	0202.78	Suction Elbow	1	1569	1205.06	Aluminum Piston	4
489	0206.14	Piston Sleeve	4	1709	6006.08	Valve Assembly	8
540	0208.98	Oil Reservoir Cap	1	1740	6033.01	Oil Reservoir Assembly	1
557	0208.20	Accumulator Head	1	1776	6015.30	Piston & Rod Assembly	4
618	0209.25	Pump Body (RO-160HYD)	1	1811	6031.09	Accumulator Assembly	1
700	0214.04	Ball Bearing	1	1843	1403.07	Washer	2
738	0216.07	Roller Bearing	1	1844	1403.09	Washer	18
744	0214.14	Bearing	1	1845	1403.10	Washer	22
747	0218.01	Air Valve Cap	1	1886	1411.03	Washer	3
781	0301.48	Washer	1	1962	1502.02	Connecting Rod Pin	4
801	0301.07	Retainer Washer	4	2046	1506.02	Snap Ring	8
802	0301.28	Washer	1	2153	1519.20	Connecting Rod	4
838	0302.59	Spacer Ring	2	2184	1601.12	Manifold	5
845	0303.01	Hex Nut	6	2224	1602.20	Suction Manifold	1
919	0501.67	Bearing Flange	1	2225	1602.21	Discharge Manifold	1
961	0501.01	Adapter Flange	1	2251	1603.02	Oil Plug	1
1045	0604.32	Barb Nut	1	2282	1603.50	Drain Plug	1
1055	0604.50	Barb Nut	1	2318	1604.36	Head	4
1072	0605.09	Aluminum Gasket	1	2356	1605.15	Discharge Manifold	1
1122	0608.16	Air Valve Assembly	1	2465	1804.03	Bolt	6
1291	0903.02	Piston Diaphragm, BUNA-N Optional	4	2482	1804.09	Bolt	6
*1300	0903.14	Accumulator Diaphragm	1	2486	1804.79	Bolt	16
*1365	1101.01	O-Ring	8	2487	1804.25	Bolt	16
1366	1101.02	O-Ring	1	2580	1805.01	Bolt	3
1371	1101.07	O-Ring	16	2589	1805.31	Bolt	2
1376	1101.16	O-Ring	1	7747	1524.09	Spacer	1
1380	1101.25	O-Ring	1	*8113	0903.34	Piston Diaphragm, DESMOP AN Standard	4
1382	1101.29	O-Ring	1	8143	0002.A9	Crankshaft	1

* Parts Included in Diaphragm Repair Kit - #8700.09. (Also available in BUNA-N - #8700.16.)