

# ZETA-40P Exploded View Diagram and Parts List

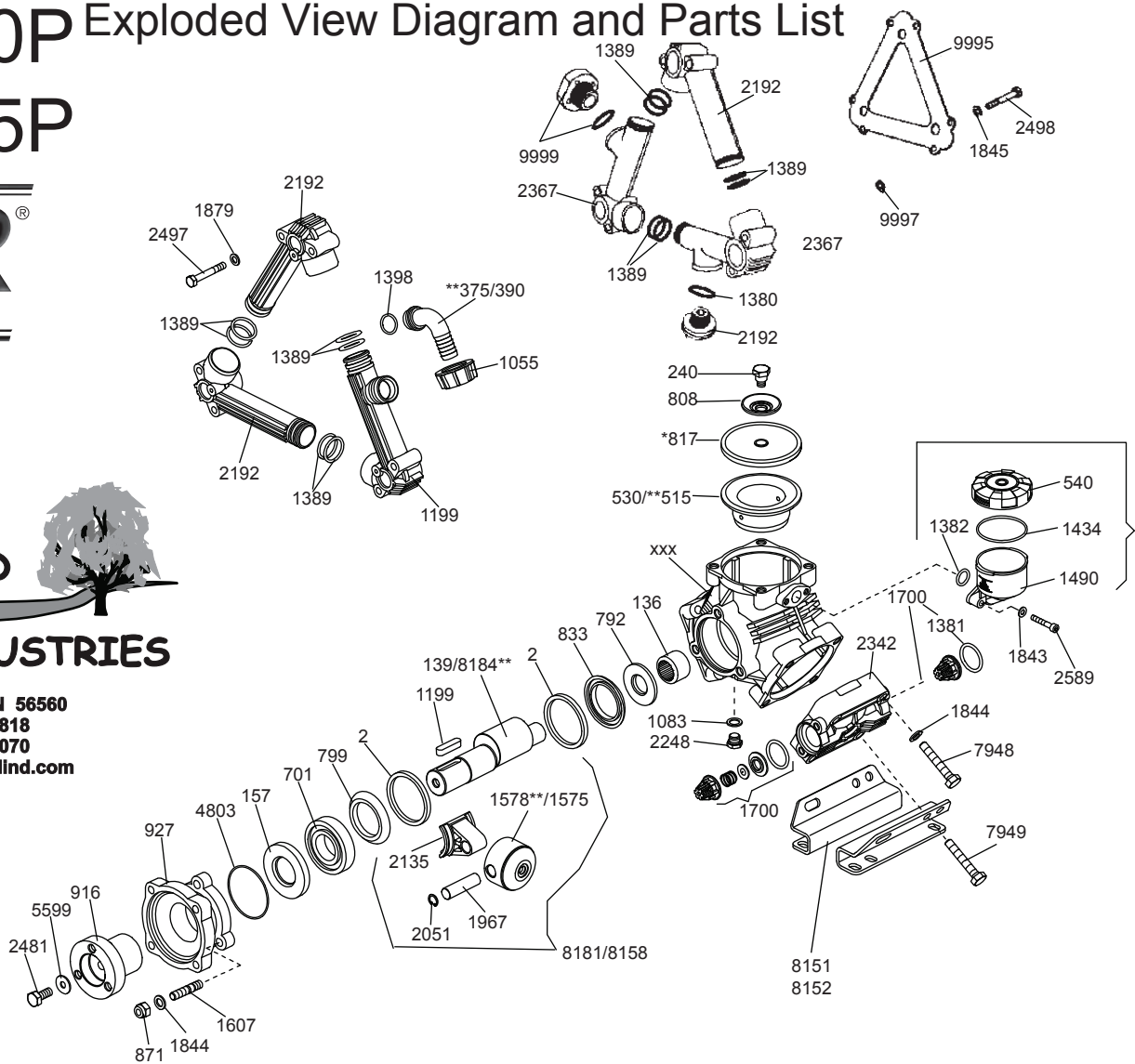
## ZETA-85P



**RIVER BEND  
INDUSTRIES**

Moorhead, MN 56560  
218-236-1818  
800-365-3070  
www.riverbendind.com

ZETA-40P & ZETA-85P  
PUMPS  
Require 32 oz.  
UDOR LUBE,  
or SAE 30W  
Non-detergent Oil



REF#	PA RT #	DESCRIPTION	QTY	REF#	PA RT #	DESCRIPTION	QTY
2	02-0001.01	Retainer Ring	2	1740	02-6033.01	Oil Reservoir Assembly	1
136	02-0006.07	Bearing	1	1843	02-1400.04	Washer S.S.	2
139	02-0002.D7	Crank Shaft	1	1844	02-1400.03	Head Bolt Washer S.S.	15
157	02-0007.05	Seal	1	1845	02-1414.02	Manifold Washer S.S.	12
240	02-0102.16	Diaphragm Bolt S.S.	3	1967	02-1502.07	Connecting Rod Pin	3
**375	02-0202.78	Suction Elbow (ZETA-85)	1	2051	02-1506.15	Snap Ring	6
390	02-1406.94	Suction Elbow	1	2135	02-1519.30	Connecting Rod	3
**515	02-0206.44	Piston Sleeve (ZETA-85)	3	2192	02-1601.25	Manifold Tube	3
530	02-0206.08	Piston Sleeve	3	2193	02-1601.26	Intake Manifold Tube	1
540	02-0208.98	Oil Cap	1	2248	02-1603.67	Oil Plug	1
590	02-0209.76	Crankcase	1	2286	02-1603.87	Plug	1
701	02-0214.05	Bearing	1	2342	02-1604.94/P	Head Poly	3
792	02-0301.12	Spacer	1	2367	02-1605.28	Discharge Manifold Tube	2
799	02-0301.24	Washer	1	2481	02-1804.07	Bolt	1
808	02-0301.43	Diaphragm Washer	3	2482	02-1804.09	Bolt	6
833	02-0302.52	Rod Spacer	2	2497	02-1900.02	Suction Manifold Bolt S.S.	6
871	02-0304.04	Nut	3	2498	02-1900.01	Discharge Manifold Bolt S.S.	6
916	02-0501.62	Crank Adapter	1	2589	02-1900.04	Oil Cup Bolt S.S.	2
927	02-0501.79	Adapter Flange	1	4803	02-1101.43	O-Ring	1
1055	02-0604.50	Barb Nut	1	5599	02-1403.02	Washer	1
1083	02-0605.49	Plug Gasket	1	7948	02-1816.21	Head Bolt S.S.	12
1199	02-0801.11	Key	1	7949	02-1900.00	Rail Bolt S.S.	4
1380	02-1101.25	O-Ring	1	*8117	02-0903.38	Piston Diaphragm (DESMOP AN)	3
*1381	02-1101.27	O-Ring	6	8151	02-1202.63	Mounting Rail - Right Side	1
1382	02-1101.29	O-Ring	1	8152	02-1202.64	Mounting Rail - Left Side	1
1389	02-1101.41	O-Ring	12	**8181	02-6015.49	Piston & Rod Assembly (ZETA-85)	3
1398	02-1101.42	O-Ring	1	**8184	02-0002.C5	Crankshaft (ZETA-85)	1
1434	02-1101.D1	O-Ring	1	8185	02-6015.51	Piston / Rod Assembly	3
1490	02-1203.27	Oil Reservoir	1	9995	02-0508.09	Discharge Plate S.S.	1
1575	02-1205.07	Piston	3	9997	02-1400.00	Discharge Manifold Spacer S.S.	6
**1578	02-1205.18	Piston (ZETA-85)	3	9998	02-1400.01	Rail Spacer S.S.	4
1607	02-1206.22	Stud	3	9999	02-0508.10	Regulator Adapter S.S.	1
1700	02-6006.36	Valve Assembly	6				

\* Parts Included in Diaphragm Repair Kit - #02-8700.60.

\*\* Parts for ZETA-85.